



SCAN TO VIEW
OUR WEBSITE

*Our Service, Your Choice
Our People, Here for you*

TOPPO LIGHTING COMPANY LIMITED

- ④ Sales office
1601, Block B, West Gate central
Times Square, No.99 Longcheng Avenue,
Long gang district, Shenzhen, 518172, P.R.C
- ④ Factory
Bldg19, Zhongnan Hi-Tech Industrial Park,
Shuikou Street, Huicheng District, Huizhou,
516000, P.R.C
- ④ Contact
info@toppolighting.com
inquiry@toppolighting.com
www.toppolighting.com



PRODUCT CATALOGUE

ISSUE V30



PRODUCT CATALOGUE

ISSUE V30

*LED lighting
since 2009*



INDUSTRIAL
LIGHTING

COMMERCIAL
LIGHTING

OFFICE
LIGHTING

EDUCATIONAL
LIGHTING

Welcome to Toppo Lighting

.....a professional lighting original designer and quality defender since 2009

Toppo Lighting is one of the professional manufacturers which specialized in developing, producing and selling on LED lighting. The company was established in 2009. Under the development in these years, we have grown into a headquarters and divisional type of modern enterprise. The headquarters is located in Shenzhen and independent industrial park in Huizhou, with a total production area of more than 20,000 square meters.

As a worldwide LED Lighting manufacturer, our product range includes the industrial lighting, commercial lighting, office lighting, educational lighting, residential lighting and outdoor lighting. The product series include Linear lights, Panel lights, Ceiling lights, down lights, Highbay lights, Roadway lights, Post top and bollard lights, Gas station lights, Etc .

In order to keep us at the forefront of marketing, technology and product, we not only have the prominent team on sales and R&D. But also, we build professional laboratory. We can do various of testings which include: EMI/EMF testing , Surge testing, ESD testing, IES testing, Global lighting testing, Temperature recycle testing, Fire rate testing, IP tesing, Drop testing, Salt spray test, etc. It makes us obtained good reputation from the worldwide customers under the above prominent team and professional laboratory.

"Customer is the first, Quality is priority" is our business philosophy. In order to ensure high effective operation and management, we not only use the ISO9001:2015 quality system and ISO14001:2015 environmental system as the basic management system. And also, we use the modern IT technology system to guarantee the operation of each procedures. The IT system includes the below modules: HR/OA/CRM/PLM/ERP/SRM/WMS/MESS/AC. The management system and IT platform make us achieve an excellent benefits from above each module. On the base of the above management system, we use the modern automatic product and aging testing machine on the production to insure the quality and delivery to customers. We have several numbers of automatic production line, aging testing line and SMT workshop. It makes our monthly production capacity achieve more than 300,000pcs.

Our products are worldwide popular. All of the products have got the various of certifications, such as: UL/ETL/FCC/DLC/TUV-GS/TUV-CE/ SAA/UKCA/ROHS/CB, etc. Under the growing on these years, Our company also obtained various of license from the government, such as: "HI-TECH" enterprise, "S-R-D-I" enterprise, "china famous brand" enterprise, Etc .

"Character, Quality, Grade, Brand" as the core values of Toppo lighting, we always keep the "Talents are the first" concept to build our team. We always adhere to the core cultural concept of "organization for people, process for work, performance for value" and strive to build the company into a fertile land of "happy work, happy live" for all staff, so as to provide more opportunities for all staff's personal career growth and life goals.

We will always adhere " Saving energy as we can, Brighten the word as possible" corporate vision, To design and produce high quality led light to bright your future modern life.



"Customer is the first, Quality is priority" is our business philosophy. In order to ensure high effective operation and management, we not only use the ISO9001:2015 quality system and ISO14001:2015 environmental system as the basic management system. And also, we use the modern IT technology system to guarantee the operation of each procedures. The IT system includes the below modules: HR/OA/CRM/PLM/ERP/SRM/WMS/MESS/AC. The management system and IT platform make us achieve an excellent benefits from above each module. On the base of the above management system, we use the modern automatic product and aging testing machine on the production to insure the quality and delivery to customers. We have several numbers of automatic production line, aging testing line and SMT workshop. It makes our monthly production capacity achieve more than 300,000pcs.

Growing History

2009-2011

- Established in 2009 at ShenZhen, Finished product and marketing strategy
- 1st factory got the T8 LED tube design patent
- 1st factory got the international certificate on TUV / VDE / ETL / FCC of T8 LED tube
- Built ISO9001:2008/ISO14001:2008 management system
- 1st relocation in Mar.2011, Expanded more than 6,000 square meters

2012-2014

- Built automatic assembly and aging line, Dust-free workshop
- Obtained the license of national HI-TECH and famous brand enterprise
- Built ERP management system to improve internal operation efficiency
- Built the R&D laboratory, Improved the product development system
- Established distributors in EU and USA market, Improved marketing segment

2015-2017

- Design the LED linear light, Obtained international design patent of LED Linear Light
- Built automatic production and aging line of linear light, Linear light became the main product
- 2nd relocation in Mar. 2017, Expanded more than 10,000 square meters
- Upgraded R&D laboratory, Improved capacity and efficiency of product development
- Upgraded ISO system into ISO9001:2015 and ISO14001:2015

2018-2020

- Completed product segmentation, Focus on commercial and industrial lighting as main range
- Upgraded workshop and equipment, Increased production value into ¥200M/year
- Recommend third-party professional team, Improved the HR and internal operation system
- Recommend third-party professional team, Built internal performance appraisal system
- Built hardware dept, Improved hardware materials supply chain system

2021-2023

- Built an operational organization, Set up R&D centre, Marketing centre, Operation centre, Management centre
- Improved the strategic procedure, talents procedure and operation procedure, Set up the philosophy of organization and process management system
- Built digital management system, including HR/ OA /PLB /MRP /SRM/WMS/MESS system to realize information interconnection and improve operation efficiency
- Purchased more than 15,000 square meters independent plants, Completed the construction and decoration of the plants

2023-

- 3rd relocation to HuZhou plant in May. 2023, a modern factory with more than RMB 500 million production value has been completed


拓普照明 (惠州) 有限公司
TOPPO LIGHTING (HUIZHOU) COMPANY LIMITED

中南高科电子信息创新园

Value System

1 **Morality**
as the basic

2 **Quality**
as the life

3 **Customer**
as the center

4 **Innovation**
as the source

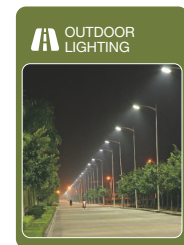
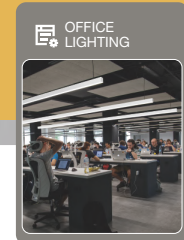
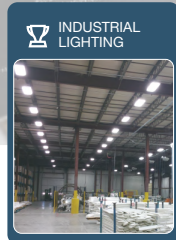
5 **Result**
as the guide

6 **Performance**
as the value



HIGH TECH ENTERPRISE

We have got the high-tech enterprise license for many years. We get product patent licenses every year. At the same time, we cooperate with some universities to develop the new products.



LED lighting since 2009

WE FOCUS ON

Main product

WHY

TOPPO LIGHTING

PROFESSIONAL LIGHTING
ORIGINAL DESIGNER
QUALITY DEFENDER
SINCE 2009

*Our Service, Your Choice
Our People , Here for you*

"Character, Quality, Grade, Brand" as the core values of Toppo lighting, we always keep the "Talents are the first" concept to build our team. We always adhere to the core cultural concept of "organization for people, process for work, performance for value" and strive to build the company into a fertile land of "happy work, happy live" for all staff, so as to provide more opportunities for all staff's personal career growth and life goals.

We will always adhere "Saving energy as we can, Brighten the word as possible" corporate vision. To design and produce high quality led light to bright your future modern life.



FACTORY TOUR



SHOW ROOM

"Customer is the first, Quality is priority" is our business philosophy. In order to ensure high effective operation and management, we not only use the ISO9001:2015 quality system and ISO14001:2015 environmental system as the basic management system. And also, we use the modern IT technology system to guarantee the operation of each procedures. The IT system include the below modules: HR/OA/CRM/PLM/ERP/SRM/WMS/MESS/AG. The management system and IT platform make us to achieve an excellent benefits on above each module. On the base of the above management system, we use the modern automatic product and ageing testing machine on the production to insure the quality and delivery to customers. We have several numbers of automatic production line, ageing testing line and SMT workshop. It makes our monthly production capacity achieve more than 300,000pcs.

2023 NEW PLANT



Low Glare Batten

>Toppo low glare batten is a complete LED lighting solution to replace the traditional light fixtures with UGR data . The battens are more and more popular nowadays ,Because it is more decorative and modern , While it also maintains more higher lumen Efficiency . It is not only can be reached more than 140 LM/W, but also it can be reached the UGR<19 in the office and education applications .

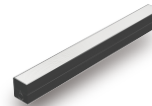
> The low glare batten used the aluminum and steel case as the main heating sink, and also use the bright view film as the diffuser to reach the UGR Data . The professional design make the low glare batten were very popular and hot selling.

>Toppo LED Batten/Linear light can be connected through the end or rear knock-outs in the end and rear of the unit, allowed end to end Continuous installation.

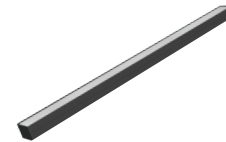
> The professional case style on the Batten/Linear light, simple opening design for easy installation make the client more interest in Toppo products.



Categories



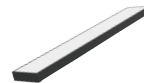
Weston Batten
BT100 | 55mm



Upton Batten
BT110 | 80mm



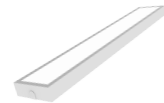
Kingston Batten
BT120 | 120mm



Hilton Batten
BT130 | 150mm



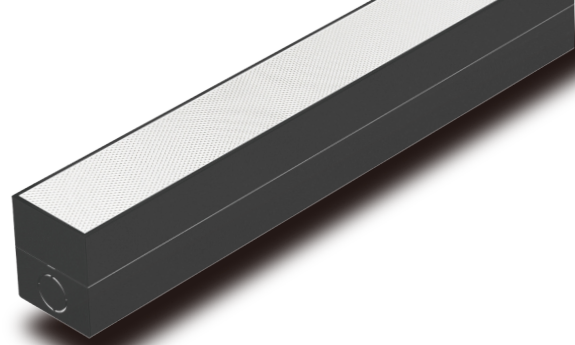
Kaston Batten
BT140 | 200mm



Sutton Batten
BT160 | 200mm

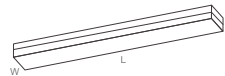


Weston Batten



Weston Batten

BT100 | 55mm



Weston is 55mm low glare linear which were widely used in the office /commercial / industrial / education applications. Aluminum case is a excellent heating sink, the high technology SMD2835 provide a more higher lumen output.

► Features

- > Low glare UGR<22
- > End or rear cable entry
- > Single or multiple link
- > 5 years warranty

► Data Sheet

Order Code	Rated Power	Lumen	LM/W	Flicker Free	Dimension (mm)	GW/CTN	QTY/CTN
BT100-02W-KN1-10F01-00	10W	typ.1200	typ.120	Y	L605 X W55 X H63.5	6.0kg	8pcs
BT100-04W-KN1-17F01-00	17W	typ.2040	typ.120	Y	L1205 X W55 X H63.5	11.5kg	8pcs
BT100-04W-KN1-34F01-00	34W	typ.4080	typ.120	Y	L1205 X W55 X H63.5	11.5kg	8pcs
BT100-05W-KN1-28F01-00	28W	typ.2640	typ.120	Y	L1505 X W55 X H63.5	14.5kg	8pcs
BT100-05W-KN1-40F01-00	40W	typ.4800	typ.120	Y	L1505 X W55 X H63.5	14.5kg	8pcs
BT100-06W-KN1-31F01-00	31W	typ.3720	typ.120	Y	L1805 X W55 X H63.5	17.0kg	8pcs
BT100-06W-KN1-62F01-00	62W	typ.7440	typ.120	Y	L1805 X W55 X H63.5	17.0kg	8pcs



Finish _____



► CCT



► Function

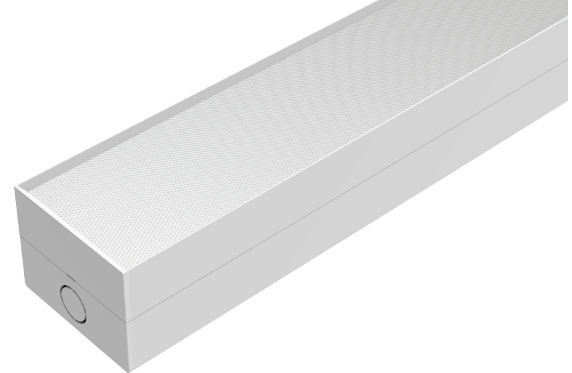


► Electrical Parameters



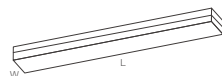
► Photometric Parameters





Upton Batten

BT110 | 80mm



Upton Batten is 80mm low glare linear which were widely used on the office / commercial / industrial / education applications. Aluminum case is an excellent heating sink, the high technology SMD2835 provide a more higher lumen output.

Features

- > Low glare UGR<19
- > End or rear cable entry
- > Single or multiple link
- > 5 years warranty

Data Sheet

Order Code	Rated Power	Lumen	LM/W	Flicker Free	Dimension (mm)	GW/CTN	QTY/CTN
BT110-02W-KN1-10F01-00	10W	typ.1200	typ.120	Y	L600 X W80 X H63.5	7.0kg	6pcs
BT110-04W-KN1-17F01-00	17W	typ.2040	typ.120	Y	L1200 X W80 X H63.5	12.0kg	6pcs
BT110-04W-KN1-34F01-00	34W	typ.4080	typ.120	Y	L1200 X W80 X H63.5	12.0kg	6pcs
BT110-05W-KN1-23F01-00	22W	typ.2640	typ.120	Y	L1500 X W80 X H63.5	14.0kg	6pcs
BT110-05W-KN1-40F01-00	40W	typ.4800	typ.120	Y	L1500 X W80 X H63.5	14.0kg	6pcs
BT110-06W-KN1-27F01-00	27W	typ.3240	typ.120	Y	L1800 X W80 X H63.5	18.0kg	6pcs
BT110-06W-KN1-50F01-00	50W	typ.6000	typ.120	Y	L1800 X W80 X H63.5	18.0kg	6pcs

- ▶ **CCT**
 - Single Color
 - Tri-color
- ▶ **Function**
 - 0-10V dim
 - 0-10V dim
 - DALI
 - RF
 - IR
 - RF
 - RF
- ▶ **Electrical Parameters**
 - AC 200-240V
 - PF 10.95
 - THD <15%
 - Flicker Free
- ▶ **Photometric Parameters**
 - 120 LM/W
 - 140 LM/W
 - CR>80 SDCM <5
 - UGR <19
 - LM79 TM-21

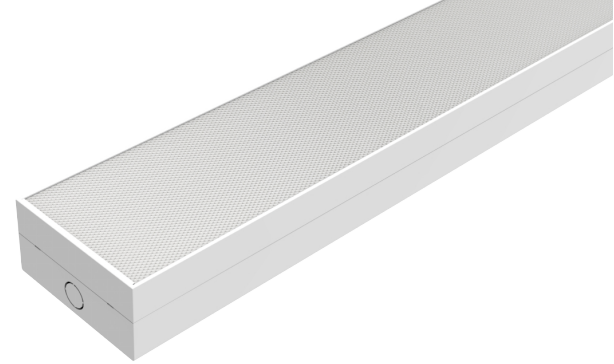
Upton Batten



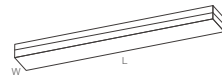
Finish _____



Kingston Batten



Kingston Batten BT120 | 120mm



Kingston batten is a 120mm low glare batten with UGR<19. It was widely used on the office / commercial / industrial / education applications. Aluminum case is a excellent heating sink, the high technology SMD2835 provide a more higher lumen output.

Features

- > Low glare UGR<19
- > End or rear cable entry
- > Single or multiple link
- > 5 years warranty

Data Sheet

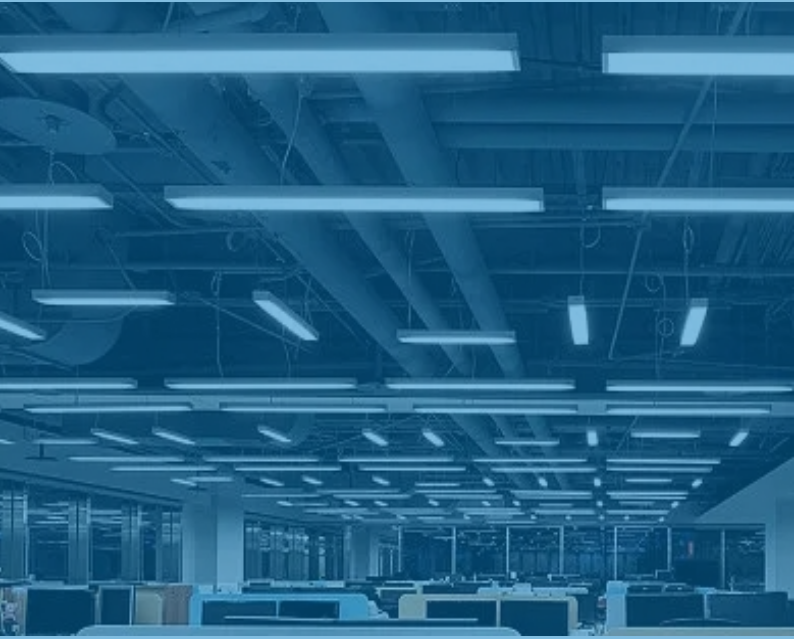
Order Code	Rated Power	Lumen	LMW	Flicker Free	Dimension (mm)	GW/CTN	QTY/CTN
BT120-02W-KN1-10F01-00	10W	typ.1200	typ.120	Y	L600 X W120 X H63.5	7.0kg	4pcs
BT120-04W-KN1-17F01-00	17W	typ.2040	typ.120	Y	L1200 X W120 X H63.5	10.5kg	4pcs
BT120-04W-KN1-34F01-00	34W	typ.4080	typ.120	Y	L1200 X W120 X H63.5	10.5kg	4pcs
BT120-04W-KN1-22F01-00	22W	typ.2640	typ.120	Y	L1500 X W120 X H63.5	13.0kg	4pcs
BT120-05W-KN1-40F01-00	40W	typ.4800	typ.120	Y	L1500 X W120 X H63.5	13.0kg	4pcs
BT120-06W-KN1-27F01-00	27W	typ.3240	typ.120	Y	L1800 X W120 X H63.5	15.5kg	4pcs
BT120-06W-KN1-50F01-00	50W	typ.6000	typ.120	Y	L1800 X W120 X H63.5	15.5kg	4pcs



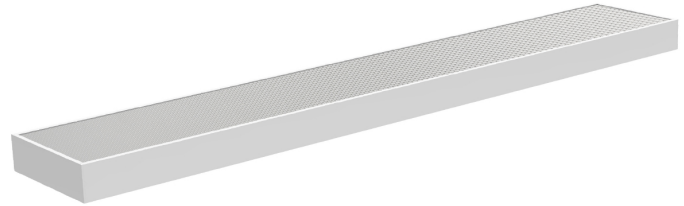
Finish _____



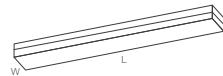
- ▶ CCT Single Color Tri-color
- ▶ Function DALI Zigbee
- ▶ Electrical Parameters AC 200-240V PF >0.95 THD <15% Flicker Free
- ▶ Photometric Parameters 120 LMW 140 LMW CRI>=80 SDCM <=5 UGR <19 LM79 TM-21



Hilton Batten



Hilton Batten BT130 | 150mm



HiltonBatten is a 150mm low glare linear which were widely used on the office /commercial / industrial / education applications. Aluminum case is a excellent heating sink, the high technology SMD2835 provide a more higher lumen output.

► Features

- > Low glare UGR<19
- > End or rear cable entry
- > Single or multiple link
- > 5 years warranty

► Data Sheet

Order Code	Rated Power	Lumen	LM/W	Flicker Free	Dimension (mm)	GW/CTN	QTY/CTN
BT130-04W-KN1-25F01-00	25W	typ.3100	typ.125	Y	L1200 X W150 X H64	18.5kg	3pcs
BT130-04W-KN1-40F01-00	40W	typ.5000	typ.125	Y	L1200 X W150 X H64	18.5kg	3pcs
BT130-05W-KN1-45F01-00	45W	typ.5600	typ.125	Y	L1500 X W150 X H64	22.0kg	3pcs
BT130-06W-KN1-60F01-00	60W	typ.7500	typ.125	Y	L1500 X W150 X H64	22.0kg	3pcs

- CCT
- Function
- Electrical Parameters
- Photometric Parameters

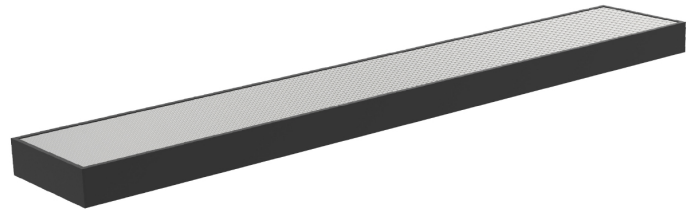


Finish _____

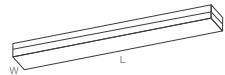




Kaston Batten



Kaston Batten BT140 | 200mm



► Features

- > Low glare UGR<19
- > End or rear cable entry
- > Single or multiple link
- > 5 years warranty

► Data Sheet

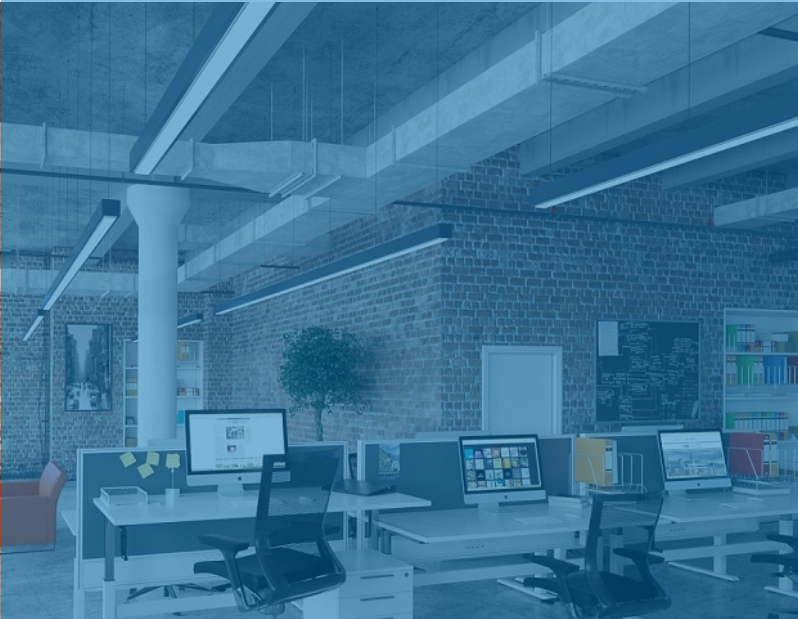
Order Code	Rated Power	Lumen	LM/W	Flicker Free	Dimension (mm)	GW/CTN	QTY/CTN
BT140-04W-KN1-25F01-00	25W	typ.3100	typ.125	Y	L1200 X W200 X H64	18.5kg	3pcs
BT140-04W-KN1-40F01-00	40W	typ.5000	typ.125	Y	L1200 X W200 X H64	18.5kg	3pcs
BT140-05W-KN1-45F01-00	45W	typ.5600	typ.125	Y	L1500 X W200 X H64	22.0kg	3pcs
BT140-05W-KN1-60F01-00	60W	typ.7500	typ.125	Y	L1500 X W200 X H64	22.0kg	3pcs



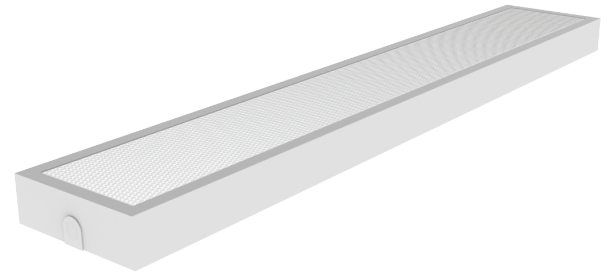
Finish _____



- CCT
 - Single Color
 - Tri-color
- Function
 - ON/OFF
 - 0-10V
 - DALI
 - RF
 - IR
 - 485
 - KNX
- Electrical Parameters
 - AC 200-240V
 - PF >0.95
 - THD <15%
 - Flicker Free
- Photometric Parameters
 - 120 LMW
 - 140 LMW
 - CR>80
 - SDCM <5
 - UGR <19
 - LM79 TM-21



Sutton Batten



Sutton Batten BT160 | 200mm



Sutton batten is a 200mm steel low glare linear with various of functions. The insert inner unit makes the sutton batten easy on the installation and replacement. Sutton batten were widely used on the commercial / industrial / office and campus applications

► Features

- > Low glare UGR<19
- > End or rear cable entry
- > Single or multiple link
- > 5 years warranty

► Data Sheet

Order Code	Rated Power	Lumen	LMW	Flicker Free	Dimension (mm)	GW/CTN	QTY/CTN
BT160-04W-PN1-40F01-00	40W	typ.5600	typ.140	Y	L1170X W170 X H30	22.0kg	4pcs
BT160-05W-PN1-60F01-00	60W	typ.8400	typ.140	Y	L1470 X W170 X H30	25.0kg	4pcs

- CCT
 - Single Color: 3000K, 4000K, 5000K
 - Tri-color: 2700K, 3000K, 3500K
- Function
 - 0-10V, DALI, ZigBee, DALI 2, DALI 2+
 - Emergency, Motion Sensor, Wireless, DALI 2
- Electrical Parameters
 - AC 220-240V, 50/60Hz
 - PF >0.95
 - THD <15%
 - Flicker Free
- Photometric Parameters
 - 120 LMW, 140 LMW
 - GR-80 SDCM <3
 - UGR <19
 - LM79 TM-21



Finish _____



Linear Light

>Toppo LED linear light is a complete LED solutions designed to replace fluorescent light fixtures of applications. The LED linears are more and more popular nowadays, because it is more decorative and modern, while it also maintains more higher lumen efficiency .

>Toppo designed various of different style linear for the different applications , The marco linear not only can be multiple link by the L /R / X connector, but also with the different lighting reflector .

>Toppo LED linear light get a very good reputation from the worldwide customer , They were very popular used on the office lighting, commercial lighting, industrial lighting,etc .



Marco Linear

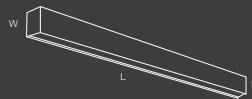
Finish



SAA CE RoHS UKCA

Marco Linear

LL500



Marco linear is a linkable designed LED lighting. It has the different lighting options, installation options and different connecting options, and the maximum link length has no limited. The above various of functions make the marco linear very modern and popular on the office lighting, commercial lighting, retail lighting etc.

► Features

- > Own patent design
- > Multiple link without limited
- > Various of lighting / Installation / connection options
- > CCT and wattage adjustable
- > DALI / Bluetooth / WIFI control
- > 5 years warranty

► Data Sheet

Order Code	Rated Power	Lumen	LM/W	Flicker Free	Dimension (mm)	GW/CTN	QTY/CTN
LL500-04W-KNT1-36F01-00	36W	typ.4350	typ.125	Y	L1200 X W55 X H80	12.5kg	5pcs
LL501-04W-KNT1-36F01-00	36W	typ.4350	typ.125	Y	L1200 X W55 X H80	12.5kg	5pcs

► CCT



► Function



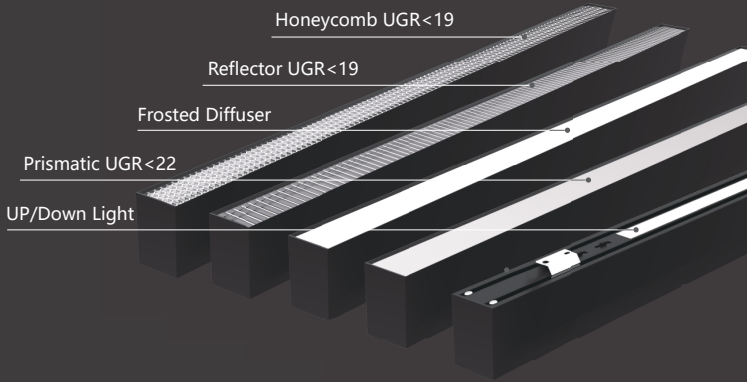
► Electrical Parameters



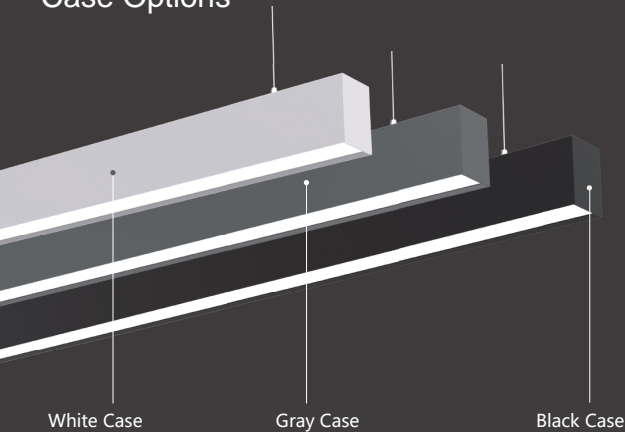
► Photometric Parameters



Lighting Options



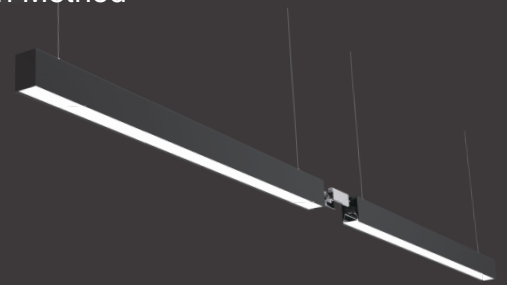
Case Options



Installation Method



Connection Method



Straight Connector



L Connector



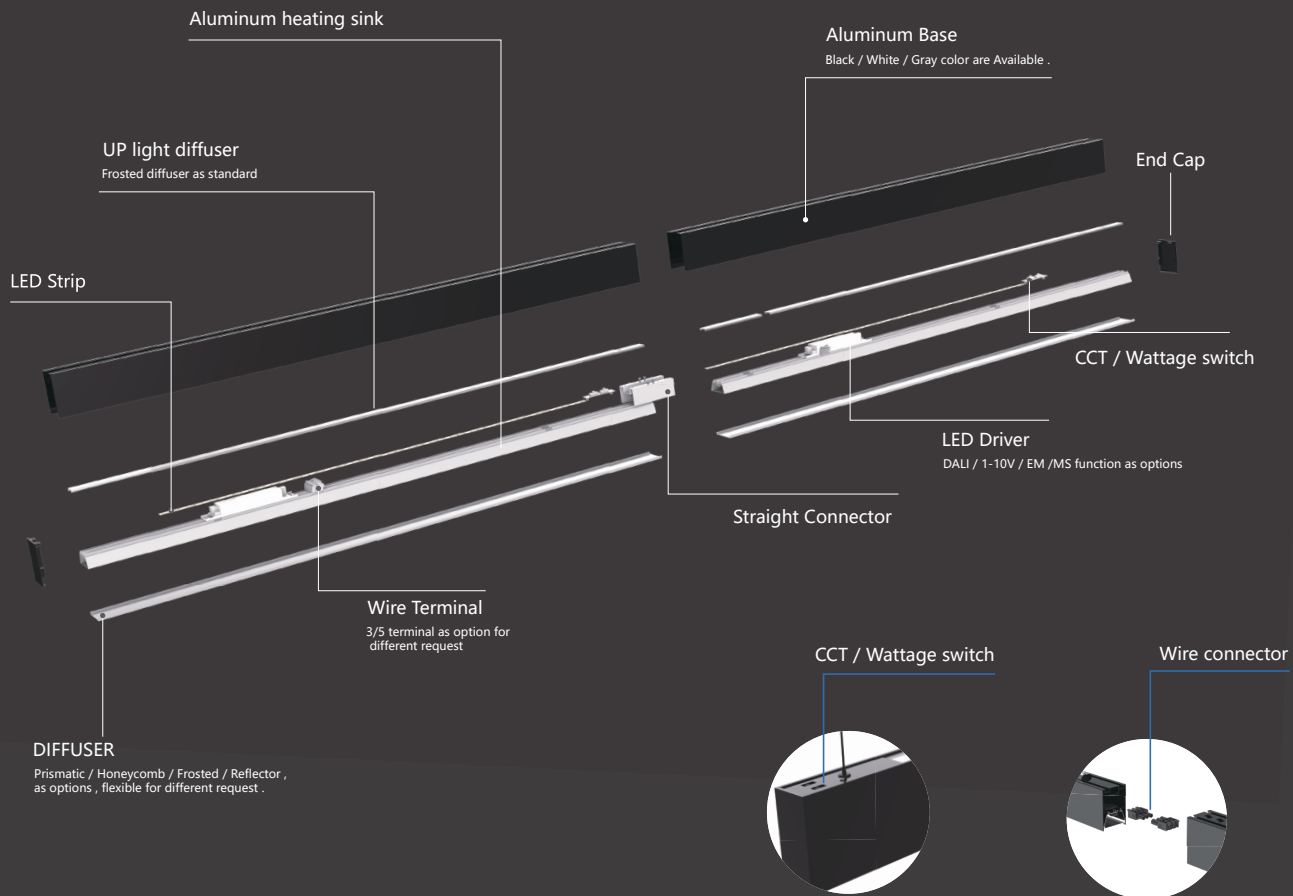
T Connector



X Connector

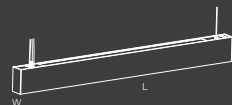
Linear Light

Design Profile



Polo Suspend Linear

Polo Suspend Linear LL400



Polo suspend linear is a UP/down linear lighting which has various of function on the junction box on the ceiling. Direct/indirect lighting combination, CCT adjustable, emergency and sensor function. Application for resident, commercial, office, educational, architectural, decorative.

Features

- > Separate control of the direct and indirect light.
- > 120cm 36W Down+6W Up, 150cm 50W Down+6W Up
- > Constructed by Aluminum for heating dispatching
- > 3 steps switch for Tri-color option
- > The driver, EM kits, Sensor is built-in the junction box
- > Easy Installation

- ▶ CCT Single Color Tri-color
- ▶ Function
 - Direct/Indirect
 - CCT adjustable
 - Emergency
 - Motion sensor
 - Sensor
- ▶ Electrical Parameters
 - AC 200-240V
 - PF >0.95
 - THD <15%
 - Flicker Free
- ▶ Photometric Parameters
 - 105 LMW
 - CRI>80 CRI>90
 - UGR <22
 - LM79 TM-21
 - ERP2.0
- ▶ Finish White Gray Black

▶ Data Sheet

Order Code	Rated Power	Lumen	LMW	Flicker Free	Dimension (mm)	GW/CTN	QTY/CTN
LL400-04W-SN1-36F01-00	36W	typ.3780	typ.105	Y	L1122 X W40 X H100	15.7kg	5pcs
LL400-04W-SN1-50F01-00	50W	typ.5250	typ.105	Y	L1122 X W40 X H100	15.7kg	5pcs
LL400-05W-SN1-50F01-00	50W	typ.5250	typ.105	Y	L1422 X W40 X H100	19.7kg	5pcs



Product Video

Design Profile



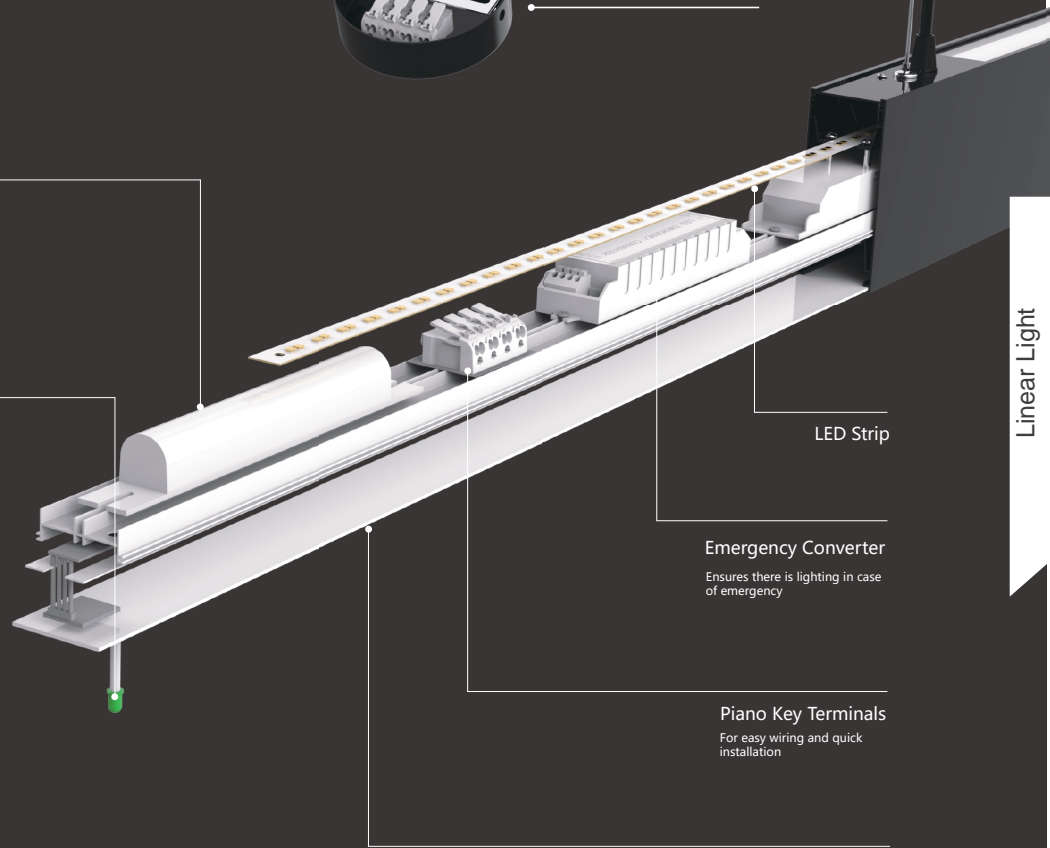
Push Fit Terminals
Providing hassle free and quick installations

LiFePO4 -IRON BATTERIES
-3 hours Emergency Operation

Emergency Indicator

A visible indicator to highlight the lights battery back up status.

End Cap



LED Strip

Emergency Converter

Ensures there is lighting in case of emergency

Piano Key Terminals

For easy wiring and quick installation

Gear Tray

Linear Light

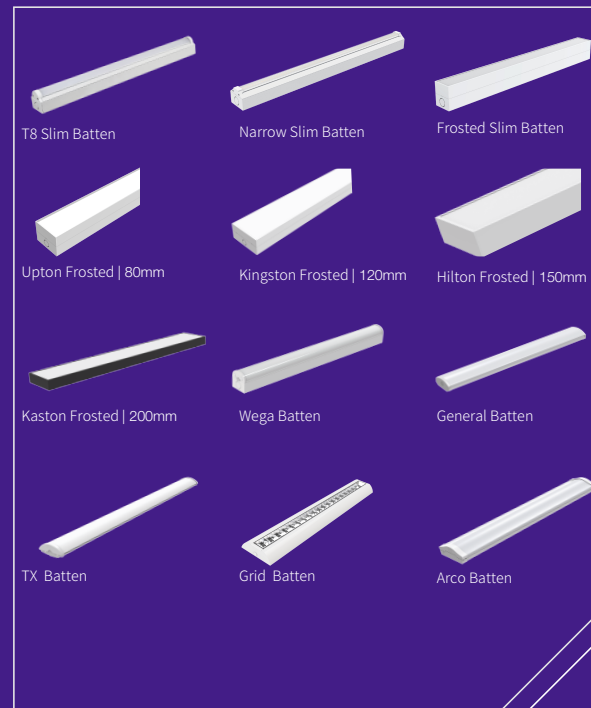
Batten Light

>Toppo LED Batten light is a complete LED solutions designed to replace fluorescent light fixtures of applications. The LED Battens are more and more popular nowadays, because it is more decorative and modern, while it also maintains more higher lumen efficiency up to 160LM/W meet the different applications of customers, such as offices, shopping malls, supermarkets, corridors, villas, gyms, rooms, etc.

>Toppo LED Batten/Linear light can be connected through the end or rear knock-outs in the end and rear of the unit, allowed end to end continuous installation.

> The professional case style on the Batten/Linear light, simple opening design for easy installation make the client and more interest in Toppo products.

Categories





Slim Batten



T8 Slim Batten

BT200



The T8 slim batten have super simple construction and superior capability, with milky, PC diffuser achieves anti-glare and high light transmittance. It is high efficient product with quite large potential market. Integrated 3CCTs to provide flexibility to customer. 4 standard sizes are replacement for T8/T5 fluorescent fitting perfectly.

► Features

- > Patent design for T8 fluorescent fitting
- > End or rear cable entry
- > Multiple Link through end rear
- > Easy installation
- > 5 years warranty

► Data Sheet

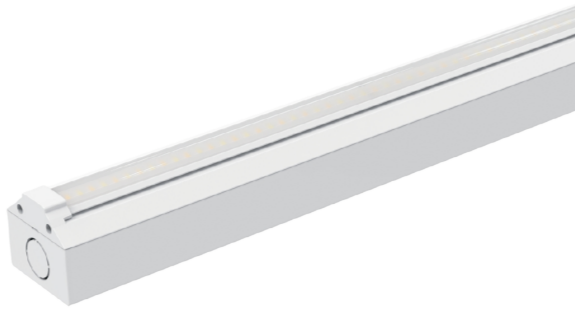
Order Code	Rated Power	Lumen	LM/W	Flicker Free	Dimension (mm)	GW/CTN	QTY/CTN
BT200-02W-DN1-10F01-00	10W	typ.1600	typ.160	Y	L600 X W55 X H58	6.4kg	10pcs
BT200-04W-DN1-17F01-00	17W	typ.2720	typ.160	Y	L1200 X W55 X H58	11.3kg	10pcs
BT200-04W-DN1-32F01-00	32W	typ.5120	typ.160	Y	L1200 X W55 X H58	11.3kg	10pcs
BT200-05W-DN1-28F01-00	28W	typ.4480	typ.160	Y	L1500 X W55 X H58	14.5kg	10pcs
BT200-05W-DN1-56F01-00	56W	typ.8960	typ.160	Y	L1500 X W55 X H58	14.5kg	10pcs
BT200-06W-DN1-32F01-00	32W	typ.5120	typ.160	Y	L1800 X W55 X H58	17.8kg	10pcs
BT200-06W-DN1-62F01-00	62W	typ.9920	typ.160	Y	L1800 X W55 X H58	17.8kg	10pcs



Finish

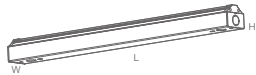


- CCT Single Color Tri-color
- Function
- Electrical Parameters
- Photometric Parameters



Narrow Slim Batten

BT202



Narrow slim batten offers a homogeneous light output and has a slim housing, 80 degree beam angle focus on the light area, widely used warehouse, corridor, office, factories, supermarkets, etc. It offers ultra-high efficiency up to 160lm/w utilising latest LED chip technology.

Features

- > Own design for traditional fluorescent batten
- > End or rear cable entry
- > Multiple Link through end hole
- > Easy installation
- > 5 years warranty

Data Sheet

Order Code	Rated Power	Lumen	LMW	Flicker Free	Dimension (mm)	GW/CTN	QTY/CTN
BT202-04W-DN1-17F01-00	17W	typ.2720	typ.160	Y	L1200 X W55 X H50	11.3kg	10pcs
BT202-04W-DN1-32F01-00	32W	typ.5120	typ.160	Y	L1200 X W55 X H50	11.3kg	10pcs
BT202-05W-DN1-28F01-00	28W	typ.4480	typ.160	Y	L1500 X W55 X H50	14.5kg	10pcs
BT202-05W-DN1-56F01-00	56W	typ.8960	typ.160	Y	L1500 X W55 X H50	14.5kg	10pcs
BT202-06W-DN1-32F01-00	32W	typ.5120	typ.160	Y	L1800 X W55 X H50	17.8kg	10pcs
BT202-06W-DN1-62F01-00	62W	typ.9920	typ.160	Y	L1800 X W55 X H50	17.8kg	10pcs
BT202-06W-DN1-72F01-00	72W	typ.11520	typ.160	Y	L1800 X W55 X H50	17.8kg	10pcs



▶ CCT Single Color 4000K 5000K 6000K Tri-color

▶ Function DALI, ZigBee, RF, Emergency

Electrical Parameters

AC 200-240V, Earth, PF >0.95, THD <15%, Flicker Free

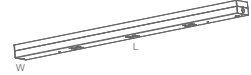
Photometric Parameters

120 LMW, 140 LMW, 160 LMW, CR>80, SDCM <5, LM79, TM-21, ERP2.0



Frosted Slim Batten

BT203



Frosted slim batten is a perfect replacement for traditional light. Aluminum housing provides an excellent thermal management. Opal PC diffuser provide high transparency. Excellent appearance is suitable for various high-end offices, hotel lobbies, conference rooms, classrooms.

Features

- > Own design for traditional fluorescent batten
- > End or rear cable entry
- > Multiple Link through end hole
- > Easy installation
- > 5 years warranty

Data Sheet

Order Code	Rated Power	Lumen	LMW	Flicker Free	Dimension (mm)	GW/CTN	QTY/CTN
BT203-02W-DN1-10F01-00	10W	typ.1600	typ.160	Y	L600 X W55 X H64	5.8kg	8pcs
BT203-04W-DN1-17F01-00	17W	typ.2720	typ.160	Y	L1200 X W55 X H64	11.5kg	8pcs
BT203-04W-DN1-32F01-00	32W	typ.5120	typ.160	Y	L1200 X W55 X H64	11.5kg	8pcs
BT203-05W-DN1-28F01-00	28W	typ.4480	typ.160	Y	L1500 X W55 X H64	14.5kg	8pcs
BT203-05W-DN1-56F01-00	56W	typ.8960	typ.160	Y	L1500 X W55 X H64	14.5kg	8pcs
BT203-06W-DN1-32F01-00	32W	typ.5120	typ.160	Y	L1800 X W55 X H64	17.0kg	8pcs
BT203-06W-DN1-62F01-00	62W	typ.9920	typ.160	Y	L1800 X W55 X H64	17.0kg	8pcs



▶ CCT Single Color 4000K 5000K 6000K Tri-color

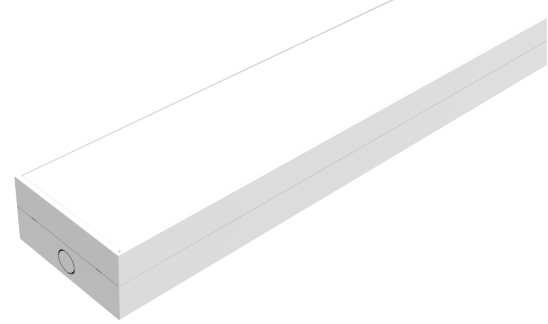
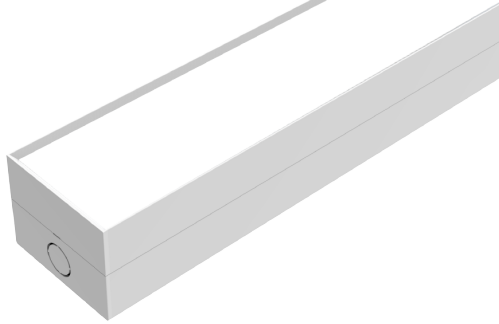
▶ Function DALI, ZigBee, RF, Emergency

Electrical Parameters

AC 200-240V, Earth, PF >0.95, THD <15%, Flicker Free

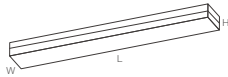
Photometric Parameters

120 LMW, 140 LMW, 160 LMW, CR>80, SDCM <5, LM79, TM-21, ERP2.0



Upton Frosted

BT210 | 80mm



Frosted batten is a perfect replacement for traditional light. Aluminum housing provides an excellent thermal management. Opal PS diffuser provide high transparency. Excellent appearance is suitable for various high-end offices, hotel lobbies, conference rooms, classrooms.

Features

- > Own design for traditional fluorescent batten
- > End or rear cable entry
- > Multiple Link through end hole
- > Easy installation
- > 5 years warranty

Data Sheet

Order Code	Rated Power	Lumen	LM/W	Flicker Free	Dimension (mm)	GW/CTN	QTY/CTN
BT210-02W-KN1-10F01-00	10W	typ.1200	typ.120	Y	L600 X W80 X H64	7.0kg	6pcs
BT210-04W-KN1-17F01-00	17W	typ.2040	typ.120	Y	L1200 X W80 X H64	12.0kg	6pcs
BT210-04W-KN1-34F01-00	34W	typ.4080	typ.120	Y	L1200 X W80 X H64	12.0kg	6pcs
BT210-05W-KN1-22F01-00	22W	typ.2640	typ.120	Y	L1500 X W80 X H64	14.0kg	6pcs
BT210-05W-KN1-40F01-00	40W	typ.4800	typ.120	Y	L1500 X W80 X H64	14.0kg	6pcs
BT210-06W-KN1-27F01-00	27W	typ.3240	typ.120	Y	L1800 X W80 X H64	18.0kg	6pcs
BT210-06W-KN1-50F01-00	50W	typ.6000	typ.120	Y	L1800 X W80 X H64	18.0kg	6pcs



▶ CCT Single Color 4000K 5000K 6000K Tri-color

▶ Function DALI, ZigBee, RF, Emergency

Electrical Parameters

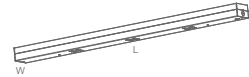
AC 200-240V, PF >0.95, THD <15%, Flicker Free

Photometric Parameters

120 LM/W, 140 LM/W, 160 LM/W, CRF>80 SDCM <5, LM79 TM-21, ERP2.0

Kingston Frosted

BT220 | 120mm



Frosted batten is a perfect replacement for traditional light. Aluminum housing provides an excellent thermal management. Opal PS diffuser provide high transparency. Excellent appearance is suitable for various high-end offices, hotel lobbies, conference rooms, classrooms.

Features

- > Own design for traditional fluorescent batten
- > End or rear cable entry
- > Multiple Link through end hole
- > Easy installation
- > 5 years warranty

Data Sheet

Order Code	Rated Power	Lumen	LM/W	Flicker Free	Dimension (mm)	GW/CTN	QTY/CTN
BT220-02W-KN1-10F01-00	10W	typ.1200	typ.120	Y	L600 X W120 X H64	7.0kg	4pcs
BT220-04W-KN1-17F01-00	17W	typ.2040	typ.120	Y	L1200 X W120 X H64	10.5kg	4pcs
BT220-04W-KN1-34F01-00	34W	typ.4080	typ.120	Y	L1200 X W120 X H64	10.5kg	4pcs
BT220-04W-KN1-22F01-00	22W	typ.2640	typ.120	Y	L1500 X W120 X H64	13.0kg	4pcs
BT220-05W-KN1-40F01-00	40W	typ.4800	typ.120	Y	L1500 X W120 X H64	13.0kg	4pcs
BT220-06W-KN1-27F01-00	27W	typ.3240	typ.120	Y	L1800 X W120 X H64	15.5kg	4pcs
BT220-06W-KN1-50F01-00	50W	typ.6000	typ.120	Y	L1800 X W120 X H64	15.5kg	4pcs



▶ CCT Single Color 4000K 5000K 6000K Tri-color

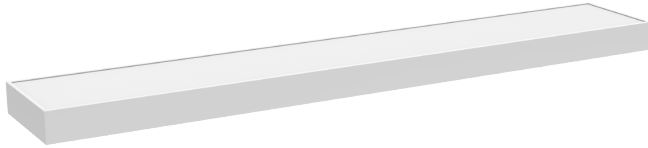
▶ Function DALI, ZigBee, RF, Emergency

Electrical Parameters

AC 200-240V, PF >0.95, THD <15%, Flicker Free

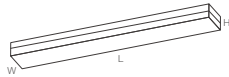
Photometric Parameters

120 LM/W, 140 LM/W, 160 LM/W, CRF>80 SDCM <5, LM79 TM-21, ERP2.0



Hilton Frosted

BT230 | 150mm



Frosted batten is a perfect replacement for traditional light. Aluminum housing provides an excellent thermal management. Opal PS diffuser provide high transparency. Excellent appearance is suitable for various high-end offices, hotel lobbies, conference rooms, classrooms.

Features

- > Own design for traditional fluorescent batten
- > End or rear cable entry
- > Multiple Link through end hole
- > Easy installation
- > 5 years warranty

Data Sheet

Order Code	Rated Power	Lumen	LMW	Flicker Free	Dimension (mm)	GW/CTN	QTY/CTN
BT230-02W-KN1-10F01-00	10W	typ.1200	typ.120	Y	L600 X W150 X H64	7.0kg	6pcs
BT230-04W-KN1-17F01-00	17W	typ.2040	typ.120	Y	L1200 XW150 X H64	12.0kg	6pcs
BT230-04W-KN1-34F01-00	34W	typ.4080	typ.120	Y	L1200 X W150 X H64	12.0kg	6pcs
BT230-05W-KN1-22F01-00	22W	typ.2640	typ.120	Y	L1500 X W150 X H64	14.0kg	6pcs
BT230-05W-KN1-40F01-00	40W	typ.4800	typ.120	Y	L1500 X W150 X H64	14.0kg	6pcs
BT230-06W-KN1-27F01-00	27W	typ.3240	typ.120	Y	L1800 X W150 X H64	18.0kg	6pcs
BT230-06W-KN1-50F01-00	50W	typ.6000	typ.120	Y	L1800 X W150 X H64	18.0kg	6pcs

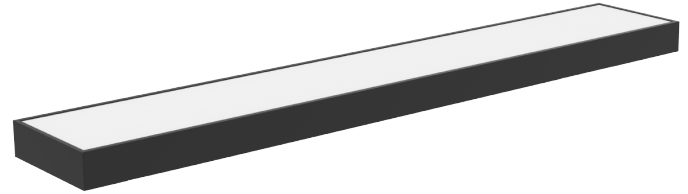


▶ CCT Single Color 4000K 5000K 6000K Tri-color

▶ Function

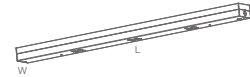
▶ Electrical Parameters

▶ Photometric Parameters



Kaston Frosted

BT240 | 200mm



Frosted batten is a perfect replacement for traditional light. Aluminum housing provides an excellent thermal management. Opal PS diffuser provide high transparency. Excellent appearance is suitable for various high-end offices, hotel lobbies, conference rooms, classrooms.

Features

- > Own design for traditional fluorescent batten
- > End or rear cable entry
- > Multiple Link through end hole
- > Easy installation
- > 5 years warranty

Data Sheet

Order Code	Rated Power	Lumen	LMW	Flicker Free	Dimension (mm)	GW/CTN	QTY/CTN
BT240-02W-KN1-10F01-00	10W	typ.1200	typ.120	Y	L600 X W200 X H64	7.0kg	4pcs
BT240-04W-KN1-17F01-00	17W	typ.2040	typ.120	Y	L1200 X W200 X H64	10.5kg	4pcs
BT240-04W-KN1-34F01-00	34W	typ.4080	typ.120	Y	L1200 X W200 X H64	10.5kg	4pcs
BT240-04W-KN1-22F01-00	22W	typ.2640	typ.120	Y	L1500 X W200 X H64	13.0kg	4pcs
BT240-05W-KN1-40F01-00	40W	typ.4800	typ.120	Y	L1500 X W200 X H64	13.0kg	4pcs
BT240-06W-KN1-27F01-00	27W	typ.3240	typ.120	Y	L1800 X W200 X H64	15.5kg	4pcs
BT240-06W-KN1-50F01-00	50W	typ.6000	typ.120	Y	L1800 X W200 X H64	15.5kg	4pcs



▶ CCT Single Color 4000K 5000K 6000K Tri-color

▶ Function

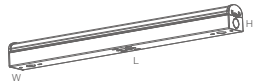
▶ Electrical Parameters

▶ Photometric Parameters



Wega Batten

BT330



Safety-lock-mechanism design for quick installation. Osram driver as standard and adopts SMD high lumen efficiency 160LM/W is good lighting solution. The iron lamp body provides excellent heat dissipation.

Features

- > High lumen efficiency – up to 160lm/w
- > Safety-lock-mechanism for a secure installation
- > Durable sheet-metal casing with end/rear cables entries
- > Milky PC cover with 85% transparency and 120° beam angle
- > Suitable for surface mounting or suspended installation
- > Perfect replacement for traditional T5/T8 fittings
- > OSRAM driver as standard
- > 5 year warranty

Data Sheet

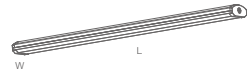
Order Code	Rated Power	Lumen	LMW	Flicker Free	Dimension (mm)	GW/CTN	QTY/CTN
BT330-02W-DN1-10F01-00	10W	typ.1600	typ.160	Y	L600 X W55 X H59	7.5kg	10pcs
BT330-04W-DN1-18F01-00	18W	typ.2980	typ.160	Y	L1200 X W55 X H59	12.4kg	10pcs
BT330-04W-DN1-35F01-00	35W	typ.5600	typ.160	Y	L1200 X W55 X H59	12.4kg	10pcs
BT330-05W-DN1-29F01-00	29W	typ.4640	typ.160	Y	L1500 X W55 X H59	14.5kg	10pcs
BT330-05W-DN1-55F01-00	55W	typ.8800	typ.160	Y	L1500 X W55 X H59	15.5kg	10pcs
BT330-06W-DN1-35F01-00	35W	typ.5600	typ.160	Y	L1800 X W55 X H59	18.8kg	10pcs
BT330-06W-DN1-55F01-00	55W	typ.8800	typ.160	Y	L1800 X W55 X H59	18.8kg	10pcs



- ▶ CCT: Single Color (3000K, 4000K, 5000K), Tri-color (2700K, 3000K, 3500K)
- ▶ Function: DALI, ZigBee, DALI, Emergency
- ▶ Electrical Parameters: AC (200-240V), Energy Star, PF >0.95, THD <15%, Flicker Free
- ▶ Photometric Parameters: 120 LMW, 140 LMW, 160 LMW, CR>80, SDCM <5, LM79 TM-21, ERP2.0

General Batten

BT310



General Batten adopts separated module design, has been improved to have a wider lighting emitting area. Color temperature and wattage both switchable. Mounting design: suspension/surface mounting

Features

- > Various of functions for options
- > High lumen output at 160LM/W
- > Easy installation
- > 5 years warranty

Data Sheet

Order Code	Rated Power	Lumen	LMW	Flicker Free	Dimension (mm)	GW/CTN	QTY/CTN
BT310-04W-DT1-17F01-00	17W	typ.2720	typ.160	Y	L1200 X W152 X H77	9.2kg	4pcs
BT310-04W-DT1-32F01-00	32W	typ.5120	typ.160	Y	L1200 X W152 X H77	9.2kg	4pcs
BT310-06W-DT1-25F01-00	25W	typ.4000	typ.160	Y	L1500 X W152 X H77	11.2kg	4pcs
BT310-06W-DT1-50F01-00	50W	typ.8000	typ.160	Y	L1500 X W152 X H77	11.2kg	4pcs

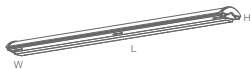


- ▶ CCT: Single Color (3000K, 4000K, 5000K), Tri-color (2700K, 3000K, 3500K)
- ▶ Function: DALI, ZigBee, DALI, Emergency
- ▶ Electrical Parameters: AC (200-240V), Energy Star, PF >0.95, THD <15%, Flicker Free
- ▶ Photometric Parameters: 120 LMW, 140 LMW, 160 LMW, CR>80, SDCM <5, LM79 TM-21, ERP2.0



TX Batten

BT320



TX Batten adopts unique module design to have a wide lighting emitting area, the semi-circular shape makes it emit a uniform light effect, bringing a high-level texture. Color temperature and wattage both switchable. Suspension/surface mounting designed for school lighting, office lighting applications, etc.

► Features

- > Various of functions for options
- > High lumen output at 160LM/W
- > Easy Installation
- > 5 years warranty

► Data Sheet

Order Code	Rated Power	Lumen	LM/W	Flicker Free	Dimension (mm)	GW/CTN	QTY/CTN
BT320-04W-DN1-20F01-00	20W	typ.3200	typ.160	Y	L1190 X W165 X H75	11.8kg	5pcs
BT320-04W-DN1-34 F01-00	34W	typ.5440	typ.160	Y	L1190 X W165 X H75	11.8kg	5pcs
BT320-05W-DN1-24F01-00	24W	typ.3840	typ.160	Y	L1470 X W165 X H75	14.0kg	5pcs
BT320-05W-DN1-40F01-00	40W	typ.6400	typ.160	Y	L1470 X W165 X H75	14.0kg	5pcs
BT320-06W-DN1-32F01-00	32W	typ.5120	typ.160	Y	L1800 X W165 X H75	17.7kg	5pcs
BT320-06W-DN1-50F01-00	50W	typ.8000	typ.160	Y	L1800 X W165 X H75	17.7kg	5pcs



► CCT Single Color Warm White Tri-color

► Function DALI ZigBee 485

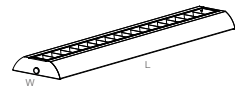
► Electrical Parameters AC 200-240V PF >0.95 THD <15% Flicker Free

► Photometric Parameters 120 LM/W 140 LM/W 160 LM/W CR>80 SDCM <5 LM79 TM-21 ERP2.0



Grid Batten

BT340



Grid batten use the special designed steel grid to make the similar traditional light
Grid batten

► Features

- > Various of functions for options
- > High lumen output at 160LM/W
- > Easy Installation
- > 5 years warranty

► Data Sheet

Order Code	Rated Power	Lumen	LM/W	Flicker Free	Dimension (mm)	GW/CTN	QTY/CTN
BT340-04W-FN1-35F01-00	21-35W	2150-4900	typ.140	Y	L1200 X W200 X H55	23.5kg	5pcs
BT340-04W-FN1-40F01-00	23-40W	3650-5600	typ.140	Y	L1500 X W200 X H55	23.5kg	5pcs



► CCT Single Color Warm White Tri-color

► Function DALI ZigBee 485

► Electrical Parameters AC 200-240V PF >0.95 THD <15% Flicker Free

► Photometric Parameters 120 LM/W 140 LM/W 160 LM/W CR>80 SDCM <5 LM79 TM-21 ERP2.0

Arco Batten

BT300



Arco batten is a extra wide body LED batten featuring an aesthetically pleasing low-glare design , The arco batten has a multiple function ,All of these special design make the arco battten is a best replacement for the traditional fluorescent college fitting .

The arco batten were widely use in offices, universities colleges, schools, hospitals.

Features

- > College Fitting / College Batten
- > 0.7mm steel case + 1.8mm TP(b) cover
- > Safety lock to prevent accidental opening
- > Various of functions for options
- > High lumen output at 160LM/W
- > Rotatable end cap for easy opening and installation
- > 5 years warranty

Polycarbonate Diffuser End Cap



Frosted Polycarbonate Diffuser

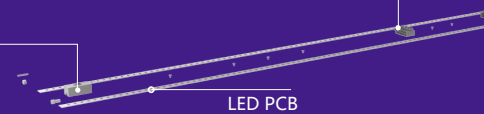


CCT Switch

With DIP switch



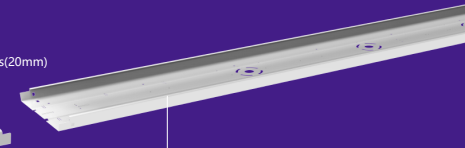
Wiring Terminals



LED PCB

Base End Cap

With conduit knockouts holes(20mm)

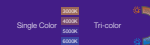


Steel Base with BESA

► Data Sheet

Order Code	Rated Power	Lumen	LM/W	Flicker Free	Dimension (mm)	GW/CTN	QTY/CTN
BT300-04W-DT1-17FD1-00	17W	typ.1600	typ.160	Y	L1200 X W215 X H77	17.5kg	5pcs
BT300-04W-DT1-32FD1-00	32W	typ.5120	typ.160	Y	L1200 X W215 X H77	17.5kg	5pcs
BT300-05W-DT1-25FD1-00	25W	typ.4000	typ.160	Y	L1500 X W215 X H77	21.6kg	5pcs
BT300-05W-DT1-50FD1-00	50W	typ.8000	typ.160	Y	L1500 X W215 X H77	21.6kg	5pcs
BT300-05W-DT1-60FD1-00	60W	typ.9600	typ.160	Y	L1500 X W215 X H77	21.6kg	5pcs

► CCT



► Electrical Parameters



► Function



► Photometric Parameters



Retro Flex Lighting Fitting

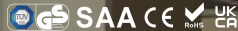
>Retro Flex light module is a own designed linear trunk system lighting module which can be used to replace various traditional lighting modules of different brands, such as Philips, Trilux, Zumtobel, Siteco, Ridi, and many more. Its flexible and self-centering clamp system allows this module to be installed on a wide variety of trunks.

>Retro Flex comes with its own set of pre-wired connections wires, making it completely independent from the trunk it is installed on. The WAGO connection terminal provides a quick and easy way to connect module after module. Both the 5-wire on/off version as well as the 7-wire dimming version, come with a 400V rated 3-phase line switcher which allows creating various installation scenarios.

>The driver not only has the wattage adjustable / Dimming function, But also have the CLO function after long time operation

> Retro flex light module include the PC cover and honeycomb version. The honeycomb version provides a perfectly homogeneous light distribution in high and low ceiling area.

>For situation where no pre-installed trunk system is available, we have our own trunk rail system to facilitate any need for a complete and flexible trunking system.



Finish



Categories



Retro Flex | Honeycomb

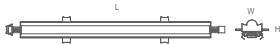


Retro Flex | PC



Retro Flex

- LL200 | Honeycomb
- LL201 | PC Cover
- LL202 | Lens 90 degree
- LL203 | Lens L/R 25 degree



Retro flex lighting module includes pre-wired PC cover (16LM/W) module and honeycomb (125LM/W) module. CLO function makes 7 years warranty, 25-75W adjustable makes stock easy to handle, Tri color suitable for different applications.

Features

- > Up to 16LM/W@12000LM > UGR<19 (honeycomb cover)
- > 400V Switcher for 3-phase AC
- > 5/7 pre-wired system with CLO function
- > Click-Slide system allows the module to be mounted on variety of trunks
- > Tool free installation at MAX 200M multiple link
- > 7 years warranty

Data Sheet

Order Code	Rated Power	Lumen	LMW	Flicker Free	Dimension (mm)	GW/CTN	QTY/CTN
LL200-05W-DT1-75F01-00	25-75W	typ.3500-10500	typ.140	Y	L1526 X W106 X H88	21.5kg	8pcs
LL201-05W-CT1-75F01-00	25-75W	typ.4000-12000	typ.160	Y	L1526 X W106 X H88	16.5kg	8pcs
LL202-05W-CT1-75F01-00	25-75W	typ.4000-12000	typ.160	Y	L1526 X W106 X H88	16.5kg	8pcs
LL203-05W-CT1-75F01-00	25-75W	typ.4000-12000	typ.160	Y	L1526 X W106 X H88	16.5kg	8pcs



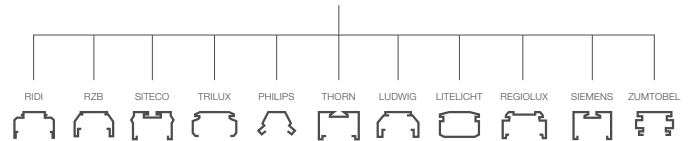
- ▶ CCT: Single Color, Tri-color
- ▶ Function: DALI, CLO, Click-Slide, Emergency
- ▶ Electrical Parameters: AC 100-277V, PF >0.95, THD <15%, Flicker Free
- ▶ Photometric Parameters: 120 LMW, 140 LMW, 160 LMW, CR30 SECM <5, LM79 TM 21, EPP2.0
- ▶ Wiring: 5 Wires, 7 Wires
- ▶ Finish: White, Gray, Black



Beam Angle : 30/60/90/LR25 Degree

▶ Traditional trunk complete with

Compatible with various brands traditional trunks
Width: Max 68mm, Min 42mm



▶ Trunk rail and Blank cover (Toppo Standard)

For the applications have no the traditional trunk or the new buildings . Toppo can provide the standard trunk for the retro flex lighting module . And also, We provide the blank cover for the additional balance length for the installation

▶ Trunk Rail

Product Picture	Order Code	Product Name	Dimension (mm)	Dimension drawing
	RM-TR05-00	5ft-150CMM/ Trunk Rail	L1527 X W64.5 X H50	
	RM-TR10-00	10ft-300CM/ Trunk Rail	L3027 X W64.5 X H50	

▶ Blank cover

Product Picture	Order Code	Product Name	Dimension (mm)	Dimension drawing
	RM-BC01-00	1ft-30CMM/Blank Cover	L327 X W64.5 X H37	
	RM-BC04-00	4ft-120CM/Blank Cover	L1227 X W64.5 X H37	
	RM-BC05-00	5ft-150CMM/Blank Cover	L1527 X W64.5 X H37	

Design Profile



Each universal module enable tool-free
7-level power regulation via DIP switch:
25W-35W-40W-45W-55W-65W-75W



The newly developed LED driver regulates
the luminous flux intelligently and
automatically. In this way is constant over
the entire service life Light level guaranteed
and economical operation secured.



The unique soft start technology reduces
high inrush currents and saves money, it
protects electrical components and thus
extends the operating time and service life



CCT Switch enables the selection
the desired color temperature
(3000 K - 4000 K - 5000 K) simply
select using the DIP switch.



▲L1 ▲L2 ▲L3

The 400V /3-phase AC switcher makes the Retro Flex
Module can be max 200 meters multiple linking

Tool-free phase selection, this saves you a rewiring
and thus valuable time.



Retro Flex Fitting

Trunk Linear System

Max 200 Meters Multiple Tool-free Installation

- > Trunk linear system is a own designed multiple link led linear light system, which provide the optimized lighting solution for industrial and commercial applications, Such as: Supermarket, Shopping malls, Offices, Conference rooms, factories, Warehouses, Car parks, Airports, Stations, etc
- > Trunk linear system comprises of trunk rail, lighting module and accessories, The pre-wired 5/7 wires trunk rail provide the AC power and control signals to light modules, The 5 different light module make the trunk linear system were widely used in the different application
- > Trunk linear system delivers a tool free installation which can be max 200 meters multiple link.
- > See the below pages for the detailed product information of the trunk linear system.



Categories



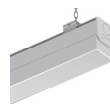
Start unit



Lens Module



Frosted Module



Gentle Module



Narrow Module



T8 Module



Finish



White



Gray



Black



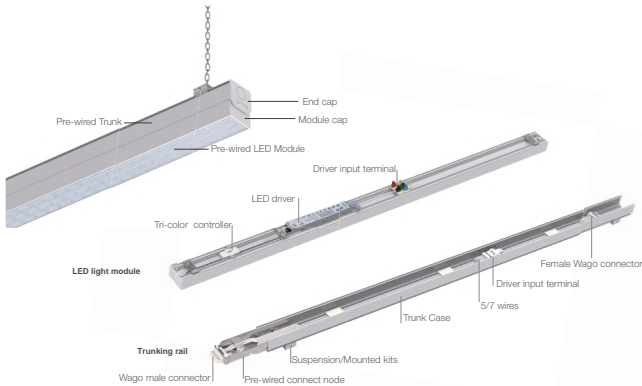
Trunk Linear LL100

Complete Trunk Linear System adopts separated light modules, trunk rail and mode connectors.

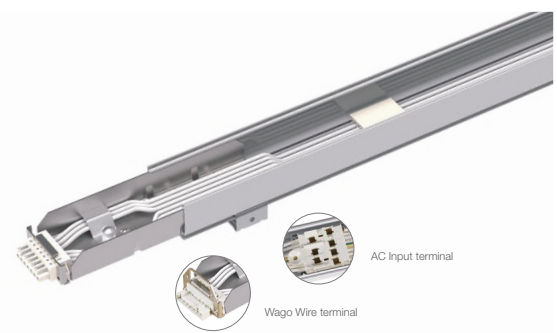
► Features

- > Pre wired 5/7 wires trunk rail
- > Various lighting module
- > Tool Free installation
- > Max 200 meters multiple link
- > 3-phase AC power source
- > Starting unit for one times AC power connect

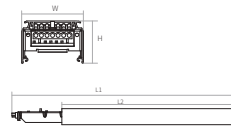
► Design Profile



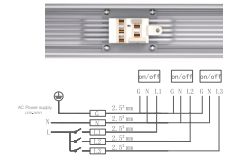
- CCT: Single Color, Tri-color
- Function: DALI, ZigBee, DALI, DALI, DALI, DALI
- Electrical Parameters: AC 200-240V, PF 103.95, THD <15%, Flicker Free
- Photometric Parameters: 130 LMW, 140 LMW, 160 LMW, CRI>80, SDCM <5, LM79 TM-21, ERP2.0
- Wiring: 5 Wires, 7 Wires
- Light Module: See below pages



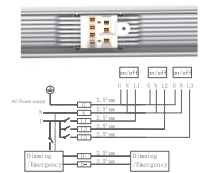
Trunk Linear Pre-wired trunk rail



► 5 Wires Diagram



► 7 Wires Diagram



The trunk rails are pre-wired sections. Which provide the AC power and control signals to modules. The trunk rail has 5/7 wires style which meet the different modules. The available length are 0.6m, 1.2m, 1.5m, 2.4m, 3.0m. The mode connectors with wired WAGO terminal on both sides of the trunk rail not only make the tool free installation but also make the installation directions.

► Trunk rail data sheet

Product name	Order Code	Wires	Suitable For	Dimension (mm)	QTY/CTN
0.6m trunk rail	TS-TN06-05-F1	5	3-phase operation + ON-OFF	L605 X W55 X H38	10pcs
	TS-TN06-07-F2	7	3-phase operation + ON-OFF + Dimming or EM	L605 X W55 X H38	10pcs
1.2m trunk rail	TS-TN12-07-F2	5	3-phase operation + ON-OFF	L1205 X W55 X H38	10pcs
	TS-TN12-05-F1	7	3-phase operation + ON-OFF + Dimming or EM	L1205 X W55 X H38	10pcs
2.4m trunk rail	TS-TN24-05-F1	5	3-phase operation + ON-OFF	L2410 X W55 X H38	10pcs
	TS-TN24-07-F2	7	3-phase operation + ON-OFF + Dimming or EM	L2410 X W55 X H38	10pcs
1.5m trunk rail	TS-TN15-05-F1	5	3-phase operation + ON-OFF	L1505 X W55 X H38	10pcs
	TS-TN15-07-F2	7	3-phase operation + ON-OFF + Dimming or EM	L1505 X W55 X H38	10pcs
3.0m trunk rail	TS-TN30-05-F1	5	3-phase operation + ON-OFF	L3010 X W55 X H38	10pcs
	TS-TN30-07-F2	7	3-phase operation + ON-OFF + Dimming or EM	L3010 X W55 X H38	10pcs

► Start unit

Order Code	Product name	Specification
TS-FM03-05-ST	5 wires Start unit	For 5 wires system
TS-FM03-07-ST	7 wires Start unit	For 7 wires system

► Lens Module (30°/60°/90°/LR25 Optional)

Order Code	Wattage	Lumen	LM/W	Flicker Free	Dimension (mm)	GW/CTN	QTY/CTN
LL101-12W-CN1-25F01-00	25W	typ.4000	typ.160	Y	L1205 X W55 X H60	13.0kg	10pcs
LL101-12W-CN1-50F01-00	50W	typ.8000	typ.160	Y	L1205 X W55 X H60	13.0kg	10pcs
LL101-15W-CN1-32F01-00	32W	typ.5100	typ.160	Y	L1505 X W55 X H60	16.0kg	10pcs
LL101-15W-CN1-64F01-00	64W	typ.10250	typ.160	Y	L1505 X W55 X H60	16.0kg	10pcs

► Frosted Module

Order Code	Wattage	Lumen	LM/W	Flicker Free	Dimension (mm)	GW/CTN	QTY/CTN
LL102-12W-PN1-25F01-00	25W	typ.3250	typ.130	Y	L1205 X W55 X H60	12.0kg	10pcs
LL102-12W-PN1-50F01-00	50W	typ.6500	typ.130	Y	L1205 X W55 X H60	12.0kg	10pcs
LL102-15W-PN1-32F01-00	32W	typ.4150	typ.130	Y	L1505 X W55 X H60	15.0kg	10pcs
LL102-15W-PN1-64F01-00	64W	typ.8300	typ.130	Y	L1505 X W55 X H60	15.0kg	10pcs

► Gentle Module (Low glare UGR<22)

Order Code	Wattage	Lumen	LM/W	Flicker Free	Dimension (mm)	GW/CTN	QTY/CTN
LL103-12W-KN1-25F01-00	25W	typ.3000	typ.120	Y	L1205 X W55 X H60	12.0kg	10pcs
LL103-12W-KN1-50F01-00	50W	typ.6000	typ.120	Y	L1205 X W55 X H60	12.0kg	10pcs
LL103-15W-KN1-32F01-00	32W	typ.3850	typ.120	Y	L1505 X W55 X H60	15.0kg	10pcs
LL103-15W-KN1-64F01-00	64W	typ.7650	typ.120	Y	L1505 X W55 X H60	15.0kg	10pcs

► Narrow Module (80°)

Order Code	Wattage	Lumen	LM/W	Flicker Free	Dimension (mm)	GW/CTN	QTY/CTN
LL104-12W-CN1-25F01-00	25W	typ.4000	typ.160	Y	L1205 X W55 X H46	12.0kg	10pcs
LL104-12W-CN1-50F01-00	50W	typ.8000	typ.160	Y	L1205 X W55 X H46	12.0kg	10pcs
LL104-15W-CN1-32F01-00	32W	typ.5100	typ.160	Y	L1505 X W55 X H46	15.0kg	10pcs
LL104-15W-CN1-64F01-00	64W	typ.10250	typ.160	Y	L1505 X W55 X H46	15.0kg	10pcs

► T8 Module (120°)

Order Code	Rated Power	Lumen	LM/W	Flicker Free	Dimension (mm)	GW/CTN	QTY/CTN
LL105-12W-CN1-25F01-00	25W	typ.4000	typ.160	Y	L1205 X W55 X H54	12.0kg	10pcs
LL105-12W-CN1-50F01-00	50W	typ.8000	typ.160	Y	L1205 X W55 X H54	12.0kg	10pcs
LL105-15W-CN1-32F01-00	32W	typ.5100	typ.160	Y	L1505 X W55 X H54	15.0kg	10pcs
LL105-15W-CN1-64F01-00	64W	typ.10250	typ.160	Y	L1505 X W55 X H54	15.0kg	10pcs



Trunk Linear

Pro-Line

Max 100 Meters Multiple Tool-free Installation

- > Pro-Line is a own designed multiple link led linear light system, adopts 5 different light modules: Weston UGR light module, Frosted light module, T8 Light module, Lens light module and Narrow light module, which provide the optimized lighting solution for industrial and commercial applications, such as: Supermarket, Shopping Malls, Offices, Factories, Warehouse, etc
- > Pro-Line Slim Batten delivers a tool free magnet installation which can be max 100 meters multiple link, 600mm/1200mm/1500mm/1800mm size as options.
- > Loop in and out, fast connector design for easier wire connection, easy installation and maintenance, widely installation way: surface mounted/ suspended/ magnet installation.



Finish _____



Categories



Lens Module 30 degree
LL300



Lens Module 60 degree
LL301



Lens Module 90 degree
LL302



Lens Module LR25
LL303



Frosted Module
LL304



Gentle Module
LL305



Narrow Module
LL306

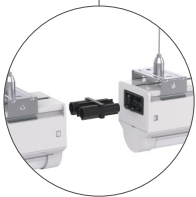


T8 Module
LL307

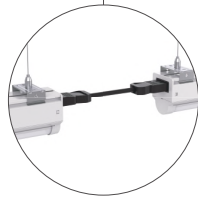
Installation/connection method



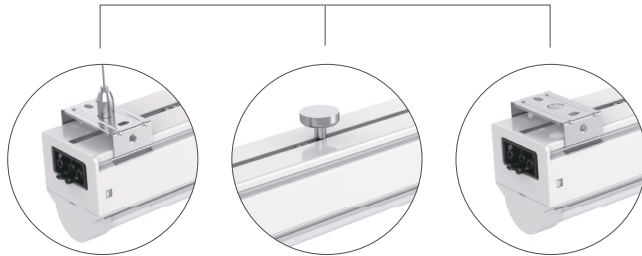
Quick Connect Clip



Fast Connector



Installation



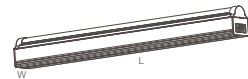
Suspension

Magnet tool free installation

Surface Mounting



Pro-Line



Pro-Line is a complete LED solutions designed for shelf led lighting by Magnet tool free installation. And it's also widely used in the office /commercial / industrial / education applications.

The battens can be connected through the end by quick Wieland connector. This allows end to end continuous tool free installation.

► Features

- > Up to 160lm/W
- > Quick Wieland Connector For Multiple Link
- > Magnet tool-free Installation / Surface Mounted / Suspension
- > 5 years warranty

► T8 Module (120°)

Order Code	Rated Power	Lumen	LM/W	Flicker Free	Dimension (mm)	GW/CTN	QTY/CTN
LL307-02W-CN1-10F01-00	10W	typ.1600	typ.160	Y	L600 X W55 X H58	6.4kg	10pcs
LL307-04W-CN1-17F01-00	17W	typ.2720	typ.160	Y	L1200 X W55 X H58	11.3kg	10pcs
LL307-04W-CN1-32F01-00	32W	typ.5120	typ.160	Y	L1200 X W55 X H58	11.3kg	10pcs
LL307-05W-CN1-28F01-00	28W	typ.4480	typ.160	Y	L1500 X W55 X H58	14.5kg	10pcs
LL307-05W-CN1-56F01-00	56W	typ.8960	typ.160	Y	L1500 X W55 X H58	14.5kg	10pcs
LL307-06W-CN1-32F01-00	32W	typ.5120	typ.160	Y	L1800 X W55 X H58	17.8kg	10pcs
LL307-06W-CN1-62F01-00	62W	typ.9920	typ.160	Y	L1800 X W55 X H58	17.8kg	10pcs

► CCT

Single Color
Tri-color

► Function

► Electrical Parameters

AC 200-240V
PF >0.95
THD <15%
Flicker Free

► Photometric Parameters

120 LM/W
140 LM/W
160 LM/W
CRI>80
SDCM <5
LM79 TM-21
EPP2.0

► Wiring

Double wiring

► Finish

White
Gray
Black

▶ Lens Module (30°/60°/90°/LR25 Optional)

Order Code	Wattage	Lumen	LM/W	Flicker Free	Dimension (mm)	GW/CTN	QTY/CTN
LL300-02W-CN1-10F01-00	10W	typ.1600	typ.160	Y	L600 X W55 X H63.5	6.8kg	8pcs
LL300-04W-CN1-17F01-00	17W	typ.2720	typ.160	Y	L1200 X W55 X H63.5	12.5kg	8pcs
LL300-04W-CN1-32F01-00	32W	typ.5120	typ.160	Y	L1200 X W55 X H63.5	12.5kg	8pcs
LL300-05W-CN1-28F01-00	28W	typ.4480	typ.160	Y	L1500 X W55 X H63.5	15.5kg	8pcs
LL300-05W-CN1-56F01-00	56W	typ.8960	typ.160	Y	L1500 X W55 X H63.5	15.5kg	8pcs
LL300-06W-CN1-32F01-00	32W	typ.5120	typ.160	Y	L1800 X W55 X H63.5	18.0kg	8pcs
LL300-06W-CN1-62F01-00	62W	typ.9920	typ.160	Y	L1800 X W55 X H63.5	18.0kg	8pcs

▶ Frosted Module

Order Code	Rated Power	Lumen	LM/W	Flicker Free	Dimension (mm)	GW/CTN	QTY/CTN
LL304-02W-CN1-10F01-00	10W	typ.1600	typ.160	Y	L600 X W55 X H63.5	5.8kg	8pcs
LL304-04W-CN1-17F01-00	17W	typ.2720	typ.160	Y	L1200 X W55 X H63.5	11.5kg	8pcs
LL304-04W-CN1-32F01-00	32W	typ.5120	typ.160	Y	L1200 X W55 X H63.5	11.5kg	8pcs
LL304-05W-CN1-28F01-00	28W	typ.4480	typ.160	Y	L1500 X W55 X H63.5	14.5kg	8pcs
LL304-05W-CN1-56F01-00	56W	typ.8960	typ.160	Y	L1500 X W55 X H63.5	14.5kg	8pcs
LL304-06W-CN1-32F01-00	32W	typ.5120	typ.160	Y	L1800 X W55 X H63.5	17.0kg	8pcs
LL304-06W-CN1-62F01-00	62W	typ.9920	typ.160	Y	L1800 X W55 X H63.5	17.0kg	8pcs

▶ Gentle Module (Low glare UGR<22)

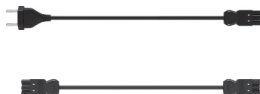
Order Code	Rated Power	Lumen	LM/W	Flicker Free	Dimension (mm)	GW/CTN	QTY/CTN
LL305-02W-KN1-10F01-00	10W	typ.1200	typ.120	Y	L605 X W55 X H63.5	6.0kg	8pcs
LL305-04W-KN1-17F01-00	17W	typ.2040	typ.120	Y	L1205 X W55 X H63.5	11.5kg	8pcs
LL305-04W-KN1-34F01-00	34W	typ.4080	typ.120	Y	L1205 X W55 X H63.5	11.5kg	8pcs
LL305-05W-KN1-22F01-00	22W	typ.2640	typ.120	Y	L1505 X W55 X H63.5	14.5kg	8pcs
LL305-05W-KN1-40F01-00	40W	typ.4800	typ.120	Y	L1505 X W55 X H63.5	14.5kg	8pcs
LL305-06W-KN1-27F01-00	27W	typ.3240	typ.120	Y	L1805 X W55 X H63.5	17.0kg	8pcs
LL305-06W-KN1-50F01-00	50W	typ.6000	typ.120	Y	L1805 X W55 X H63.5	17.0kg	8pcs

▶ Narrow Module (80°)

Order Code	Rated Power	Lumen	LM/W	Flicker Free	Dimension (mm)	GW/CTN	QTY/CTN
LL306-02W-CN1-10F01-00	10W	typ.1600	typ.160	Y	L605 X W55 X H50	5.7kg	10pcs
LL306-04W-CN1-17F01-00	17W	typ.2720	typ.160	Y	L1200 X W55 X H50	11.3kg	10pcs
LL306-04W-CN1-32F01-00	32W	typ.5120	typ.160	Y	L1200 X W55 X H50	11.3kg	10pcs
LL306-05W-CN1-28F01-00	28W	typ.4480	typ.160	Y	L1500 X W55 X H50	14.5kg	10pcs
LL306-05W-CN1-56F01-00	56W	typ.8960	typ.160	Y	L1500 X W55 X H50	14.5kg	10pcs
LL306-06W-CN1-32F01-00	32W	typ.5120	typ.160	Y	L1800 X W55 X H50	17.8kg	10pcs
LL306-06W-CN1-62F01-00	62W	typ.9920	typ.160	Y	L1800 X W55 X H50	17.8kg	10pcs
LL306-06W-CN1-72F01-00	72W	typ.11520	typ.160	Y	L1800 X W55 X H50	17.8kg	10pcs

▶ Accessory

Order Code	Product name
ASS-WIR-F318FU-1500-00	1500mm EU Plug Connector
ASS-WIR-F318FU-2000-04	2000mm EU Plug Connector
ASS-WIR-F318FU-3000-00	3000mm EU Plug Connector
ASS-WIR-F318FU-0300-01	300mm Male & Female Connector
ASS-WIR-F318FU-0900-01	900mm Male & Female Connector
ASS-WIR-F318FU-1500-01	1500mm Male & Female Connector
ASS-WIR-F315FU-2000-00	2000mm Male & Female Connector



Asymmetric Light

- > Toppo designed different style asymmetric light as a modern lighting mouldle to replace the traditional asymmetric fluorescent light . The LED asymmetric lights are more and more popular nowadays . Because it offer a much better lighting efficiency and the glare data .
- > The asymmetric lighting not only use the aluminum case as heat sink , but also use flicker free driver on different function to reach customer's request . It offer a higher lumen out up to 160LM/E
- > The asymmetric lighting were widely use on the education lighting applications , Office lighting application and some special lighting applications which need the asymmetric lightnng emitting .



Categories



Fasco Asymmetric
AL100



Dasco Asymmetric
AL200

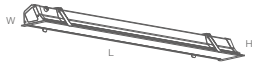


Track Asymmetric
AL300



Fasco Asymmetric

AL100



The fasco asymmetric light is a recessed Led light with the milky diffuser , The aluminum heat sink helps the fasco asymmetric light offer a long life time by 5 years warranty.

► Features

- > Aluminum heat sink
- > Speical asymmetric design with milkey cover
- > Recessed installation
- > 5 years warranty



► CCT Single Color Tri-color

► Function

► Electrical Parameters



► Photometric Parameters

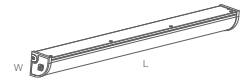


► Data Sheet

Order Code	Rated Power	Lumen	LM/W	Out-out Size (mm)	Dimension (mm)	GW/CTN	QTY/CTN
AL100-04W-PT1-28F01-00	18-28W	typ.2160-3360	typ.120	1175 X 120	L1195 X W140 X H80	13.5kg	4pcs

Dasco Asymmetric

AL200



The dasco asymmetric light is a surface mouting Led light with the milky diffuser , The aluminum heat sink helps the dasco asymmetric light offer a long life time by 5 years warranty.

► Features

- > Aluminum heat sink
- > Speical asymmetric design with milkey cover
- > Surface mounting installation
- > 5 years warranty



► CCT Single Color Tri-color

► Function

► Electrical Parameters



► Photometric Parameters



► Data Sheet

Order Code	Rated Power	Lumen	LM/W	Flicker Free	Dimension (mm)	GW/CTN	QTY/CTN
AL100-04W-DT1-25F01-00	15-25W	typ.2100-3500	typ.140	Y	L1200 X W102.5 X H102.5	13.5kg	4pcs

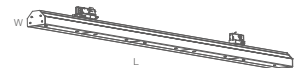


Track Asymmetric Light



Track Asymmetric

AL300



The track asymmetric light is special design which with the track installation, it was widely used on the retail application because it has 2 side lighting emitting . Aluminum case is an excellent heating sink, the high technology SMD2835 provide a more higher lumen output.

► Features

- > Aluminum heat sink
- > Special 2 side lighting
- > Track installation
- > 5 years warranty

► Data Sheet

Order Code	Rated Power	Lumen	LM/W	Flicker Free	Dimension (mm)	GW/CTN	QTY/CTN
AL300-04W-CN1-38D01-00	Down 32W+Up 6W	typ.6000	typ.160	Y	L1200 X W86 X H97.5	14kg	4pcs
AL300-05W-CN1-47D01-00	Down 40W+Up 7W	typ.7500	typ.160	Y	L1500 X W86 X H97.5	17kg	4pcs



► CCT



► Function



► Electrical Parameters



► Photometric Parameters



Tri-proof Lights

>The aluminum tri-proof lights are a new modern design which with more function options and up to 160LM/W.

>All of aluminum tri-proof lights are IP65 and IK10 protected,the different options make the clients use the aluminum tri-proof lights on differents applications, Such as: Car parks, Factories, ect.



Categories



Tri-proof Light
TR100



Tri-proof Light
TR200



Tri-proof Light
TR300



Tubar Light
TR400



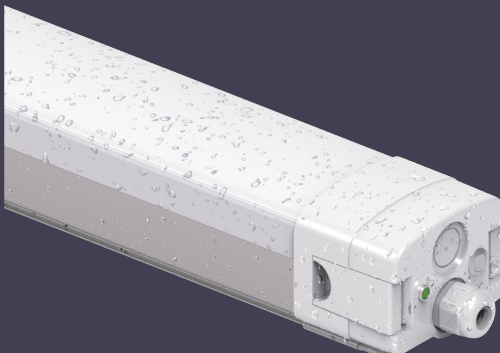
NCF Luminaire
TR500



NCF Luminaire
TR600



Design Profile



IP65
IK10
UP to 160LM/W

Prime Tri-proof

TR100



Prime tri-proof is a tool free multi connected fitting which with various of function options as be showed on this catalogue.

The excellent heating sink, function options and multi connecting make it has a wide range of used in different applications.

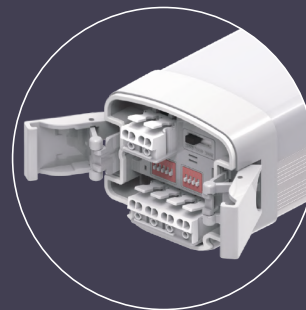
▶ Features

- > Quick snap end caps for easy installation
- > CCT & Wattage adjustable on end cap.
- > 5 wires 3 phase for more quantity linkable
- > 160LM/W high lumen efficacy
- > Single or linkable installation
- > 5 years warranty

- ▶ CCT
 - Single Color
 - Tri-color
- ▶ Function
 - Dim. DDP
 - DALI
 - MS
 - EM
 - 3Phase
- ▶ Electrical Parameters
 - AC 200-240V
 - PF >0.95
 - THD <15%
 - Flicker Free
- ▶ Photometric Parameters
 - 120 LM/W
 - 140 LM/W
 - 160 LM/W
 - CRI>80
 - LMF9
 - ERP2.0
 - SDCM <5
 - TM-21
- ▶ Wiring
 - Single wiring
 - Double wiring
 - Swires 3Phase
 - Swires 3Phase
 - 7wires 3Phase
- ▶ IP/IK
 - IP65
 - IK10

▶ Data Sheet

Order Code	Rated Power	Lumen	LM/W	Flicker Free	Dimension (mm)	GW/CTN	QTY/CTN
TR100-02W-DN1-22F01-00	22W	typ.3500	typ.160	Y	L625 X W85 X H73	6.5kg	4pcs
TR100-04W-DN1-40F01-00	40W	typ.6400	typ.160	Y	L1200 X W85 X H73	9.5kg	4pcs
TR100-04W-DN1-60F01-00	60W	typ.9600	typ.160	Y	L1200 X W85 X H73	9.5kg	4pcs
TR100-05W-DN1-40F01-00	40W	typ.6400	typ.160	Y	L1500 X W85 X H73	12.5kg	4pcs
TR100-05W-DN1-60F01-00	60W	typ.9600	typ.160	Y	L1500 X W85 X H73	12.5kg	4pcs
TR100-08W-DN1-1BF01-00	100W	typ.16000	typ.160	Y	L2400 X W85 X H73	19.0kg	4pcs



Function options

- > CCT switch
- > Wattage switch
- >EM testing switch
- >MS switch
- >3 phase switch
- >3/5/7 wires terminal



Deco Tri-proof

TR200



Deco tri-proof is new design which use the gear tray to realize the function options. The gear tray is taken put from the end cap.

The excellent heating sink, function options and multi connecting make it has a wide range of used in different applications.

Features

- > Quick snap end caps for easy installation
- > Easy for LED driver replacement
- > CCT & Wattage adjustable
- > 160LM/W with high lumen efficacy
- > Single or linkable installation
- > 5 years warranty

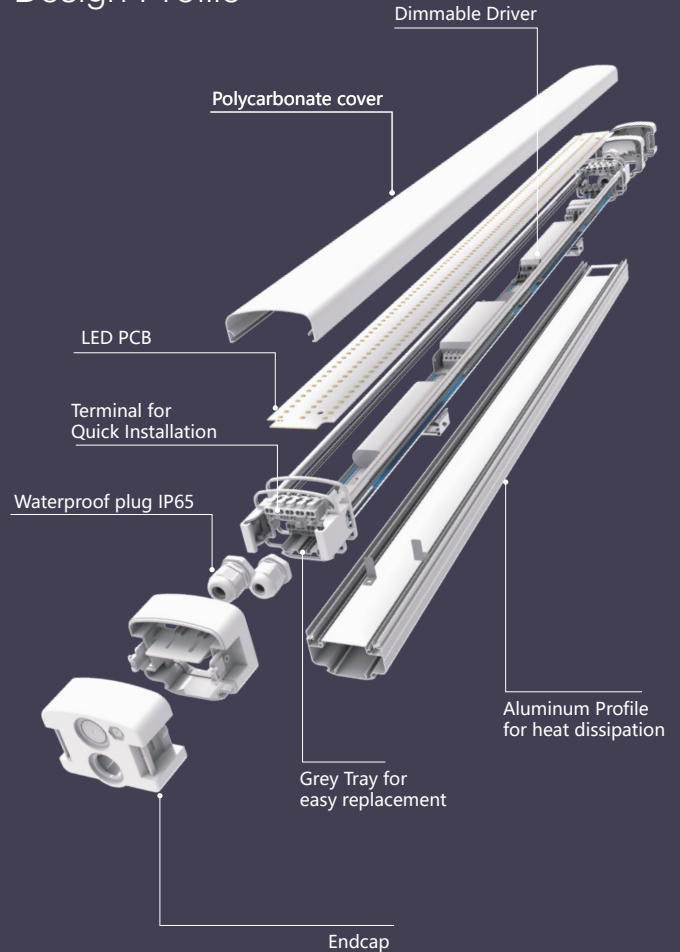
Data Sheet

Order Code	Rated Power	Lumen	LM/W	Flicker Free	Dimension (mm)	GW/CTN	QTY/CTN
TR200-02W-DN1-22F01-00	22W	typ.3500	typ.160	Y	L625 X W85 X H73	6.5kg	4pcs
TR200-04W-DN1-40F01-00	40W	typ.6400	typ.160	Y	L1200 X W85 X H73	9.5kg	4pcs
TR200-04W-DN1-60F01-00	60W	typ.9600	typ.160	Y	L1200 X W85 X H73	9.5kg	4pcs
TR200-05W-DN1-40F01-00	40W	typ.6400	typ.160	Y	L1500 X W85 X H73	12.5kg	4pcs
TR200-05W-DN1-60F01-00	60W	typ.9600	typ.160	Y	L1500 X W85 X H73	12.5kg	4pcs
TR200-08W-DN1-100F01-00	100W	typ.16000	typ.160	Y	L2400 X W85 X H73	19.0kg	4pcs



- ▶ CCT: Single Color, Tri-color
- ▶ Function: DALI, ZigBee, etc.
- ▶ Electrical Parameters: AC 200-240V, PF >0.95, THD <15%, Flicker Free
- ▶ Photometric Parameters: 120 LM/W, 140 LM/W, 160 LM/W, CR>80, SDCM <5, LM79 TM-21, ERP2.0
- ▶ Wiring: Single wiring, Double wiring, 3wires 3Phase, 5wires 3Phase, 7wires 3Phase
- ▶ IP/IK: IP65, IK10

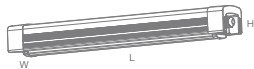
Design Profile





Basic Tri-proof

TR300



Basic Tri-proof light which were widely used on warehouses, factories, car parks, sports facilities etc. Outdoor, indoor commercial & industrial applications. The Aluminum casing provides excellent heating dissipation. The high technology SMD2835 provide a more higher lumen output, up to 160lm/W.

Features

- > IP65/IK10 approval
- > Single or multiple link
- > 5 years warranty

Data Sheet

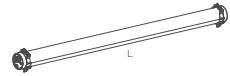
Order Code	Rated Power	Lumen	LM/W	Flicker Free	Dimension (mm)	GW/CTN	QTY/CTN
TR300-02W-DN1-22F01-00	22W	typ.3500	typ.160	Y	L625 X W85 X H78	7.8kg	4pcs
TR300-04W-DN1-40F01-00	40W	typ.6400	typ.160	Y	L1225 X W85 X H78	12.5kg	4pcs
TR300-04W-DN1-60F01-00	60W	typ.9600	typ.160	Y	L1225 X W85 X H78	12.5kg	4pcs
TR300-05W-DN1-40F01-00	40W	typ.6400	typ.160	Y	L1525 X W85 X H78	14.5kg	4pcs
TR300-05W-DN1-60F01-00	60W	typ.9600	typ.160	Y	L1525 X W85 X H78	14.5kg	4pcs
TR300-08W-DN1-1BF01-00	100W	typ.16000	typ.160	Y	L2425 X W85 X H78	24.0kg	4pcs

- ▶ CCT Single Color 3000K 4000K 5000K 6000K
- ▶ Function
- ▶ Electrical Parameters
- ▶ Photometric Parameters
- ▶ Wiring
- ▶ IP/IK



Tubar Lights

TR400



IP69K Tubar light an ideal solution for chemical cleaning, car washing, food processing and poultry lighting etc. industrial applications.

PMMA case for NIH3-Anti Corrosion Resistance, PC Housing for UV Resistance. The high technology SMD2835 provide a more higher lumen output.

Features

- > IP69K / IK10 Protection
- > Single or multiple link
- > 5 years warranty

Data Sheet

Order Code	Rated Power	Lumen	LM/W	Flicker Free	Dimension (mm)	GW/CTN	QTY/CTN
TR400-02W-DN1-22F01-00	22W	typ.3050	typ.140	Y	L600 X D78	7.8kg	4pcs
TR400-04W-DN1-40F01-00	40W	typ.5500	typ.140	Y	L1200 X D78	12.5kg	4pcs
TR400-04W-DN1-60F01-00	60W	typ.8400	typ.140	Y	L1200 X D78	12.5kg	4pcs
TR400-05W-DN1-60F01-00	60W	typ.8400	typ.140	Y	L1500 X D78	14.5kg	4pcs

- ▶ CCT Single Color 3000K 4000K 5000K 6000K
- ▶ Function
- ▶ Electrical Parameters
- ▶ Photometric Parameters
- ▶ Wiring
- ▶ Material
- ▶ IP/IK

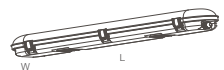


NCF Luminaires



Single NCF

TR500



Single NCF fitting is a new design to replace the traditional fluorescent fitting. The different lengths are available. Waterproof, Dust-proof, Corrosion-Proof, is the basic features of the luminaires. Exclusive Quick-fit design for faster installation.

Features

- > Easy installation with fast connection design
- > End or rear cable entry
- > IP 65 Rating, High impact IK08
- > Single installation or linkable
- > 5 years warranty

- ▶ CCT Single Color Tri-color
- ▶ Function DALI
- ▶ Electrical Parameters AC 200-240V PF >0.95 THD <15% Flicker Free
- ▶ Photometric Parameters 120 LM/W 140 LM/W CR>80 SDCM <5 LM78 TM-21 ERP2.0
- ▶ Wiring Single wiring Double wiring
- ▶ IP/IK IP65 IK08

▶ Data Sheet

Order Code	Rated Power	Lumen	LM/W	Flicker Free	Dimension (mm)	GW/CTN	QTY/CTN
TR500-02W-DN1-20FD1-00	20W	typ.2800	typ.140	Y	L600 X W80 X H75	6.2kg	6pcs
TR500-04W-DN1-30FD1-00	30W	typ.4200	typ.140	Y	L1200 X W80 X H75	11.2kg	6pcs
TR500-05W-DN1-25FD1-00	25W	typ.3500	typ.140	Y	L1500 X W80 X H75	14.2kg	6pcs
TR500-05W-DN1-50FD1-00	50W	typ.7000	typ.140	Y	L1500 X W80 X H75	14.2kg	6pcs
TR500-06W-DN1-30FD1-00	30W	typ.4200	typ.140	Y	L1800 X W80 X H75	17.5kg	6pcs
TR500-06W-DN1-50FD1-00	50W	typ.7000	typ.140	Y	L1800 X W80 X H75	17.5kg	6pcs

Tri-proof Lights



Twins NCF

TR510



Twins NCF fitting is a new design to replace the traditional fluorescent fitting. The different lengths are available .
Waterproof , Dust-proof , Corrosion-Proof, is the basic features of the luminaires. Exclusive Quick-fit design for faster installation.

► Features

- > Easy Installation with fast connection design
- > End or rear cable entry
- > IP 65 Rating, High impact IK08
- > Single installation or linkable
- > 5 years warranty

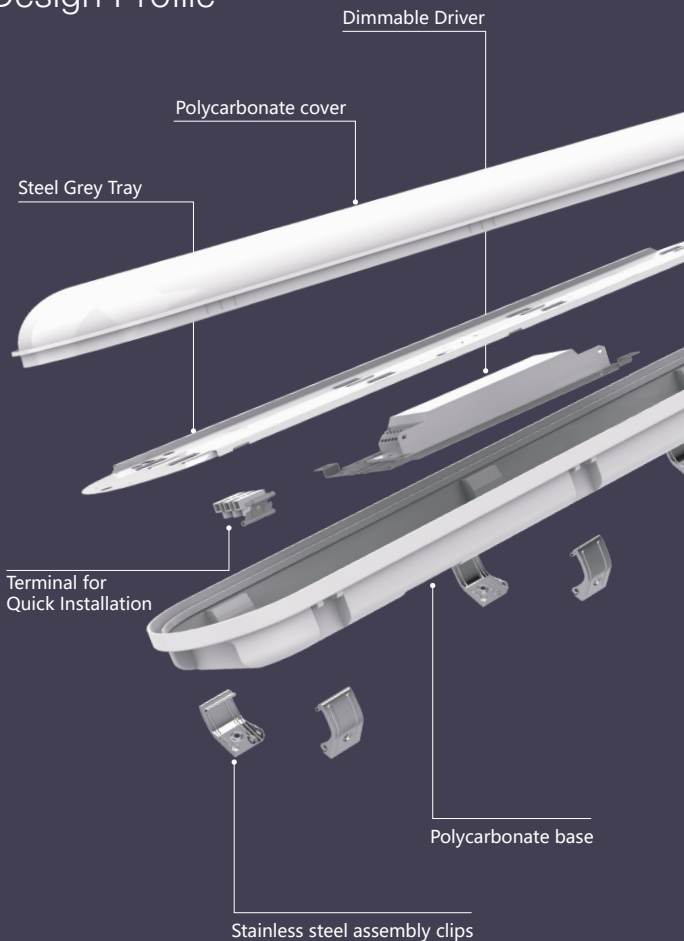
► Data Sheet

Order Code	Rated Power	Lumen	LM/W	Flicker Free	Dimension (mm)	GW/CTN	QTY/CTN
TR510-02W-DN1-22F01-00	20W	typ.2800	typ.140	Y	L600 X W125 X H88	8.64kg	6pcs
TR510-04W-DN1-40F01-00	40W	typ.5600	typ.140	Y	L1200 X W125 X H88	16.0kg	6pcs
TR510-05W-DN1-50F01-00	50W	typ.7000	typ.140	Y	L1500 X W125 X H88	20.4kg	6pcs
TR510-06W-DN1-50F01-00	50W	typ.7000	typ.140	Y	L1800 X W125 X H88	25.5kg	6pcs
TR510-06W-DN1-75F01-00	75W	typ.10500	typ.140	Y	L1800 X W125 X H88	25.5kg	6pcs



- CCT Single Color Tri-color
- Function
- Electrical Parameters
- Photometric Parameters
- Wiring
- IP/IK

Design Profile



Bulkheads

>Toppo designed a various of IP65 2D Bulkhead which be used in different applications but mainly outdoor space, create a balance light making people feel save and secure as they walk through streets, building entrances.

> Each bulkhead has the different housing and shape design to meet various need, perfect lighting solution benefits everyone.

> The professional case style on the bulkheads, easy opening design for easy installation make the client and more interest in Toppo bulkheads.



Categories



MOD



Gamma



Pro R



Pro RA



Pro S



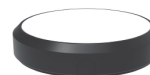
Pro SA



Lunar



Astro



Delta



Wall Pack



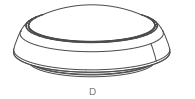
Wall Pack



MOD Bulkheads



MOD 320 BH100



MOD-D320 bulkheads widely use to replace the traditional 2D fluorescent light, The suitable dimension and various of function options make it very popular on the market.
It can reach 120 LM/W and 150 LM/W to help you get a well energy saving.

► Features

- > Up to 150 LM/W@ 2400LM
- > IP65 waterproof
- > UV-Anti
- > Various of function options
- > Various of bezels are available
- > Warranty: 5 years

► CCT



► Function



► Electrical Parameters



► Photometric Parameters



► IP Rating



► Finish



► Data Sheet

Order Code	Rated Power	Lumen	LM/W	Function	Flicker Free	Dimension (mm)	GW/CTN	QTY/CTN
BH100-32W-DN1-12F01-00	12W	typ.1800	typ.150	F1-F6	Y	D325 X H113	13.0kg	10pcs
BH100-32W-DN1-16F01-00	16W	typ.2400	typ.150	F1-F6	Y	D325 X H113	14.0kg	10pcs

Bulkheads

Design Profile



Bezels



MOD320F | BH100



MOD320A | BH101



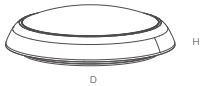
MOD320B | BH102



MOD320C | BH103



MOD 270 BH120



MOD -D270 bulkheads widely use to replace the traditional 2D fluorescent light, The suitable dimension and various of function options make it very popular on the market. It can reach 120 LM/W to help you get a well energy saving.

Features

- > Up to 120 LM/W @1450LM
- > IP65 waterproof
- > UV-Anti
- > Various of function options
- > Warranty: 5 years

Data Sheet

Order Code	Rated Power	Lumen	LM/W	Function	Flicker Free	Dimension (mm)	GW/CTN	QTY/CTN
BH120-27W-DN1-10F01-00	10W	typ.1200	typ.120	F1-F6	Y	D270 X H113	11.0kg	10pcs
BH120-27W-DN1-12F01-00	12W	typ.1450	typ.120	F1-F6	Y	D270 X H113	11.0kg	10pcs



CCT



Function



Electrical Parameters



Photometric Parameters



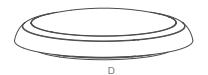
IP Rating



Finish



MOD 470 BH130



MOD -D470 bulkheads widely use to replace the traditional 2D fluorescent light, The suitable dimension and various of function options make it very popular on the market. It can reach 120 LM/W and 150 LM/W to help you get a well energy saving.

Features

- > Up to 150 LM/W@4500LM
- > IP65 waterproof
- > UV-Anti
- > Various of function options
- > Warranty: 5 years

Data Sheet

Order Code	Rated Power	Lumen	LM/W	Function	Flicker Free	Dimension (mm)	GW/CTN	QTY/CTN
BH130-47W-DN1-20F01-00	20W	typ.3000	typ.150	F1-F6	Y	D470 X H93	10.0kg	5pcs
BH130-47W-DN1-30F01-00	30W	typ.4500	typ.150	F1-F6	Y	D470 X H93	10.0kg	5pcs



CCT



Function



Electrical Parameters



Photometric Parameters



IP Rating

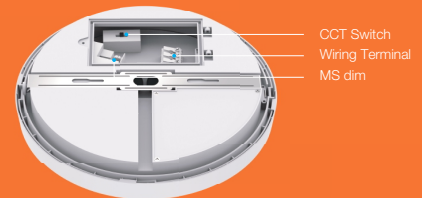


Finish



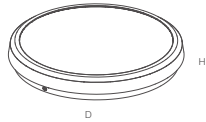


Gamma Bulkheads





Gamma BH200 | D295



Gamma is a smart design and functional bulkhead. Use the bracket for the surface mounting installation, AC terminal and functional switch in the case make the gamma very popular.

Features

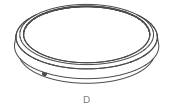
- > Up to 130 LM/W@ 2100 LM
- > IP65 waterproof
- > UV-Anti
- > Various of function options
- > Warranty: 5 years

Data Sheet

Order Code	Rated Power	Lumen	LM/W	Function	Flicker Free	Dimension (mm)	GW/CTN	QTY/CTN
BH200-29W-ST1-12F01-00	12W	typ.1600	typ.130	F1-F6	Y	D295 X H57	12.6kg	10pcs
BH200-29W-ST1-16F01-00	16W	typ.2100	typ.130	F1-F6	Y	D295 X H57	12.6kg	10pcs

- ▶ CCT
 - Single Color: 3000K, 4000K, 5000K, 6000K
 - Tri-color: 2700K, 3000K, 3500K, 4000K, 4500K, 5000K, 5500K, 6000K
- ▶ Function
 - F1: On/Off
 - F2: On/Off + Motion Sensor
 - F3: On/Off + Motion Sensor + Light Sensor
 - F4: On/Off + Motion Sensor + Light Sensor + Dimmer
 - F5: On/Off + Motion Sensor + Light Sensor + Dimmer + UV Sensor
 - F6: On/Off + Motion Sensor + Light Sensor + Dimmer + UV Sensor + Temperature Sensor
- ▶ Electrical Parameters
 - AC 200-240V
 - PF >0.95
 - THD <15%
 - Flicker Free
- ▶ Photometric Parameters
 - 100 LM/W
 - 130 LM/W
 - GR-40 SDCM <5
 - LM79 TM-21
 - ERP2.0
- ▶ IP Rating
 - IP65
- ▶ Finish
 - White
 - Silver
 - Black

Gamma Mini BH210 | D250



Gamma is a smart design and functional bulkhead. Use the bracket for the surface mounting installation, AC terminal and functional switch in the case make the gamma very popular.

Features

- > Up to 120 LM/W@ 1200 LM
- > IP65 waterproof
- > UV-Anti
- > Various of function options
- > Warranty: 5 years

Data Sheet

Order Code	Rated Power	Lumen	LM/W	Function	Flicker Free	Dimension (mm)	GW/CTN	QTY/CTN
BH210-25W-ST1-10F01-00	10W	typ.1200	Typ.120	F1-F6	Y	D250 X H50	12.5kg	10pcs

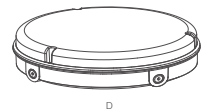
- ▶ CCT
 - Single Color: 3000K, 4000K, 5000K, 6000K
 - Tri-color: 2700K, 3000K, 3500K, 4000K, 4500K, 5000K, 5500K, 6000K
- ▶ Function
 - F1: On/Off
 - F2: On/Off + Motion Sensor
 - F3: On/Off + Motion Sensor + Light Sensor
 - F4: On/Off + Motion Sensor + Light Sensor + Dimmer
 - F5: On/Off + Motion Sensor + Light Sensor + Dimmer + UV Sensor
 - F6: On/Off + Motion Sensor + Light Sensor + Dimmer + UV Sensor + Temperature Sensor
- ▶ Electrical Parameters
 - AC 200-240V
 - PF >0.95
 - THD <15%
 - Flicker Free
- ▶ Photometric Parameters
 - 100 LM/W
 - 120 LM/W
 - GR-40 SDCM <5
 - LM79 TM-21
 - ERP2.0
- ▶ IP Rating
 - IP65
- ▶ Finish
 - White
 - Silver
 - Black



Pro Bulkheads



Pro R280 BH300



Pro is a 4 knock-out bulkhead, It is a IP65 and UV-Anti full with full plastic case.
The multiple function options make the Pro same as the other bulkhead which is widely used on the indoor and outdoor applications.
High technology LED makes the more higher lumens output

► Features

- > Up to 150 LM/W@ 2400 LM
- > IP65 waterproof
- > UV-Anti
- > Various of function options
- > Warranty: 5 years

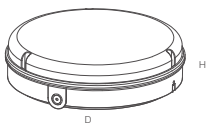
- **CCT**
 - Single Color
 - Tri-color
- **Function**
 - F1: [Icon]
 - F2: [Icon]
 - F3: [Icon]
 - F4: [Icon]
 - F5: [Icon]
 - F6: [Icon]
- **Electrical Parameters**
 - AC 220-240V
 - PF >0.95
 - THD <15%
 - Flicker Free
- **Photometric Parameters**
 - 120 LM/W
 - 150 LM/W
 - CR>90
 - LM79 TM-21
 - ERP2.0
- **IP Rating**
 - IP65
- **Finish**
 - White
 - Silver
 - Black

► Data Sheet

Order Code	Rated Power	Lumen	LM/W	Function	Flicker Free	Dimension (mm)	GW/CTN	QTY/CTN
BH300-28W-ST1-12F01-00	12W	typ.1800	Typ.150	F1-F6	Y	D280 X H85	12.0kg	10pcs
BH300-28W-ST1-16F01-00	16W	typ.2400	Typ.150	F1-F6	Y	D280 X H85	12.0kg	10pcs



Pro R320 BH320



Pro Series bulkheads are designed a function gear tray which be assembled together with PC cover as a assembly unit
The simple design makes our lamp very easy on the installation.

► Features

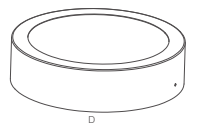
- > Up to 130 LM/W@ 2600LM
- > IP65 waterproof
- > UV-Anti
- > Various of function options
- > Warranty: 5 years

► Data Sheet

Order Code	Rated Power	Lumen	LM/W	Function	Flicker Free	Dimension (mm)	GW/CTN	QTY/CTN
BH320-32W-AT1-20F01-00	20W	typ.2600	typ.130	F1-F6	Y	D320 X H85	11.0kg	5pcs



Pro R320A BH321



Pro Series bulkheads are designed a function gear tray which be assembled together with PC cover as a assembly unit
The simple design makes our lamp very easy on the installation.

► Features

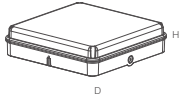
- > Up to 130 LM/W@ 2600LM
- > IP65 waterproof
- > UV-Anti
- > Various of function options
- > Warranty: 5 years

► Data Sheet

Order Code	Rated Power	Lumen	LM/W	Function	Flicker Free	Dimension (mm)	GW/CTN	QTY/CTN
BH321-32W-AT1-20F01-00	20W	typ.2600	typ.130	F1-F6	Y	D320 X H85	13kg	5pcs



Pro S320 BH330



Pro Series bulkheads be designed a function gear tray which be assembled together with PC cover as a assembly unit
The simple design makes our lamp very easy on the installation.

Features

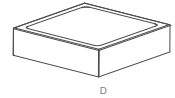
- > Up to 130 LM/W@ 2600LM
- > IP65 waterproof
- > UV-Anti
- > Various of function options
- > Warranty: 5 years

Data Sheet

Order Code	Rated Power	Lumen	LM/W	Function	Flicker Free	Dimension (mm)	GW/CTN	QTY/CTN
BH330-32W-AT1-20F01-00	20W	typ.2600	typ.130	F1-F6	Y	D320 X H85	11.0kg	5pcs



Pro S320A BH331



Pro Series bulkheads be designed a function gear tray which be assembled together with PC cover as a assembly unit
The simple design makes our lamp very easy on the installation.

Features

- > Up to 130 LM/W@ 2600LM
- > IP65 waterproof
- > UV-Anti
- > Various of function options
- > Warranty: 5 years

Data Sheet

Order Code	Rated Power	Lumen	LM/W	Function	Flicker Free	Dimension (mm)	GW/CTN	QTY/CTN
BH331-20W-AT1-20F01-00	20W	typ.2600	typ.130	F1-F6	Y	D320 X H85	13kg	5pcs



Lunar Bulkheads

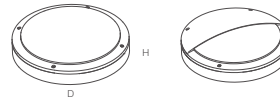


BH420



BH421

Lunar D350 BH420 | Die-cast



Lunar is die-cast bulkhead with full and half moon cover. It is widely used at outdoor applications due to the IP65 / UV-anti / Aluminum case as heating sink. Easy quick installation - wall or ceiling mounted. High technology LED provide a more higher lumen output.

► Features

- > UP to 150LM/W@4500LM
- > Die-cast Aluminum case as heating sink
- > IP65 waterproof & UV-Anti
- > 5 years warranty

► Data Sheet

Order Code	Rated Power	Lumen	LMW	Function	Flicker Free	Dimension (mm)	GW/CTN	QTY/CTN
BH420-35W-DT1-20F01-00	20W	typ.3000	typ.150	F1-F6	Y	D350 X H107	12.0kg	4pcs
BH420-35W-DT1-30F01-00	30W	typ.4500	typ.150	F1-F6	Y	D350 X H107	12.0kg	4pcs

- CCT
 - Single Color
 - Tri-color
- Function
 - F1: [Icon]
 - F2: [Icon]
 - F3: [Icon]
 - F4: [Icon]
 - F5: [Icon]
 - F6: [Icon]
- Electrical Parameters
 - AC 200-240V
 - PF >0.95
 - THD <15%
 - Flicker Free
- Photometric Parameters
 - 120 LMW
 - 150 LMW
 - CRI>80 SDCM <5
 - LM79 TM-21
 - ERP2.0
- IP Rating
 - IP65
- Finish
 - White
 - Gray
 - Black

Bulkheads



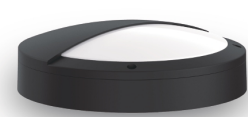
BH410



BH411

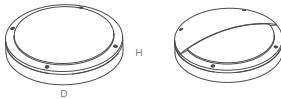


BH400



BH401

Lunar D275 BH410 | Die-cast



Lunar is die-cast bulkhead with full and half moon cover, It is widely used at outdoor applications due to the IP65 / UV-anti / Aluminum case as heating sink. Easy quick installation - wall or ceiling mounted. High technology LED provide a more higher lumen output.

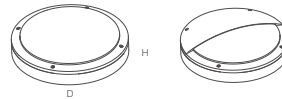
► Features

- > UP to 130LM/W@2100LM
- > Die-cast Aluminum case as heating sink
- > IP65 waterproof & UV-Anti
- > 5 years warranty

► Data Sheet

Order Code	Rated Power	Lumen	LM/W	Function	Flicker Free	Dimension (mm)	GW/CTN	QTY/CTN
BH410-27W-DT1-12F01-00	12W	typ.1500	typ.130	F1-F6	Y	D275 X H80	11.0kg	5pcs
BH410-27W-DT1-16F01-00	16W	typ.2100	typ.130	F1-F6	Y	D275 X H80	11.0kg	5pcs

Lunar D220 BH400 | Die-cast



Lunar is die-cast bulkhead with full and half moon cover, It is widely used at outdoor applications due to the IP65 / UV-anti / Aluminum case as heating sink. Easy quick installation - wall or ceiling mounted. High technology LED provide a more higher lumen output.

► Features

- > UP to 100LM/W@1000LM
- > Die-cast Aluminum case as heating sink
- > IP65 waterproof & UV-Anti
- > 5 years warranty

► Data Sheet

Order Code	Rated Power	Lumen	LM/W	Function	Flicker Free	Dimension (mm)	GW/CTN	QTY/CTN
BH400-22W-DT1-10F01-00	10W	typ.1000	typ.100	F1-F6	Y	D222 X H66	11.0kg	10pcs

► CCT

Single Color Tri-color

► Function

F1: F4:

F2: F5:

F3: F6:

► Electrical Parameters

AC 200-240V PF >0.95 THD <15% Flicker Free

► Photometric Parameters

100 LM/W 130 LM/W CRI>80 SDCM <5 LM79 TM-21 EPP2.0

► IP Rating

IP65

► Finish

White Gray Black

► CCT

Single Color Tri-color

► Function

F1: F4:

F2: F5:

F3: F6:

► Electrical Parameters

AC 200-240V PF >0.95 THD <15% Flicker Free

► Photometric Parameters

100 LM/W CRI>80 SDCM <5 LM79 TM-21 EPP2.0

► IP Rating

IP65

► Finish

White Gray Black

Delta Astro Bulkheads

PC cover + gear tray assembly
with functional module

Standard ON/OFF
Standard+ 3h Emergency
Standard+ Microwave
Standard+ 3h Emergency + Microwave

LiFePO4 -IRON BATTERIES ~3 hours
Emergency Operation

Installation bottom plastic case

Waterproof gasket

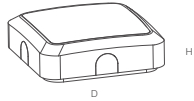
1-10v Dimming/DALI Driver

Plastic outer ring

The plastic outer ring provide the white and black color with 4 knock-out clips



Astro BH500 | S260



Astro series bulkheads are designed a function gear tray which be assembled together with PC cover as a assembly unit

The 4 knock-out clips on the middle rings makes the Astro very easy on the installation

Features

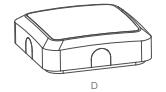
- > Up to 130 LM/W@ 2600LM
- > IP65 waterproof
- > UV-Anti
- > Various of function options
- > Warranty: 5 years

Data Sheet

Order Code	Rated Power	Lumen	LM/W	Function	Flicker Free	Dimension (mm)	GW/CTN	QTY/CTN
BH500-26W-AT1-14F10-00	7-14W	typ.900-1800	typ.130	F1-F6	Y	D263 X H74	11.0kg	5pcs



Astro Mini BH510 | S200



Astro series bulkheads are designed a function gear tray which be assembled together with PC cover as a assembly unit

The 4 knock-out clips on the middle rings makes the Astro very easy on the installation

Features

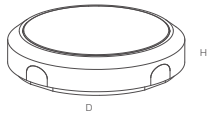
- > Up to 120 LM/W@ 1680LM
- > IP65 waterproof
- > UV-Anti
- > Various of function options
- > Warranty: 5 years

Data Sheet

Order Code	Rated Power	Lumen	LM/W	Function	Flicker Free	Dimension (mm)	GW/CTN	QTY/CTN
BH510-20W-AT1-07F10-00	3.5-7W	typ.420-840	typ.120	F1-F6	Y	D200 X H65	9.7kg	5pcs



Delta BH520 | R290



Delta series bulkheads are designed a function gear tray which be assembled together with PC cover as a assembly unit
The 4 knock-out clips on the middle rings makes the Astro very easy on the installation

Features

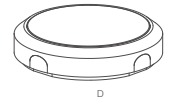
- > Up to 130 LM/W@ 2600LM
- > IP65 waterproof
- > UV-Anti
- > Various of function options
- > Warranty: 5 years

Data Sheet

Order Code	Rated Power	Lumen	LM/W	Function	Flicker Free	Dimension (mm)	GW/CTN	QTY/CTN
BH520-29W-AT1-14F10-00	7-14W	typ.900-1800	typ.130	F1-F6	Y	D290 X H74	11.0kg	5pcs



Delta Mini BH530 | R200



Delta series bulkheads are designed a function gear tray which be assembled together with PC cover as a assembly unit
The 4 knock-out clips on the middle rings makes the Astro very easy on the installation

Features

- > Up to 120 LM/W@ 1680LM
- > IP65 waterproof
- > UV-Anti
- > Various of function options
- > Warranty: 5 years

Data Sheet

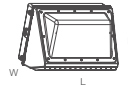
Order Code	Rated Power	Lumen	LM/W	Function	Flicker Free	Dimension (mm)	GW/CTN	QTY/CTN
BH530-20W-AT1-07F10-00	3.5-7W	typ.420-840	typ.120	F1-F6	Y	D200 X H65	9.7kg	5pcs



Wall Pack



Wall Pack WP100



The LED Wall Pack Light is great for commercial and security lighting purposes, where the light will need to operate for long periods of time. Their bright light output and adjustable mount design make them an ideal choice for illuminating building perimeters where control of spill light is important.

► Features

- > Various of functions for options
- > High lumen output at 130LM/W
- > Surge protection: L/N-PE: 5kV, L-N: 5kV
- > Easy Installation
- > Flicker free
- > 5 years warranty

► Data Sheet

Order Code	Rated Power	Lumen	LM/W	Flicker Free	Dimension (mm)	GW/CTN	QTY/CTN
WP100-36B-AN1-50F01-00	50W	typ.6500	typ.130	Y	L363 X W235 X H196	2.8kg	1pcs
WP100-36B-AN1-75F01-00	75W	typ.9750	typ.130	Y	L363 X W235 X H196	3.4kg	1pcs
WP100-36B-AN1-100F01-00	100W	typ.13000	typ.130	Y	L363 X W235 X H196	3.7kg	1pcs

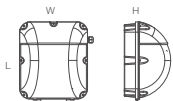
- CCT
 - Single Color
 - Tri-color
- Function
 - ON/OFF
 - PHOTOCELL
- Electrical Parameters
 - AC 100-277V
 - AC 100-360V
 - PF >0.95
 - THD <15%
 - Flicker Free
- Photometric Parameters
 - 130 LM/W
 - CRI>80
 - SDCM <5
 - LM79 TM-21
 - EPP2.0
- IP/IK
 - IP65
 - IK10

Wall Pack



Wall Pack

WP200



The LED Wall Pack Light is great for commercial and security lighting purposes where the light will need to operate for long periods of time. Their bright light output and adjustable mount design make them an ideal choice for illuminating building perimeters where control of spill light is important.

▶ Features

- > Various of functions for options
- > High lumen output at 130LM/W
- > Surge protection: L/N-PE: 5kV, L-N: 5kV
- > Easy Installation
- > Flicker free
- > 5 years warranty

▶ Data Sheet

Order Code	Rated Power	Lumen	LM/W	Flicker Free	Dimension (mm)	GW/CTN	QTY/CTN
WP200-30B-AN1-40FD1-00	40W	typ.5200	typ.130	Y	L308 X W265 X H182	2.8kg	1pcs

▶ CCT



▶ Function



▶ Electrical Parameters



▶ Photometric Parameters



▶ IP/IK



Wall Pack

Ceiling Light

>Toppo LED ceiling lights offer a modern and efficient lighting solution that enhances the aesthetics and functionality of indoor spaces. These ceiling fixtures have gained immense popularity due to their energy efficiency, consuming far less electricity than traditional lighting options such as incandescent bulbs. LED ceiling lights, such as pendant lights, have an impressively long lifespan, requiring minimal maintenance and replacement.

> Toppo LED ceiling lights come in many shapes, sizes and styles, including surface mounted, rod pendant and suspensions. The design allows for seamless integration into various interior styles, providing a clean and unobtrusive look to the ceiling.



Categories



Vasco R350A



Vasco R450A



Vasco R600A



Vasco R900A



LEO R355A



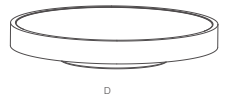
LEO R435A



Vasco Ceiling Light



Vasco R350A CL100



Vasco series is a low glare/UGR<19 and IP20 ceiling light the classic round shape is simple and elegant, the low-glare lighting design makes it suitable for a variety of indoor applications
120LM/W and UGR<19 features make the more and more client interest in the vasco ceiling light

Features

- > Up to 120 LM/W@ 3600LM
- > Aluminum round shape + Prismatic diffuser UGR<19
- > Junction box for easy installation
- > Various of function options
- > Warranty: 5 years

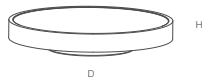
- > CCT: Single Color, Tri-color
- > Function: F1, F2, F3, F4, F5, F6
- > Electrical Parameters: AC, PF, THD, Flicker Free
- > Photometric Parameters: 120 LM/W, CRI, LM79, ERP2.0
- > IP Rating: IP20
- > Finish: White, Black

Data Sheet

Order Code	Rated Power	Lumen	LM/W	Flicker Free	UP Light	Dimension (mm)	GW/CTN	QTY/CTN
CL100-35W-KT1-20F01-00	20W	typ.2400	typ.120	Y	N	D350xH80	14kg	5pcs
CL101-39W-KT1-20F01-00	20W	typ.2400	typ.120	Y	Y	D350xH80	14kg	5pcs



Vasco R450A CL110



Vasco series is a low glare/UGR<19 and IP20 ceiling light the classic round shape is simple and elegant, the low-glare lighting design makes it suitable for a variety of indoor applications

120LM/W and UGR<19 features make the more and more client interest in the vasco ceiling light

► Features

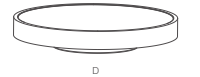
- > Up to 120 LM/W@ 6000LM
- > Aluminum round shape + Prismatic diffuser UGR<19
- > Junction box for easy installation
- > Various of function options
- > Warranty: 5 years

► Data Sheet

Order Code	Rated Power	Lumen	LM/W	Flicker Free	UP Light	Dimension (mm)	GW/CTN	QTY/CTN
CL110-45W-KT1-30F01-00	30W	typ.3600	typ.120	Y	N	D450xH80	17kg	5pcs
CL111-45W-KT1-30F01-00	30W	typ.3600	typ.120	Y	Y	D450xH80	17kg	5pcs



Vasco R600A CL120



Vasco series is a low glare/UGR<19 and IP20 ceiling light the classic round shape is simple and elegant, the low-glare lighting design makes it suitable for a variety of indoor applications

120LM/W and UGR<19 features make the more and more client interest in the vasco ceiling light

► Features

- > Up to 120 LM/W@ 6000LM
- > Aluminum round shape + Prismatic diffuser UGR<19
- > Junction box for easy installation
- > Various of function options
- > Warranty: 5 years

► Data Sheet

Order Code	Rated Power	Lumen	LM/W	Flicker Free	UP Light	Dimension (mm)	GW/CTN	QTY/CTN
CL120-60W-KT1-50F01-00	50W	typ.6000	typ.120	Y	N	D600xH80	5.8kg	1pcs
CL121-60W-KT1-50F01-00	50W	typ.6000	typ.120	Y	Y	D600xH80	5.8kg	1pcs

► CCT



► Function



► Electrical Parameters



► Photometric Parameters



► IP Rating



► Finish



► CCT



► Function



► Electrical Parameters



► Photometric Parameters



► IP Rating

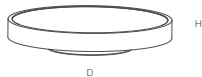


► Finish





Vasco R900A CL130



Vasco series is a low glare/UGR<19 and IP20 ceiling light the classic round shape is simple and elegant, the low-glare lighting design makes it suitable for a variety of indoor applications
120LM/W and UGR<19 features make the more and more client interest in the vasco ceiling light

► Features

- > Up to 120 LM/W@ 8160LM
- > Aluminum round shape + Prismatic diffuser UGR<19
- > Junction box for easy installation
- > Various of function options
- > Warranty: 5 years

► Data Sheet

Order Code	Rated Power	Lumen	LM/W	Flicker Free	UP Light	Dimension (mm)	GW/CTN	QTY/CTN
CL130-90W-KT1-88F01-00	68W	typ.8160	typ.120	Y	N	D900xH90	7kg	1pcs
CL131-90W-KT1-88F01-00	68W	typ.8160	typ.120	Y	Y	D900xH90	7kg	1pcs

► CCT



► Function



► Electrical Parameters



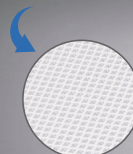
► Photometric Parameters



► IP Rating



► Finish



Prismatic

Eye Protection
Anti-Glare
UGR<19 Low Glare
No Flicker, No noise

PCB + LED + Metal plate assembly

PS diffuser as the light guide

Prismatic diffuser for UGR<19

Aluminum outer ring

The aluminum outer ring provide the white and black color

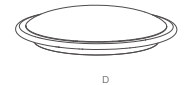
Installation junction with functional module

Standard ON/OFF
Standard+ 3h Emergency
Standard+ Microwave
Standard+ 3h Emergency + Microwave

Leo Ceiling Light



LEO R355A CL200



Leo series is an IP20 ceiling for indoor use, it use the aluminum case as heat sink and easy installation. 130LM/W output make the LEO ceiling light widely use on various of indoor applications .

Features

- > Up to 130 LM/W@ 3600LM
- > Aluminum housing + PC cover
- > Various of function options
- > Warranty: 5 years

Data Sheet

Order Code	Rated Power	Lumen	LM/W	Flicker Free	Dimension (mm)	GW/CTN	QTY/CTN
CL200-35W-KT1-20F01-00	20W	typ.3600	typ.130	Y	D355xH100	10.5kg	10pcs
CL200-35W-KT1-30F01-00	30W	typ.3900	typ.130	Y	D355xH100	10.5kg	10pcs

► CCT

Single Color: Tri-color:

► Function

F1: F4:

F2: F5:

F3: F6:

► Electrical Parameters

AC 200-240V PF >0.95 Flicker Free

► Photometric Parameters

100 LM/W 130 LM/W LM79 TM-21

► IP Rating

IP20

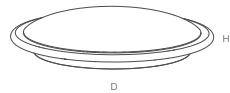
► Finish

White Black

Ceiling Light



LEO R435A CL210



Leo series is an IP20 ceiling for indoor use, it use the aluminum case as heat sink and easy installation. 130LM/W output make the LEO ceiling light widely use on various of indoor applications .

► Features

- > Up to 130 LM/W@ 3900LM
- > Aluminum housing + PC cover
- > Various of function options
- > Warranty: 5 years

► Data Sheet

Order Code	Rated Power	Lumen	LM/W	Flicker Free	Dimension (mm)	GW/CTN	QTY/CTN
CL210-43W-KT1-20F01-00	20W	typ.3600	typ.130	Y	D435xH100	12kg	5pcs
CL210-43W-KT1-30F01-00	30W	typ.3900	typ.130	Y	D435xH100	12kg	5pcs

- CCT
 - Single Color:
 - Tri-color:
- Function
 - F1:
 - F2:
 - F3:
 - F4:
 - F5:
 - F6:
- Electrical Parameters
 - AC 200-240V
 - PE 30.5k
 - THD <15%
 - Flicker Free
- Photometric Parameters
 - 100 LM/W
 - CR>80 SDCM <5
 - LM79 TM-21
 - ERP2.0
- IP Rating
 - IP20
- Finish
 - White
 - Black



Aluminum bottom case

Aluminum case with the clips inside to support the gear tray installation

Polycarbonate Cover

Made from virgin polycarbonate achieving high transmittance of 80% and vandal resistance rating of IK08.



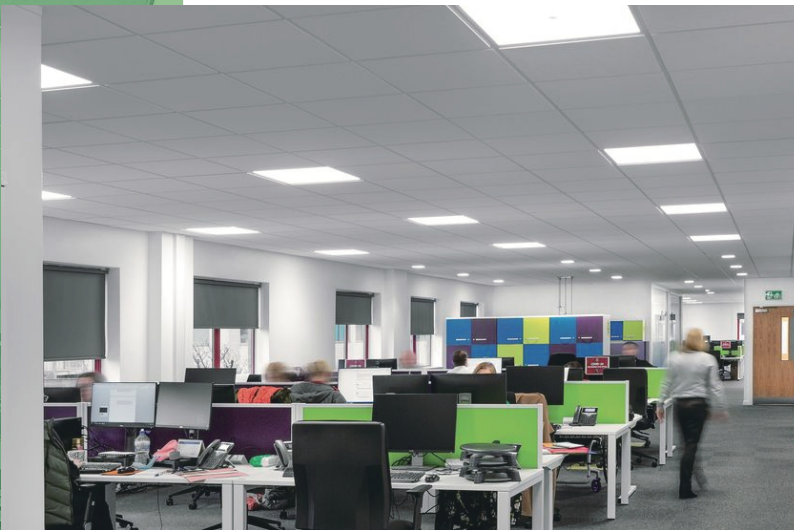
Multifunctional Gear Tray

Standard ON/OFF
Standard+ 3h Emergency
Standard+ Microwave
Standard+ 3h Emergency + Microwave

Panel Light

>LED Panel Light is one of the most popular luminaire for commercial lighting in the market, with helpful solution and effective cost.

> The LED panel light family supply different solution for project and distribution, such as high lumen 160lm/w, low glare UGR<19@150lm/w, CCT adjustable, IP44 waterproof TP(a) / TP(b) fire rated panel light with recessed / surface mounted / suspension installation.



Categories



Backlit Panel



Edgelit Panel



Air Handling Panel



Upscale Panel



Backlit Panel



Backlit Panel PN100 | HB | UGR>19



PN100 Back-lit Panel light is a direct lighting with external driver, adopts SMD led with optical lens to provide a uniform light effect, no LGP design makes the panel light more cost effective, high lumen efficiency available with 105lm/w, 120lm/w, 140lm/w, 160lm/w. Recessed, suspended, and surface mounted installation available.

► Features

- > Ultra flat casing: 32mm
- > Up to 160lm/w@8000LM
- > White frame color: RAL9016
- > Flicker free & 5 years warranty

► Data Sheet

Order Code	Rated Power	Lumen	LM/W	Flicker Free	Dimension (mm)	GW/CTN	QTY/CTN
PN100-22W-SN1-30F01-00	30W	typ.4800	typ.160	Y	L595 X W595 X H32	24.0kg	10pcs
PN100-41W-SN1-30F01-00	30W	typ.4200	typ.140	Y	L1195 X W295 X H32	12.0kg	5pcs
PN100-42W-SN1-50F01-00	50W	typ.8000	typ.160	Y	L1195 X W595 X H32	24.0kg	5pcs
PN100-62W-SN1-30F01-00	30W	typ.4800	typ.160	Y	L620 X W620 X H32	24.5kg	10pcs

- CCT
 - Single Color
 - Tri-color
- Function
 - Dim. 0-10V
 - 0-10V
 - DALI
 - Emergency
- Electrical Parameters
 - AC 200-240V
 - PF >0.95
 - THD <15%
 - Flicker Free
- Photometric Parameters
 - 105/120 LM/W
 - 140/160 LM/W
 - CRI>=90 SDCM <3
 - LM79 TM-21
 - ERP2.0
- Installation
 - Recessed
 - Surface Mounted
 - Suspended
- IP Rating
 - IP20
 - IP44



Prismatic

Backlit Panel

PN110 | TP(b) | UGR>19

Backlit Panel

PN120 | HB | UGR<19



PN110 Back-lit Panel light is a direct lighting with TP(b) fire rated, adopts SMD led with optical lens to provide a uniform light effect, no LSP design makes the panel light more cost effective, high lumen efficiency available with 105lm/w, 120lm/w, 140lm/w, 160lm/w. Recessed, suspended, and surface mounted installation available.

PN120 Back-lit Panel light is a direct lighting with low glare UGR<19, adopts SMD led with optical lens to provide a uniform light effect, no LSP design makes the panel light more cost effective, high lumen efficiency available with 105lm/w, 120lm/w, 140lm/w, 150lm/w. Recessed, suspended, and surface mounted installation available.

- ▶ **Features**
 - > Ultra flat casing: 32mm
 - > Up to 160lm/w@8000LM
 - > White frame color: RAL9016
 - > Flicker free & 5 years warranty



- ▶ **CCT** Single Color Tri-color
- ▶ **Function**
- ▶ **Electrical Parameters**
 - AC 200-240V
 - PF 10.95
 - THD <15%
 - Flicker Free
- ▶ **Photometric Parameters**
 - 105/120 LM/W
 - 140/160 LM/W
 - CRI>80 SDCM <5
 - LM79 TM-21
 - ERP2.0
- ▶ **Installation**
- ▶ **IP Rating**

- ▶ **CCT** Single Color Tri-color
- ▶ **Function**
- ▶ **Electrical Parameters**
 - AC 200-240V
 - PF 10.95
 - THD <15%
 - Flicker Free
- ▶ **Photometric Parameters**
 - 105/120 LM/W
 - 140/150 LM/W
 - CRI>80 SDCM <5
 - LM79 TM-21
 - ERP2.0
 - UGR <19
- ▶ **Installation**
- ▶ **IP Rating**

▶ **Data Sheet**

▶ **Data Sheet**

Order Code	Rated Power	Lumen	LM/W	Flicker Free	Dimension (mm)	GW/CTN	QTY/CTN
PN110-22W-SN1-30F01-00	30W	typ.4800	typ.160	Y	L595 X W595 X H32	24.0kg	10pcs
PN110-41W-SN1-30F01-00	30W	typ.4200	typ.140	Y	L1195 X W295 X H32	12.0kg	5pcs
PN110-42W-SN1-50F01-00	50W	typ.8000	typ.160	Y	L1195 X W595 X H32	24.0kg	5pcs
PN110-62W-SN1-30F01-00	30W	typ.4800	typ.160	Y	L620 X W620 X H32	24.5kg	10pcs

Order Code	Rated Power	Lumen	LM/W	Flicker Free	Dimension (mm)	GW/CTN	QTY/CTN
PN120-22W-SN1-30F01-00	30W	typ.4500	typ.150	Y	L595 X W595 X H32	24.0kg	10pcs
PN120-41W-SN1-30F01-00	30W	typ.4200	typ.140	Y	L1195 X W295 X H32	12.0kg	5pcs
PN120-42W-SN1-50F01-00	50W	typ.7500	typ.150	Y	L1195 X W595 X H32	24.0kg	5pcs
PN120-62W-SN1-30F01-00	30W	typ.4500	typ.150	Y	L620 X W620 X H32	24.5kg	10pcs



Prismatic



Prismatic

Backlit Panel

PN130 | TP(b) | UGR<19



PN130 Back-lit Panel light is a direct lighting with low glare UGR<19, TP(b) fire rated, adopts SMD led with optical lens to provide a uniform light effect, no LGP design makes the panel light more cost effective, high lumen efficiency available with 105lm/w, 120lm/w, 140lm/w, 150lm/w. Recessed, suspended, and surface mounted installation available.

Features

- > Ultra flat casing: 32mm
- > Up to 150lm/w@7500LM, UGR<19, TP(b)
- > White frame color: RAL9016
- > Flicker free & 5 years warranty

- ▶ CCT Single Color Tri-color
- ▶ Function
- ▶ Electrical Parameters
- ▶ Photometric Parameters
- ▶ Installation
- ▶ IP Rating

Data Sheet

Order Code	Rated Power	Lumen	LM/W	Flicker Free	Dimension (mm)	GW/CTN	QTY/CTN
PN130-22W-SN1-30F01-00	30W	typ.4500	typ.150	Y	L595 X W595 X H32	24.0kg	10pcs
PN130-41W-SN1-30F01-00	30W	typ.4200	typ.140	Y	L1195 X W295 X H32	12.0kg	5pcs
PN130-52W-SN1-50F01-00	50W	typ.7500	typ.150	Y	L1195 X W595 X H32	24.0kg	5pcs
PN130-62W-SN1-30F01-00	30W	typ.4500	typ.150	Y	L620 X W620 X H32	24.5kg	10pcs

Backlit Panel

PN140 | TP(a) | UGR<19



PN140 Back-lit Panel light is a direct lighting with low glare UGR<19, TP(a) fire rated, adopts SMD led with optical lens to provide a uniform light effect, no LGP design makes the panel light more cost effective, high lumen efficiency available with 105lm/w, 120lm/w, 140lm/w, 150lm/w. Recessed, suspended, and surface mounted installation available.

Features

- > Ultra flat casing: 32mm
- > Up to 150lm/w@7500LM, UGR<19, TP(a)
- > White frame color: RAL9016
- > Flicker free & 5 years warranty

- ▶ CCT Single Color Tri-color
- ▶ Function
- ▶ Electrical Parameters
- ▶ Photometric Parameters
- ▶ Installation
- ▶ IP Rating

Data Sheet

Order Code	Rated Power	Lumen	LM/W	Flicker Free	Dimension (mm)	GW/CTN	QTY/CTN
PN140-22W-SN1-30F01-00	30W	typ.4500	typ.150	Y	L595 X W595 X H32	24.0kg	10pcs
PN140-41W-SN1-30F01-00	30W	typ.4200	typ.140	Y	L1195 X W295 X H32	12.0kg	5pcs
PN140-42W-SN1-50F01-00	50W	typ.7500	typ.150	Y	L1195 X W595 X H32	24.0kg	5pcs
PN140-62W-SN1-30F01-00	30W	typ.4500	typ.150	Y	L620 X W620 X H32	24.5kg	10pcs



Backlit Panel

PN150 | TP(a) | UGR>19



PN150 Back-fit Panel light is a direct lighting with, TP(a) fire rated, adopts SMD led with optical lens to provide a uniform light effect, no LGP design makes the panel light more cost effective, high lumen efficiency available with 105lm/w, 120lm/w, 150lm/w, 160lm/w. Recessed, suspended, and surface mounted installation available.

Features

- > Ultra flat casing: 32mm
- > Up to 160lm/w@8000LM, TP(a)
- > White frame color: RAL9016
- > Flicker free & 5 years warranty

Data Sheet

Order Code	Rated Power	Lumen	LM/W	Flicker Free	Dimension (mm)	GW/CTN	QTY/CTN
PN150-22W-SN1-30F01-00	30W	typ.4800	typ.160	Y	L595 X W595 X H32	24.0kg	10pcs
PN150-41W-SN1-30F01-00	30W	typ.4500	typ.150	Y	L1195 X W295 X H32	12.0kg	5pcs
PN150-42W-SN1-50F01-00	50W	typ.8000	typ.160	Y	L1195 X W595 X H32	24.0kg	5pcs
PN150-62W-SN1-30F01-00	30W	typ.4800	typ.160	Y	L620 X W620 X H32	24.5kg	10pcs



- ▶ CCT: Single Color (3000K, 4000K, 5000K), Tri-color (2700K, 3000K, 3500K)
- ▶ Function: DMX, DALI, DALI2, Fire
- ▶ Electrical Parameters: AC (200-240V), PF (>0.95), THD (<15%), Flicker Free
- ▶ Photometric Parameters: 105/120 LM/W, 150/160 LM/W, CRI>90, SDCM <3, LM79 TM21, ERP2.0
- ▶ Installation: Recessed, Surface Mounted, Suspended
- ▶ IP Rating: IP20, IP44

Edgelit Panel

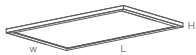




Prismatic

Edgelit Panel

PN200 | HB | UGR>19



PN200 Edge-lit panel is an effective cost panel .PMMA LGP produce uniform light high lumen output up to 140LM/W,it can fit seamlessly into any work place, It is available in recessed, suspended and surface mounted installation method. It makes the panels were widely use on various of applications

Features

- > Suitably efficient - up to 140 LM/W
- > High Luminous flux - up to 7000 lm
- > PMMA LGP as light guide
- > Extra thin aluminum frame
- > 5 years warranty

Data Sheet

Order Code	Rated Power	Lumen	LM/W	Flicker Free	Dimension (mm)	GW/CTN	QTY/CTN
PN200-22W-SN1-30F01-00	30W	typ.4200	typ.140	Y	L595 X W595 X H10	13.0kg	4pcs
PN200-41W-SN1-30F01-00	30W	typ.3900	typ.130	Y	L1195 X W295 X H10	16.5kg	5pcs
PN200-42W-SN1-50F01-00	50W	typ.7000	typ.140	Y	L1195 X W595 X H10	12.0kg	2pcs
PN200-62W-SN1-30F01-00	30W	typ.4200	typ.140	Y	L620 X W620 X H10	16.0kg	4pcs



- ▶ CCT: Single Color, Tri-color
- ▶ Function: DIM, DALI, Non-flashing
- ▶ Electrical Parameters: AC 200-240V, PF >0.95, THD <15%, Flicker Free
- ▶ Photometric Parameters: 105/120 LM/W, 130/140 LM/W, CRI>80 SDCM <5, LM79 TM-21, ERP2.0
- ▶ Installation: Recessed, Surface Mounted, Suspended
- ▶ IP Rating: IP20

Edgelit Panel

PN210 | HB | UGR<19



PN210 Edge-lit panel is Non fire rated low glare panel up to 140LM/W. The comfortable light and high color consistency for various of applications .

It is available in recessed, suspended and surface mounted installation method. It makes the panels were widely use on various of applications

Features

- > Prismatic UGR<19
- > Suitably efficient - up to 140 LM/W
- > High Luminous flux - up to 7000 lm
- > PMMA LGP as light guide
- > Extra thin aluminum frame
- > 5 years warranty

Data Sheet

Order Code	Rated Power	Lumen	LM/W	Flicker Free	Dimension (mm)	GW/CTN	QTY/CTN
PN210-22W-SN1-30F01-00	30W	typ.4200	typ.140	Y	L595 X W595 X H10	13.0kg	4pcs
PN210-41W-SN1-30F01-00	30W	typ.3900	typ.130	Y	L1195 X W295 X H10	16.5kg	5pcs
PN210-42W-SN1-50F01-00	50W	typ.7000	typ.140	Y	L1195 X W595 X H10	12.0kg	2pcs
PN210-62W-SN1-30F01-00	30W	typ.4200	typ.140	Y	L620 X W620 X H10	16.0kg	4pcs



- ▶ CCT: Single Color, Tri-color
- ▶ Function: DIM, DALI, Non-flashing
- ▶ Electrical Parameters: AC 200-240V, PF >0.95, THD <15%, Flicker Free
- ▶ Photometric Parameters: 105/120 LM/W, 130/140 LM/W, CRI>80 SDCM <5, LM79 TM-21, ERP2.0, UGR <19
- ▶ Installation: Recessed, Surface Mounted, Suspended
- ▶ IP Rating: IP20



Prismatic

Edgelit Panel

PN220 | TP(b) | UGR>19



PN220 Edge-lit panel is TP(b) and low glare panel PMMA LGP produce uniform light high lumen up to 140LM/W.

The panels are available in recessed, suspended and surface mounted installation, it makes the panels were widely use on various of applications.

► Features

- > TP(b) fire rated
- > Suitably efficient - up to 140 LM/W
- > High Luminous flux - up to 7000 lm
- > PMMA LGP as light guide
- > Extra thin aluminum frame
- > 5 years warranty

► Data Sheet

Order Code	Rated Power	Lumen	LMW	Flicker Free	Dimension (mm)	GW/CTN	QTY/CTN
PN220-22W-SN1-30F01-00	30W	typ.4200	typ.140	Y	L595 X W595 X H10	13.0kg	4pcs
PN220-41W-SN1-30F01-00	30W	typ.3900	typ.130	Y	L1195 X W295 X H10	16.5kg	5pcs
PN220-42W-SN1-50F01-00	50W	typ.7000	typ.140	Y	L1195 X W595 X H10	12.0kg	2pcs
PN220-62W-SN1-30F01-00	30W	typ.4200	typ.140	Y	L620 X W620 X H10	16.0kg	4pcs

- CCT
 - Single Color
 - Tri-color
- Function
 - Dim-GPI
 - DALI
 - Emergency
- Electrical Parameters
 - AC 200-240V
 - PF >0.95
 - THD <15%
 - Flicker Free
- Photometric Parameters
 - 105/120 LM/W
 - 130/140 LM/W
 - CR>80 SDCM <5
 - LM79 TM-21
 - ERP2.0
- Installation
 - Recessed
 - Surface Mounted
 - Suspended
- IP Rating
 - IP20

Edgelit Panel

PN230 | TP(b) | UGR<19



PN230 Edge-lit panel is a TP(b) and low glare panel up to 140LM/W, It is perfect for use in commercial buildings and environments.

It is available in recessed, suspended and surface mounted installation method. It makes the panels were widely use on various of applications

► Features

- > Suitably efficient - up to 140 LM/W
- > High Luminous flux - up to 7000 lm
- > PMMA LGP as light guide
- > Prismatic UGR-19, TP(b) fire-proof
- > Extra thin aluminum frame
- > 5 years warranty

► Data Sheet

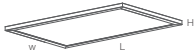
Order Code	Rated Power	Lumen	LMW	Flicker Free	Dimension (mm)	GW/CTN	QTY/CTN
PN230-22W-SN1-30F01-00	30W	typ.4200	typ.140	Y	L595 X W595 X H10	13.0kg	4pcs
PN230-41W-SN1-30F01-00	30W	typ.3900	typ.130	Y	L1195 X W295 X H10	16.5kg	5pcs
PN230-42W-SN1-50F01-00	50W	typ.7000	typ.140	Y	L1195 X W595 X H10	12.0kg	2pcs
PN230-62W-SN1-30F01-00	30W	typ.4200	typ.140	Y	L620 X W620 X H10	16.0kg	4pcs

- CCT
 - Single Color
 - Tri-color
- Function
 - Dim-GPI
 - DALI
 - Emergency
- Electrical Parameters
 - AC 200-240V
 - PF >0.95
 - THD <15%
 - Flicker Free
- Photometric Parameters
 - 105/120 LM/W
 - 130/140 LM/W
 - CR>80 SDCM <5
 - LM79 TM-21
 - ERP2.0
 - UGR <19
- Installation
 - Recessed
 - Surface Mounted
 - Suspended
- IP Rating
 - IP20



Edgelit Panel

PN240 | TP(a) | UGR>19



PN240 Edge-lit panel is a TP(a) fire rated panel. It is an energy savings solution with up to 140 lm/W lumen output.

The panels are available in recessed, suspended and surface mounted installation, it makes the panels widely use on various of applications.

► Features

- > TP(a) fire-proof
- > Suitably efficient - up to 140 LM/W
- > High Luminous flux - up to 7000 lm
- > PMMA LGP as light guide
- > Extra thin aluminum frame
- > 5 years warranty

► Data Sheet

Order Code	Rated Power	Lumen	LM/W	Flicker Free	Dimension (mm)	GW/CTN	QTY/CTN
PN240-22W-SN1-30F01-00	30W	typ.4200	typ.140	Y	L595 X W595 X H10	13.0kg	4pcs
PN240-41W-SN1-30F01-00	30W	typ.3900	typ.130	Y	L1195 X W295 X H10	16.5kg	5pcs
PN240-42W-SN1-50F01-00	50W	typ.7000	typ.140	Y	L1195 X W595 X H10	12.0kg	2pcs
PN240-62W-SN1-30F01-00	30W	typ.4200	typ.140	Y	L620 X W620 X H10	16.0kg	4pcs



- CCT CCT selection icons: Single Color, 3000K, 4000K, 5000K, Tri-color, 2700K, 3000K, 3500K, 4000K, 4500K, 5000K
- Function DALI, DALI 2, DALI 2+1, DALI 2+2, DALI 2+3, DALI 2+4, DALI 2+5, DALI 2+6, DALI 2+7, DALI 2+8, DALI 2+9, DALI 2+10, DALI 2+11, DALI 2+12, DALI 2+13, DALI 2+14, DALI 2+15, DALI 2+16, DALI 2+17, DALI 2+18, DALI 2+19, DALI 2+20, DALI 2+21, DALI 2+22, DALI 2+23, DALI 2+24, DALI 2+25, DALI 2+26, DALI 2+27, DALI 2+28, DALI 2+29, DALI 2+30, DALI 2+31, DALI 2+32, DALI 2+33, DALI 2+34, DALI 2+35, DALI 2+36, DALI 2+37, DALI 2+38, DALI 2+39, DALI 2+40, DALI 2+41, DALI 2+42, DALI 2+43, DALI 2+44, DALI 2+45, DALI 2+46, DALI 2+47, DALI 2+48, DALI 2+49, DALI 2+50, DALI 2+51, DALI 2+52, DALI 2+53, DALI 2+54, DALI 2+55, DALI 2+56, DALI 2+57, DALI 2+58, DALI 2+59, DALI 2+60, DALI 2+61, DALI 2+62, DALI 2+63, DALI 2+64, DALI 2+65, DALI 2+66, DALI 2+67, DALI 2+68, DALI 2+69, DALI 2+70, DALI 2+71, DALI 2+72, DALI 2+73, DALI 2+74, DALI 2+75, DALI 2+76, DALI 2+77, DALI 2+78, DALI 2+79, DALI 2+80, DALI 2+81, DALI 2+82, DALI 2+83, DALI 2+84, DALI 2+85, DALI 2+86, DALI 2+87, DALI 2+88, DALI 2+89, DALI 2+90, DALI 2+91, DALI 2+92, DALI 2+93, DALI 2+94, DALI 2+95, DALI 2+96, DALI 2+97, DALI 2+98, DALI 2+99, DALI 2+100
- Electrical Parameters AC 200-240V, PF >0.95, THD <15%, Flicker Free
- Photometric Parameters 105/120 LM/W, 130/140 LM/W, GR90 SDCM <5, LM79 TM-21, ERP2.0
- Installation Recessed, Surface Mounted, Suspended
- IP Rating IP20



Prismatic

Edgelit Panel

PN250 | TP(a) | UGR<19



PN250 Edge-lit panel is a high end technology with TP(a) fire rated and Low glare - It is up to 140 lm/W lumen output. The various of installation method and professional features make this panel were widely use on office, schools, meeting rooms and commercial applications.

► Features

- > Prismatic UGR<19
- > TP(a) fire-proof
- > Suitably efficient - up to 140 LM/W
- > High Luminous flux - up to 7000 lm
- > PMMA LGP as light guide
- > Extra thin aluminum frame
- > 5 years warranty

► Data Sheet

Order Code	Rated Power	Lumen	LM/W	Flicker Free	Dimension (mm)	GW/CTN	QTY/CTN
PN250-22W-SN1-30F01-00	30W	typ.4200	typ.140	Y	L595 X W595 X H10	13.0kg	4pcs
PN250-41W-SN1-30F01-00	30W	typ.3900	typ.130	Y	L1195 X W295 X H10	16.5kg	5pcs
PN250-42W-SN1-50F01-00	50W	typ.7000	typ.140	Y	L1195 X W595 X H10	12.0kg	2pcs
PN250-62W-SN1-30F01-00	30W	typ.4200	typ.140	Y	L620 X W620 X H10	16.0kg	4pcs

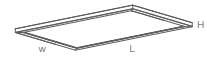


- CCT CCT selection icons: Single Color, 3000K, 4000K, 5000K, Tri-color, 2700K, 3000K, 3500K, 4000K, 4500K, 5000K
- Function DALI, DALI 2, DALI 2+1, DALI 2+2, DALI 2+3, DALI 2+4, DALI 2+5, DALI 2+6, DALI 2+7, DALI 2+8, DALI 2+9, DALI 2+10, DALI 2+11, DALI 2+12, DALI 2+13, DALI 2+14, DALI 2+15, DALI 2+16, DALI 2+17, DALI 2+18, DALI 2+19, DALI 2+20, DALI 2+21, DALI 2+22, DALI 2+23, DALI 2+24, DALI 2+25, DALI 2+26, DALI 2+27, DALI 2+28, DALI 2+29, DALI 2+30, DALI 2+31, DALI 2+32, DALI 2+33, DALI 2+34, DALI 2+35, DALI 2+36, DALI 2+37, DALI 2+38, DALI 2+39, DALI 2+40, DALI 2+41, DALI 2+42, DALI 2+43, DALI 2+44, DALI 2+45, DALI 2+46, DALI 2+47, DALI 2+48, DALI 2+49, DALI 2+50, DALI 2+51, DALI 2+52, DALI 2+53, DALI 2+54, DALI 2+55, DALI 2+56, DALI 2+57, DALI 2+58, DALI 2+59, DALI 2+60, DALI 2+61, DALI 2+62, DALI 2+63, DALI 2+64, DALI 2+65, DALI 2+66, DALI 2+67, DALI 2+68, DALI 2+69, DALI 2+70, DALI 2+71, DALI 2+72, DALI 2+73, DALI 2+74, DALI 2+75, DALI 2+76, DALI 2+77, DALI 2+78, DALI 2+79, DALI 2+80, DALI 2+81, DALI 2+82, DALI 2+83, DALI 2+84, DALI 2+85, DALI 2+86, DALI 2+87, DALI 2+88, DALI 2+89, DALI 2+90, DALI 2+91, DALI 2+92, DALI 2+93, DALI 2+94, DALI 2+95, DALI 2+96, DALI 2+97, DALI 2+98, DALI 2+99, DALI 2+100
- Electrical Parameters AC 200-240V, PF >0.95, THD <15%, Flicker Free
- Photometric Parameters 105/120 LM/W, 130/140 LM/W, GR90 SDCM <5, LM79 TM-21, ERP2.0, UGR <19
- Installation Recessed, Surface Mounted, Suspended
- IP Rating IP20



Air Handling Panel

Air Handling Panel PN300 | TP(a) | UGR<19



Air Handling Panel Light is not only looks clean and pleasing but also result in visual comfort and good feeling for employees in the offices. Heat transfer, which's important to lighting lifespan, remains efficient due to excellent air-handling and air return over entire space. In a office ventilated with good air quality and provided with excellent thermal comfort, the employees will feel more satisfied and happier, playing an crucial role in productivity and positivity.

- ▶ **Features**
 - > Up to 140lm/w
 - > Special design for air handling
 - > Prismatic UGR<19
 - > PMMA LGP
 - > 5 years warranty

- ▶ **CCT**
 - Single Color
 - Tri-color
- ▶ **Function**
 - Dimmable
 - DALI
 - Emergency
- ▶ **Electrical Parameters**
 - AC 200-240V
 - PF >0.95
 - THD <15%
 - Flicker Free
- ▶ **Photometric Parameters**
 - 105/120 LMW
 - 130/140 LMW
 - CR>80
 - SDCM <3
 - LMT9 TM-21
 - ERP2.0
 - UGR <19
- ▶ **Installation**
 - Recessed
 - Surface Mounted
 - Submount
- ▶ **IP Rating**
 - IP20
- ▶ **Finish**
 - White
 - Black

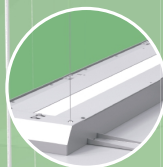
▶ Data Sheet

Order Code	Rated Power	Lumen	LMW	Flicker Free	Dimension (mm)	GW/CTN	QTY/CTN
PN300-21W-SN1-20F01-00	20W	typ.2400	typ.120	Y	L595 X W295 X H25	24.0kg	10pcs
PN300-22W-SN1-32F01-00	32W	typ.4480	typ.140	Y	L595 X W595 X H25	21.0kg	5pcs
PN300-41W-SN1-32F01-00	32W	typ.4480	typ.140	Y	L1195 X W295 X H25	21.0kg	5pcs
PN300-42W-SN1-50F01-00	50W	typ.7000	typ.140	Y	L1195 X W595 X H25	44.0kg	5pcs

Panel Light

Upscale Panel

PN400

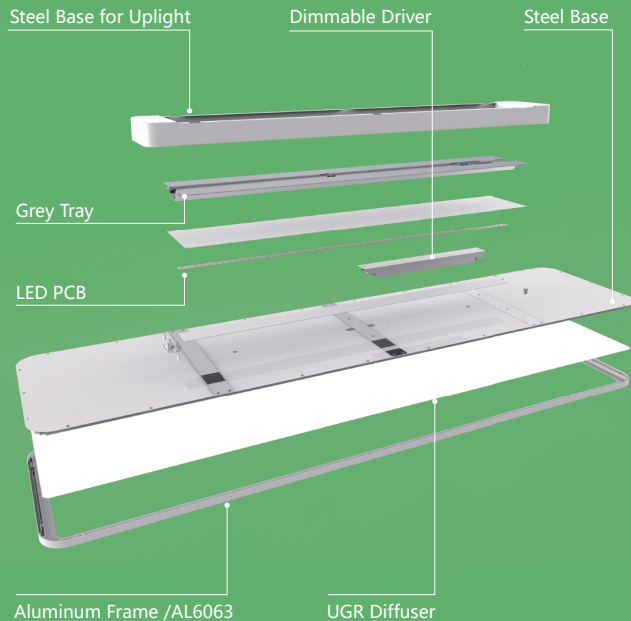


Finish  White  Black

Upscale Panel light is a low UGR suspended up & down panel constructed from Aluminium and rated to IP20. The fitting comes with an integral driver. Colour consistency is adhered to with a 3-Step MacAdams Ellipse binning strategy alongside an LED chipset at CRI>80 ensuring light quality. Available as Switched, 1-10V and DALI dimming options in 3000K 4000K 5000K colour temperature.

Features

- > Various of functions for options
- > High lumen output at 120LM/W UGR<19
- > CCT: 3000-4000-5000K
- > 5 years warranty



▶ CCT  Single Color  Tri-color

▶ Function     

▶ Photometric Parameters



▶ Electrical Parameters



Data Sheet

Order Code	Rated Power	Lumen	LM/W	Flicker Free	Dimension (mm)	GW/CTN	QTY/CTN
PN400-22W-SN1-19F01-00	19W	typ.4320	typ.120	Y	L595 X W295 X H50	5.5kg	1pcs
PN400-41W-SN1-36F01-00	36W	typ.4320	typ.120	Y	L1195 X W295 X H50	8.5kg	1pcs

Down Light

LED downlight series provide turn-key lighting solutions in domestic and commercial applications. Our downlight is a combination of technique and emotion. We offer our customers a platform to experience the good quality and lighting effects with unique design, 120lm/w and more. Ra>80 and Ra>90, smart function. Toppo downlight family provides different solutions for projects and distributions with different product types.



Categories



EVO Down Light
DL100



Slim Down Light
DL200



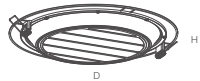
Halo Down Light
DL300



Halo Down Light
DL400



Evo Down Light DL100



Evo down light is new cost-effective backlit down light. It uses the plastic and steel bottom case.

The Evo down light offers 6 different dimensions and function options.

This cost effective down light makes more and more clients interested in it and use it on different applications.

► Features

- > Cost-effective down light
- > Various of dimensions
- > Recessed Installation
- > Package : Standard or color box

► CCT Single Color 3000K 4000K 5000K 6000K

► Function   

► Electrical Parameters



► Photometric Parameters

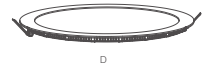


► Data Sheet

Order Code	Wattage	Lumen	LM/W	Flicker Free	Dimension (mm)	Cut-out(mm)	GW/CTN	QTY/CTN
DL100-09W-SN1-04F01-00	4W	typ.320	typ.80	Y	φ90x25	φ72	7.5kg	40pcs
DL100-12W-SN1-08F01-00	8W	typ.640	typ.80	Y	φ120x25	φ107	5.2kg	20pcs
DL100-17W-SN1-12F01-00	12W	typ.1200	typ.100	Y	φ170x25	φ156	4.6kg	10pcs
DL100-20W-SN1-15F01-00	15W	typ.1500	typ.100	Y	φ200x25	φ185	5.3kg	10pcs
DL100-34W-SN1-18F01-00	18W	typ.1980	typ.110	Y	φ240x25	φ225	6.6kg	10pcs
DL100-30W-SN1-22F01-00	22W	typ.2420	typ.110	Y	φ300x25	φ280	9.0kg	10pcs



Slim Down Light DL200



Slim Downlight is a round led panel light with an extra thin die-cast case. It uses the LGP as the light guide.

The 6 dimensions make the slim down widely used in various of different application.

► Features

- > Full rage sizes are available
- > Recessed installation
- > Die casting aluminum case
- > Package : Standard or color box

► CCT Single Color 3000K 4000K 5000K 6000K

► Function   

► Electrical Parameters



► Photometric Parameters

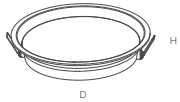


► Data Sheet

Order Code	Wattage	Lumen	LM/W	Flicker Free	Dimension (mm)	Cut-out(mm)	GW/CTN	QTY/CTN
DL200-09W-SN1-04F01-00	4W	typ.320	typ.80	Y	φ88x25	φ65	7.5kg	40pcs
DL200-12W-SN1-08F01-00	8W	typ.640	typ.80	Y	φ120x25	φ105	5.2kg	20pcs
DL200-17W-SN1-12F01-00	12W	typ.1200	typ.100	Y	φ170x25	φ155	4.6kg	10pcs
DL200-19W-SN1-15F01-00	15W	typ.1500	typ.100	Y	φ190x25	φ175	5.3kg	10pcs
DL200-24W-SN1-18F01-00	18W	typ.1980	typ.110	Y	φ240x25	φ225	6.6kg	10pcs
DL200-30W-SN1-22F01-00	22W	typ.2420	typ.110	Y	φ300x25	φ275	9.0kg	10pcs



Halo Down Light DL300



Halo Downlight, die casting aluminum housing design effectively reduce the UGR index. Interchangeable CCT with a slide switch is available.

Features

- > Die-cast housing as heat sink
- > Recessed installation
- > Full range dimension from 2.5 to 8 inches
- > Package : Standard or color box

Data Sheet

Order Code	Wattage	Lumen	LM/W	Flicker Free	Dimension (mm)	Cut-out(mm)	GW/CTN	QTY/CTN
DL300-02W-SN1-05F01-00	5W	typ.450	typ.90	Y	φ90x40	φ80	5.6kg	20pcs
DL300-03W-SN1-09F01-00	9W	typ.1050	typ.120	Y	φ120x40	φ105	6.8kg	20pcs
DL300-04W-SN1-12F01-00	12W	typ.1440	typ.120	Y	φ145x40	φ130	8.0kg	20pcs
DL300-06W-SN1-20F01-00	20W	typ.2400	typ.120	Y	φ175x40	φ160	10.5kg	20pcs
DL300-08W-SN1-30F01-00	30W	typ.3600	typ.120	Y	φ220x40	φ205	7.5kg	10pcs

▶ **CCT** Single Color Tri-color

▶ **Function**

▶ **Electrical Parameters**

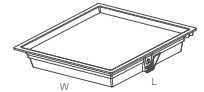
▶ **Photometric Parameters**

▶ **Dimension:** 2.5 / 4 / 5 / 6 / 8 inches

▶ **Finish** White Black



Halo Down Light DL400



Halo Downlight, die casting aluminum housing design effectively reduce the UGR index. Interchangeable CCT with slide switch is available.

Features

- > Die-cast housing as heat sink
- > Recessed installation
- > Full range dimension from 2.5 to 8 inches
- > Package : Standard or color box

Data Sheet

Order Code	Wattage	Lumen	LM/W	Flicker Free	Dimension (mm)	Cut-out(mm)	GW/CTN	QTY/CTN
DL400-02W-SN1-05F01-00	5W	typ.450	typ.90	Y	L90 X W90 X H40	80x80	6.0kg	20pcs
DL400-03W-SN1-09F01-00	9W	typ.1050	typ.120	Y	L120 X W120 X H40	105x105	7.6kg	20pcs
DL400-04W-SN1-12F01-00	12W	typ.1440	typ.120	Y	L145 X W145 X H40	130x130	9.2kg	20pcs
DL400-06W-SN1-20F01-00	20W	typ.2400	typ.120	Y	L170 X W170 X H40	160x160	11.5kg	20pcs
DL400-08W-SN1-30F01-00	30W	typ.3600	typ.120	Y	L220 X W220 X H40	205x205	8.9kg	10pcs

▶ **CCT** Single Color Tri-color

▶ **Function**

▶ **Electrical Parameters**

▶ **Photometric Parameters**

▶ **Dimension:** 2.5 / 4 / 5 / 6 / 8 inches

▶ **Finish** White Black

Tube Light

- > The LED tube is the best retrofit unit to replace the fluorescent tube. Toppo LED tube light has the T8/G13 LED tube which works for the inductive ballast, T6/G5 Led tube to replace the normal G5 fluorescent lamp.
- > The end cap of the led tube is rotatable with scale for easy installation, this makes manipulating beam direction simple by rotating the tube in a fitting
- > The LED tube light are TUV/CE approved, which be widely used in different applications, such as: Schools, Supermarkets, Factories, Warehouses,



Categories



T8 LED Tube
TU08



T6 LED Tube
TU06

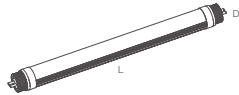


Cabinet Light
CB01



T8 LED Tube

TU08



The T8 LED tube is often used with office lighting and warehouse applications and can be used in both indirect and parabolic light fixtures. The T8 tube with high lumen efficacy 160lm/w can save you more money. It's the best replacement for the fluorescent lamp.

▶ Features

- > TUV/CE/ROHS approval
- > Rotatable end cap
- > Up to 60% energy savings
- > 50,000 hours life span & 5 years warranty
- > Pink color for meat

▶ CCT Single Color 3000K 4000K 5000K 6000K

▶ Function

▶ Electrical Parameters



▶ Photometric Parameters



▶ Wiring



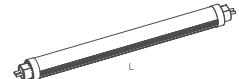
▶ Data Sheet

Order Code	Rated Power	Lumen	LM/W	Flicker Free	Dimension (mm)	GW/CTN	QTY/CTN
TU08-02S-CN1-10F01-00	10W	typ.1600	typ.160	Y	L603 X D26	7.0kg	25pcs
TU08-03S-CN1-12F01-00	12W	typ.1920	typ.160	Y	L913 X D26	12.0kg	25pcs
TU08-04S-CN1-28F01-00	28W	typ.4480	typ.160	Y	L1212 X D26	12.5kg	25pcs
TU08-04S-CN1-22F01-00	22W	typ.3520	typ.160	Y	L1212 X D26	12.5kg	25pcs
TU08-05S-CN1-22F01-00	22W	typ.3520	typ.160	Y	L1513X D26	14.2kg	25pcs
TU08-06S-CN1-30F01-00	30W	typ.4800	typ.160	Y	L1813X D26	17.2kg	25pcs



T6 LED Tube

TU06



The T6 tube is the best replacement for the T5 fluorescent lamp. It is used with office lighting and warehouse applications and can be used in both indirect and parabolic light fixtures.

▶ Features

- > TUV/CE/ROHS approval
- > Rotatable end cap
- > Special Design for G5 cap
- > Up to 60% energy savings & 50,000 hours life span
- > Pink color for meat

▶ CCT Single Color 3000K 4000K 5000K 6000K

▶ Function

▶ Electrical Parameters



▶ Photometric Parameters



▶ Wiring



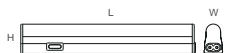
▶ Data Sheet

Order Code	Rated Power	Lumen	LM/W	Flicker Free	Dimension (mm)	GW/CTN	QTY/CTN
TU06-02S-CN1-10F01-00	10W	typ.1600	typ.160	Y	L549 X D22	12.5kg	50pcs
TU06-04S-CN1-18F01-00	18W	typ.2880	typ.160	Y	L1148 X D22	12.5kg	25pcs
TU06-05S-CN1-22F01-00	22W	typ.3520	typ.160	Y	L1449 X D22	14.5kg	25pcs
TU06-05S-CN1-25F01-00	25W	typ.4000	typ.160	Y	L1449 X D22	14.5kg	25pcs
TU06-06S-CN1-30F01-00	30W	typ.4800	typ.160	Y	L1749 X D22	18.9kg	25pcs



Cabinet Light

CB01



Cabinet lights were designed for use on cupboards, showcases, shopping malls. Full plastic case and various of connectors make the cabinet light easy multiple link and easy installation.

Features

- > Ideal for retro-fit of existing T4 and T5 fixtures
- > Full set of connectors and accessories supplied
- > Slimline profile for discreet installation
- > Extruded plastic body
- > 3 years warranty

Data Sheet

Order Code	Rated Power	Lumen	LMW	Flicker Free	Dimension (mm)	GW/CTN	QTY/CTN
CB01-02W-GN1-03F01-00	3W	typ.300	typ.100	N	L200 X W23 X H37	15kg	60pcs
CB01-03W-GN1-05F01-00	5W	typ.500	typ.100	N	L300 X W23 X H37	17kg	60pcs
CB01-05W-GN1-08F01-00	8W	typ.800	typ.100	N	L500 X W23 X H37	10kg	30pcs
CB01-09W-GN1-14F01-00	14W	typ.1400	typ.100	N	L900 X W23 X H37	13kg	30pcs
CB01-12W-GN1-16F01-00	16W	typ.1600	typ.100	N	L1200 X W23 X H37	16kg	30pcs

▶ CCT Single Color 3000K 4000K 5000K 6000K

▶ Function

▶ Electrical Parameters



▶ Photometric Parameters

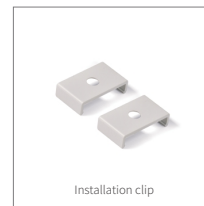


▶ Connector Accessories See below page



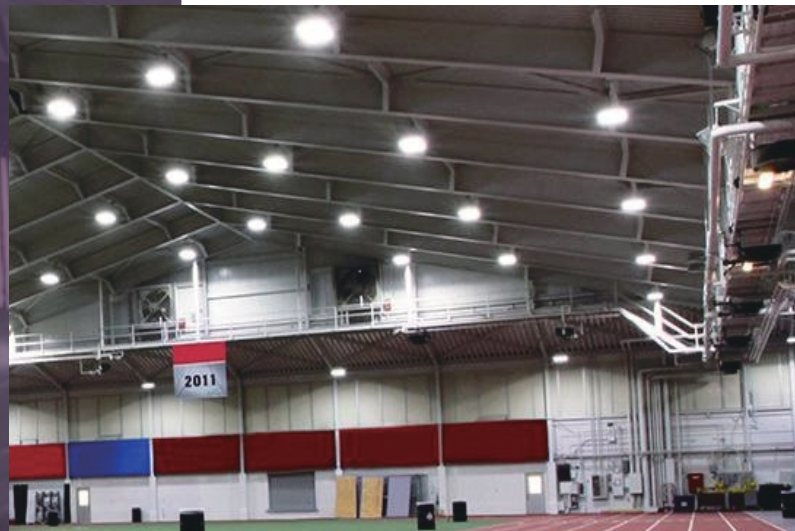
Cabinet Light

Accessories



UFO Highbay

- >Toppo UFO Highbay Series offers a wide range of functionality, new innovative features and a modern and uniform design across the whole range.
- >The heatsink was designed for excellent heat dissipation as well as a modern appearance, while still being cost effective. All members of this series come with a competitive price and with 5 years warranty.
- >This Highbay series is available with 140lm/w, 160lm/w and 190lm/w system efficiency, different drivers and different optical features as well as various accessories like motion and daylight sensors and different mounting options.



Categories



REVO UFO
HB100



Elite UFO
HB200



Mate UFO
HB400



Mate UFO
HB420

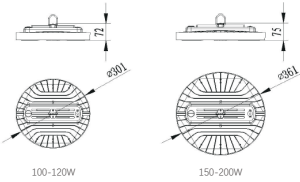


Mate UFO
HB430



REVO UFO

HB100



With built-in driver, REVO-UFO is a cost-effective and compact high bay series. Dia.361mm heat sink guarantees good heat dissipation. All of the above features make this UFO were widely use on different industrial applications

▶ Features

- > 130lm/w and 160lm/w
- > Full wattage:100W, 120W, 150W, 200W.
- > Intelligent control: microwave motion sensor, PIR sensor, CASAMBI wireless control

▶ Data Sheet

Order Code	Rated Power	Lumen	LMW	Flicker Free	Dimension (mm)	GW/CTN	QTY/CTN
HB100-30B-DNI-1AFO1-00	100W	typ.13000	typ.130	Y	D301 X H72	12kg	4pcs
HB100-30B-DNI-1BF01-00	120W	typ.15600	typ.130	Y	D301 X H72	12kg	4pcs
HB100-36B-DNI-1BF01-00	150W	typ.19500	typ.130	Y	D361 X H75	14kg	4pcs
HB100-36B-DNI-2AFO1-00	200W	typ.26000	typ.130	Y	D361 X H75	14kg	4pcs



- ▶ CCT Single Color 3000K 4000K 5000K 6000K
- ▶ Function
- ▶ Electrical Parameters
- ▶ Photometric Parameters
- ▶ IP/IK
- ▶ Installation



▶ Mounting Options



▶ Sensor Function



INTRODUCTION

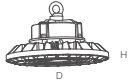
The ANT-5-4R is a motion sensor that dims lighting from high to low based on movement. This slim, low-profile sensor is designed for installation inside the bottom of a light fixture body.

The sensors use microwave sensing technology that reacts to changes in movement within the coverage area. Once the sensor stops detecting movement and the time delay elapses lights will go from high to low mode and eventually to an OFF position if it is desired. Sensors must directly "see" motion of a person or moving object to detect them, so careful consideration must be given to sensor luminaire placement and lens selection. Avoid placing the sensor where obstructions may block the sensor's line of sight.



Elite UFO

HB200



Elite UFO is a new functional highbay light. Can use DIP switch wattage adjustable driver. Available on IP65 connector which make the Elite UFO easy for driver replace and AC wiring.

UP to 190 LM/W makes the Elite UFO deliver the reliable lumen output and lower light decay.

► Features

- > Up to 190lm/W and die-cast case as heat sink
- > Wattage DIP switch adjustable (60%/80%/100%) & Stepless adjustable are available
- > Ripple Lens : 60°/ 90°/ 120°
- > Plug & Play sensor for MS /on/off/1-10V changing is available
- > Optional on IP65 connector for smart driver replace AC wiring
- > D-Mark tested for using on paper /wooden production
- > 5 years warranty

► Data Sheet

Order Code	Rated Power	Wattage Adjustable	Lumen	LM/W	Flicker Free	Dimension (mm)	GW/CTN	QTY/CTN
HB200-24B-DN1-75F01-00	75W	45W/60W/75W	Max.14250	typ.190	Y	D240X H155	3.5kg	1pcs
HB200-24B-DN1-1AFD01-00	100W	60W/80W/100W	Max.19000	typ.190	Y	D240X H155	3.5kg	1pcs
HB200-28B-DN1-1BF01-00	150W	90W/120W/150W	Max.28500	typ.190	Y	D280X H163	4.5kg	1pcs
HB200-32B-DN1-2AF01-00	200W	120W/160W/200W	Max.38000	typ.190	Y	D320X H163	5.3kg	1pcs



- CCT
 - Single Color
 - Tri-color
- Function
 - Dim. DIP
 - MS
 - DALI
 - MS
 - MS
 - MS
- Electrical Parameters
 - AC 100-277V
 - PF >0.95
 - THD <15%
 - Flicker Free
- Photometric Parameters
 - 160 LM/W
 - 190 LM/W
 - CRI>80 SDCM <5
 - LM79 TM-21
 - EPP2.0
- Beam angle
 - 60°
 - 90°
 - 120°
- IP/IK
 - IP65
 - IK10
- Installation
 - Loop Hanging
 - Hook Mounting
 - Chasing Mounting
 - Bracket Mounting

Elite UFO Function Options



DIP Switch Wattage Adjustable
Stepless Wattage Adjustable



Smart IP65 Conny Connector,
easy to access to wiring to ensure
a quick and easy installation.

Smart IP65 Connector,
easy for driver replacement

Unique Die-casting
Fins heat sink



Plug in & Play MS Sensor, easy
to change from MS to 1-10V.

Ripple Lens PC Reflector:
60°/ 90°/ 120°



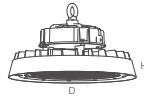
Product Video



Mate UFO Highbay



Mate UFO HB400 | Honeycomb



Honeycomb mate UFO is an anti-glare design with UGR<22. The lumen efficiency up to 160lm/W. Sleek anti glare design and die cast heat sink make the mate UFO widely use suitable on glare applications, Such as sports field, workshop, warehouse, etc.

► Features

- > Up to 160lm/w
- > Anti-glare UGR<22
- > IP65 / IK10 for all industrial applications
- > Superior honeycomb-reflector-optic with 60°or 90°
- > L80/B10 @ 50,000h
- > D-Mark tested for using on paper / wooden production
- > Warranty: 5 years

► Data Sheet

Order Code	Rated Power	Lumen	LMW	Flicker Free	Dimension (mm)	GW/CTN	QTY/CTN
HB400-30B-CN1-1AF01-00	100W	typ.16000	typ.160	Y	D300X H155	4.3kg	1pcs
HB400-30B-CN1-1BF01-00	150W	typ.24000	typ.160	Y	D300X H155	4.3kg	1pcs
HB400-35B-CN1-2AF01-00	200W	typ.32000	typ.160	Y	D350X H155	5.6kg	1pcs
HB400-35B-CN1-2BF01-00	240W	typ.38400	typ.160	Y	D350X H155	5.6kg	1pcs

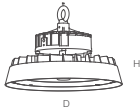
- CCT Single Color **3000K 4000K 5000K 6000K**
- Function DALI Low Glare
- Electrical Parameters AC 100-277V PF >0.95 THD <15% Flicker Free
- Photometric Parameters 140 LM/W 160 LM/W CRI>90 LM79 TM-21 ERP2.0 UGR <22
- Beam angle 60° 90°
- IP/IK IP65 IK10
- Installation Loop Hanging Hook Mounting Ceiling Mounting Bracket Mounting

UFO Highbay



Mate UFO

HB420 | Ripple Lens



Ripple lens mate UFO provide 60°/90°/120° beam angle, High lumen output up to 180LM/W.

The different beam angle deliver the high Lux output, And the die-cast heat sink helps on the heating dissipation.

All of the above features make this UFO were widely use on different industrial applications

▶ Features

- > Up to 180lm/w
- > IP65 / IK10
- > Ripple lens optic with 60°/90°/120° beam angle;
- > D-Mark tested for the using on paper/wooden production
- > 5 years warranty

▶ Data Sheet

Order Code	Rated Power	Lumen	LM/W	Flicker Free	Dimension (mm)	GW/CTN	QTY/CTN
HB420-30B-LN1-1AF01-00	100W	typ.18000	typ.180	Y	D300X H155	4.3kg	1pcs
HB420-30B-LN1-1BF01-00	150W	typ.27000	typ.180	Y	D300X H155	4.3kg	1pcs
HB420-35B-LN1-2AF01-00	200W	typ.36000	typ.180	Y	D350X H155	5.6kg	1pcs
HB420-35B-LN1-2BF01-00	240W	typ.43200	typ.180	Y	D350X H155	5.6kg	1pcs



- ▶ CCT Single Color 3000K 4000K 5000K 6000K
- ▶ Function
- ▶ Electrical Parameters
- ▶ Photometric Parameters
- ▶ Beam angle
- ▶ IP/IK
- ▶ Installation



Mate UFO

HB430 | Glass Cover



Glass cover mate UFO has a high lighting transmission, The lumen output reach at 190LM/W, The die-cast heat sink helps on the heating dissipation.

All of the above features make this UFO were widely use on different industrial applications.

▶ Features

- > Up to 190lm/w
- > Die cast heat sink for heating dissipation
- > IP65 / IK10
- > D-Mark tested for using on paper/wooden production
- > 5 years warranty

▶ Data Sheet

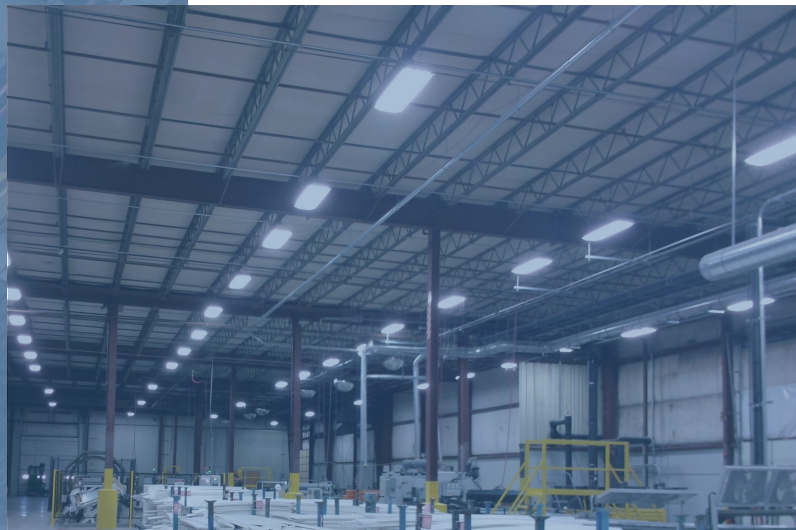
Order Code	Rated Power	Lumen	LM/W	Flicker Free	Dimension (mm)	GW/CTN	QTY/CTN
HB430-30B-LN1-1AF01-00	100W	typ.19000	typ.190	Y	D300X H155	4.3kg	1pcs
HB430-30B-LN1-1BF01-00	150W	typ.28500	typ.190	Y	D300X H155	4.3kg	1pcs
HB430-35B-LN1-2AF01-00	200W	typ.38000	typ.190	Y	D350X H155	5.6kg	1pcs
HB430-35B-LN1-2BF01-00	240W	typ.45600	typ.190	Y	D350X H155	5.6kg	1pcs



- ▶ CCT Single Color 3000K 4000K 5000K 6000K
- ▶ Function
- ▶ Electrical Parameters
- ▶ Photometric Parameters
- ▶ IP/IK
- ▶ Installation

Linear Highbay

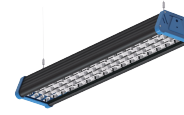
- > TP-Lux branded linear highbay series designed to offer maximum efficacy, a long lifespan, glare protection, and a wide range of features.
- > The unique and modern appearance heatsink design assures excellent heat dissipation for up to 200W and up to 180lm/w system efficacy. All of our T-line Highbays are for a minimum of 5 years warranty.
- > The special designed Honeycomb Reflectors reduces glaring and provides various symmetric and asymmetric beam angle choices for all possible areas of applications.



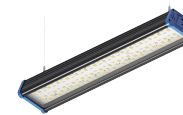
Categories



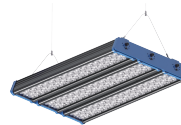
T-line
HB500



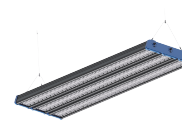
T-line
HB520



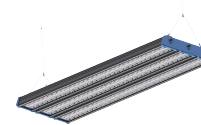
T-line
HB540



Modular Highbay
HB600 | 3x100W- (60cm)



Modular Highbay
HB602 | 3x150W- (90cm)



Modular Highbay
HB604 | 3x200W- (120cm)



T-line Linear Highbay



T-line

HB500



The symmetric honeycomb linear highbay is designed low glare applications up to 160LM/W. The symmetric honeycomb provide 60/90 degree beam angle .

The superior honeycomb-reflector-optic for low glare make this linear highbay be widely use on the industrial and commercial applications which need the low glare lighting emitting.

► Features

- > Up to 160 lm/w
- > Die-cast case for excellent heat dissipation
- > Symmetric honeycomb for low glare
- > No UV or IR and completely mercury free
- > Various end cap colors available
- > L80/B10 @ 50,000h
- > 5 years warranty

► Data Sheet

Order Code	Rated Power	Lumen	LM/W	Flicker Free	Dimension (mm)	GW/CTN	QTY/CTN
HB500-02B-CN1-1AF01-00	100W	typ.16000	typ.160	Y	L623 X W138 X H73	5.9kg	1pcs
HB500-03B-CN1-1CF01-00	120W	typ.19200	typ.160	Y	L923 X W138 X H73	7.9kg	1pcs
HB500-03B-CN1-1BF01-00	150W	typ.24000	typ.160	Y	L923 X W138 X H73	7.9kg	1pcs
HB500-04B-CN1-2AF01-00	200W	typ.32000	typ.160	Y	L1223 X W138 X H73	10.0kg	1pcs

► CCT



► Function



► Electrical Parameters



► Photometric Parameters



► Beam angle



► IP/IK





T-line

HB520



The asymmetric honeycomb linear highbay provide the 60x110 and 90x110 degree beamangle. The asymmetric angle make the highbay deliver a uniform lighting up to 160LM/W

The asymmetric honeycomb reflector also make the linear highbay UGR<22 low glare.

Features

- > Up to 160 lm/w
- > Die-cast case for excellent heat dissipation
- > Asymmetric honeycomb for low glare UGR<22
- > No UV or IR and completely mercury free
- > Various end cap colors available
- > L80/B10 @ 50,000h
- > 5 years warranty

Data Sheet

Order Code	Rated Power	Lumen	LM/W	Flicker Free	Dimension (mm)	GW/CTN	QTY/CTN
HB520-02B-CN1-1AF01-00	100W	typ.16000	typ.160	Y	L623 X W138 X H73	5.9kg	1pcs
HB520-03B-CN1-1CF01-00	120W	typ.19200	typ.160	Y	L923 X W138 X H73	7.9kg	1pcs
HB520-03B-CN1-1BF01-00	150W	typ.24000	typ.160	Y	L923 X W138 X H73	7.9kg	1pcs
HB520-04B-CN1-2AF01-00	200W	typ.32000	typ.160	Y	L1223 X W138 X H73	10.0kg	1pcs



T-line

HB540



The glass cover linear highbay provide frosted and clear version up to 180 LM/W

The cooling fins aluminum case assures the excellent heating dissipation.

Features

- > Frosted :170LM/W, Clear :180LM/W
- > Die-cast case for excellent heat dissipation
- > No UV or IR and completely mercury free
- > Various end cap colors available
- > L80/B10 @ 50,000h
- > 5 years warranty

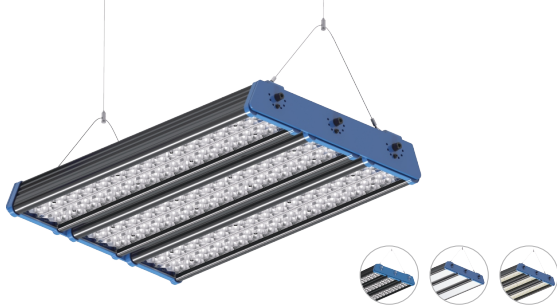
Data Sheet

Order Code	Rated Power	Lumen	LM/W	Flicker Free	Dimension (mm)	GW/CTN	QTY/CTN
HB540-02B-CN1-1AF01-00	100W	typ.17000	typ.170	Y	L623 X W138 X H73	5.9kg	1pcs
HB540-03B-CN1-1CF01-00	120W	typ.20400	typ.170	Y	L923 X W138 X H73	7.9kg	1pcs
HB540-03B-CN1-1BF01-00	150W	typ.25500	typ.170	Y	L923 X W138 X H73	7.9kg	1pcs
HB540-04B-CN1-2AF01-00	200W	typ.34000	typ.170	Y	L1223 X W138 X H73	10.0kg	1pcs



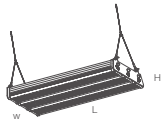
Modular Highbay

- > TP-Lux branded modular highbay is a custom-made dimension highbay which use the 60CM / 90CM / 120CM T-Line unit as the basic unit .
- >The symmetric, Asymmetric,Glass cover offer the different lighting emitting for the modular highbay on different beam angle .
- > The own design aluminum heat sink deliver the best heating dissipation for modular highbay which make the highbay offer a long life span and lower light decay
- > The special designed Honeycomb Reflectors reduces glaring and provides various symmetric and asymmetric beam angle choices for all possible areas of applications.



Modular Highbay

HB600 | 3x100W-60CM



Modular highbay use the 60CM / 90CM / 120CM T-Line unit as the basic unit. Aluminum heat sink deliver the best heating dissipation which make the highbay offer a long life span and lower light decay

The special designed Honeycomb reflectors reduces glaring and provides various symmetric and asymmetric beam angle choices for all possible areas of applications.

► Features

- > Superior honeycomb-reflector-optic for low glare
- > Asymmetric Honeycomb reflector for 60°/90° degree
- > Glass cover up to 180 lm/w
- > Cooling-finings structure for excellent heat dissipation
- > L80/B10 @ 50,000h
- > 5 years warranty

► Data Sheet

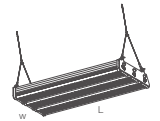
Order Code	Rated Power	Lumen	LM/W	Flicker Free	Dimension (mm)	GW/CTN	QTY/CTN
HB600-02B-CN1-3AF01-00	300W	typ.48000	typ.160	Y	L624 X W438 X H83	15.6kg	1pcs
HB601-02B-CN1-3AF01-00	300W	typ.48000	typ.160	Y	L624 X W438 X H83	15.6kg	1pcs
HB620-02B-CN1-3AF01-00	300W	typ.51000	typ.170	Y	L624 X W438 X H83	15.6kg	1pcs
HB621-02B-CN1-3AF01-00	300W	typ.54000	typ.180	Y	L624 X W438 X H83	15.6kg	1pcs

- CCT
 - Single Color
 - Tri-color
- Function
 - Dim. 0-10V
 - 0-10V
 - DALI
 - 0-10V
 - 0-10V
 - 0-10V
- Electrical Parameters
 - AC 100-277V
 - PF >0.95
 - THD <15%
 - Flicker Free
- Photometric Parameters
 - 180 LM/W
 - 180 LM/W
 - 180 LM/W
 - GR-B0 SDCM <5
 - LM79 TM-21
 - ERP2.0
- Cover
 - Symmetric honeycomb
 - Asymmetric honeycomb
 - Glass cover
- Beam angle
 - 60°
 - 90°
 - 120°
 - 150°
 - 180°
- IP/IK
 - IP65
 - IK10



Modular Highbay

HB602 | 3x150W-90CM



Modular highbay use the 60CM / 90CM / 120CM T-Line unit as the basic unit. Aluminum heat sink deliver the best heating dissipation which make the highbay offer a long life span and lower light decay

The special designed Honeycomb reflectors reduces glaring and provides various symmetric and asymmetric beam angle choices for all possible areas of applications.

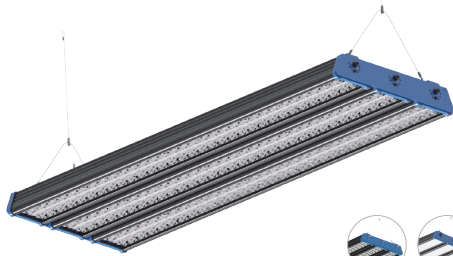
► Features

- > Superior honeycomb-reflector-optic for low glare
- > Asymmetric Honeycomb reflector for 60°/90° degree
- > Glass cover up to 180 lm/w
- > Cooling-finings structure for excellent heat dissipation
- > L80/B10 @ 50,000h
- > 5 years warranty

► Data Sheet

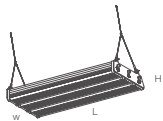
Order Code	Rated Power	Lumen	LM/W	Flicker Free	Dimension (mm)	GW/CTN	QTY/CTN
HB602-03B-CN1-1BF01-00	450W	typ.72000	typ.160	Y	L924 X W438 X H83	19.5kg	1pcs
HB603-03B-CN1-1BF01-00	450W	typ.72000	typ.160	Y	L924 X W438 X H83	19.5kg	1pcs
HB623-03B-CN1-1BF01-00	450W	typ.76500	typ.170	Y	L924 X W438 X H83	19.5kg	1pcs
HB624-03B-CN1-1BF01-00	450W	typ.81000	typ.180	Y	L924 X W438 X H83	19.5kg	1pcs

- CCT
 - Single Color
 - Tri-color
- Function
 - Dim. 0-10V
 - 0-10V
 - DALI
 - 0-10V
 - 0-10V
 - 0-10V
- Electrical Parameters
 - AC 100-277V
 - PF >0.95
 - THD <15%
 - Flicker Free
- Photometric Parameters
 - 180 LM/W
 - 180 LM/W
 - 180 LM/W
 - GR-B0 SDCM <5
 - LM79 TM-21
 - ERP2.0
- Cover
 - Symmetric honeycomb
 - Asymmetric honeycomb
 - Glass cover
- Beam angle
 - 60°
 - 90°
 - 120°
 - 150°
 - 180°
- IP/IK
 - IP65
 - IK10



Modular Highbay

HB604 | 3x200W-120CM



Modular highbay use the 60CM / 90CM / 120CM T-Line unit as the basic unit. Aluminum heat sink deliver the best heating dissipation which make the highbay offer a long life span and lower light decay

The special designed Honeycomb reflectors reduces glaring and provides various symmetric and asymmetric beam angle choices for all possible areas of applications.

Features

- > Superior honeycomb-reflector-optic for low glare
- > Asymmetric Honeycomb reflector for 60°/90° degree
- > Glass cover up to 180 lm/w
- > Cooling-finsings structure for excellent heat dissipation > L80/B10 @ 50,000h
- > 5 years warranty

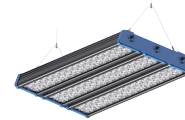
Data Sheet

Order Code	Rated Power	Lumen	LMW	Flicker Free	Dimension (mm)	GW/CTN	QTY/CTN
HB604-04B-CN1-1BF01-00	600W	typ.96000	typ.160	Y	L1224 X W438 X H83	25.2kg	1pcs
HB605-04B-CN1-1BF01-00	600W	typ.96000	typ.160	Y	L1224 X W438 X H83	25.2kg	1pcs
HB625-04B-CN1-1BF01-00	600W	typ.102000	typ.170	Y	L1224 X W438 X H83	25.2kg	1pcs
HB626-04B-CN1-1BF01-00	600W	typ.108000	typ.180	Y	L1224 X W438 X H83	25.2kg	1pcs

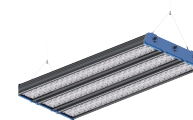


- ▶ CCT: Single Color, Tri-color
- ▶ Function: DALI, Zigbee, Bluetooth, etc.
- ▶ Electrical Parameters: AC 160-277V, PF >0.95, THD <15%, Flicker Free
- ▶ Photometric Parameters: 140 LMW, 180 LMW, 180 LMW, CRI>90, SDCM <5, LM79 TM-21, EPP2.0
- ▶ Cover: Symmetric honeycomb, Asymmetric honeycomb, Glass cover
- ▶ Beam angle: 60°, 90°, 60°x110°, 90°x110°, 120°, Glass
- ▶ IP/IK: IP65, IK10

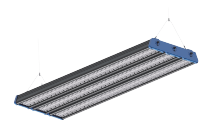
Modular Highbay product categories



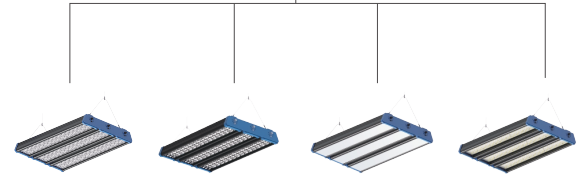
Modular Linear Highbay
3X60CM



Modular Linear Highbay
3X90CM



Modular Linear Highbay
3X120CM



Symmetric Honeycomb 60°/90°
Asymmetric Honeycomb 60°x110°
90°x110°
Frosted Glass Cover 120°
Glass Cover 120°

LED Technical Glossary

Ampere (Amp)- The unit for measuring rate of flow of electrical current: Current(Amps)= Power(Watts)/Voltage(Volts)

1-10V Analogue dimming- Local dimming option for LED luminaires. Requires a dimming pair of cables to be run to each driver in the circuit

Beam Angle- The spread of light from a luminaire. For example: a fitting such as a low bay, which is closer to the floor, will have a wider beam angle to illuminate a given floor area while a high bay fitting will have a narrower beam

Brightness- Often used incorrectly with respect to illumination as a synonym for luminous flux. An objective measurement of the visible power of a light source. The term is correctly used when describing screen brightness in a display or television

Colour Rendering Index(CRI)-A measure of the degree of colour shift objects undergo when illuminated by the light source as compared with those same objects when illuminated by a reference source of comparable colour temperature. The reference source has a CRI of 100

Colour temperature - The description used to describe the effect of heating an object until it glows incandescently. The emitted radiation, and apparent colour, changes proportional to the temperature, easily envisioned when considering hot metal in a forge that glows red, then orange, and then white as the temperature increases

Day lighting harvesting- Dimming of luminaire output to take advantage of available natural light and reduce energy consumption

Delivered Light - The amount of light a lighting fixture or lighting installation delivers to a target area or task surface, measured in footcandles (fc)or lux(lx)

Diffuser - An object with irregularities on a surface causing scattered light diffusion

Digital Addressable Lighting Interface (DALI)- a digital communications protocol for controlling and dimming lighting fixtures, originally developed in Europe

Dual Wattage - Option to select the power output of the driver

Efficacy- The light output of a light source divided by the total electrical power input to that source, expressed in lumens per watt(lm/W)

Electrical class 1/2/3 - Electrical protection classes are used to differentiate between the protective-earth connection requirements of devices. The level of protection ranges from: Class 1 being the lowest protection and class 3 being the highest protection

Fire Rating categories:

VO - Burning stops within 10 seconds on vertical specimen; drips of particles allowed as long as they are not inflamed

V2-Burning stops within 30 seconds on vertical specimen; drip of particles allowed as long as they are not inflamed

HB- Slow burning on a horizontal specimen burning rate <76mm/ min thickness <3mm or burning stops before 100mm

TP(B)-Slow burning rate <50mm/min for thickness <3mm

TP(A)-Self extinguishes and flaming and afterglow should not exceed 5 seconds once source the source of flame is removed

Flux/Luminous Flux- Luminous flux is the measure of the perceived power of light produced by the LED adjusted to reflect the varying sensitivity of the human eye to different wavelengths of light

Forward voltage - LEDs are current driven devices. If an external current is passed through the device, a forward voltage will be developed across the diode

Hazardous Zone 1&2- Are defined as places where fire or explosion hazards may exist due to flammable gases, flammable liquid-produced vapours, combustible liquid produced vapours, combustible dusts, or ignitable fibres/ flying present in the air in quantities sufficient to produce explosive or ignitable mixtures

Heat Sink - A part of the thermal system that conducts or

conveys heat away from sensitive components, such as LEDs and electronics

High Power LED- A high power LED, sometimes referred to as a power LED, is one that is driven at a current of 350 mA or higher

ICEI-Industry Committee for Emergency Lighting

IES -A photometric data file for use with lighting design software

IK Rating- Classifies and rates the degree of protection provided against mechanical impact

Illuminance- The intensity of light falling on a surface area. If the area is measured in square feet, the unit of illuminance is footcandles (fc). If measured in square metres, the unit of illuminance is lux(lx)

Ingress Protection(IP)-Classifies and rates the degree of protection provided against Intrusion(body parts such as hands and fingers), dust, accidental contact, and water by mechanical casings and electrical enclosures

Inrush current- Inrush current is the briefly occurring high input current which flows into the electronic control gear during the initial start-up to charge the capacitors on the input side. Typically, the amplitude is much greater than the operating or steady-state current

ISO 9001- Accredited quality management system

ISO 14001- Accredited environmental management system

Kelvin Temperature- Term and symbol (K) used to indicate the comparative colour appearance of a light source when compared to a theoretical blackbody Yellowish incandescent lamps are 3000K

L70- The number of hours of use at which the lumens output is 70% of its value at installation. Eg L70 at 50,000 hours

LED Chip(Chip)- The light producing semiconductor device that may or may not be incorporated into an LED

LED Driver- An electronic circuit that converts input power into a current source- a source in which current remains constant despite fluctuations in voltage. An LED driver protects LEDs from normal voltage fluctuations overvoltages, and voltage spikes

LGP(PMMA)- A key component to maximize the uniformity of light, to make the backlight slim and to reorient the line or dot light source such as LED to the plate light source

Li-ion- Lithium-ion battery. A type of re-chargeable battery

LiFePO4- Lithium-ion rechargeable battery intended for high power applications

Light Emitting Diode (LED)- A Light Emitting Diode (LED) is a solid-state semiconductor device that converts electrical energy directly into light. At its most basic level the semiconductor is comprised of two regions. The p-region contains positive electrical charges while the n-region contains negative electrical charges. When voltage is applied and current begins to flow, the electrons move across the n region into the p region. The process of an electron moving through the p-n junction releases energy. The dispersion of this energy produces photons with visible wavelengths

Lumen(lm)- The international (SI) unit of luminous flux or quantity of light and equals the amount of light that is spread over a square foot of surface by one candle power when all parts of the surface are exactly one foot from the light source

Lumen Output- The total lumens emitted of a light source, system, or solution

Luminaire- A lighting fixture complete with installed lamps and other accessories

Luminous Efficacy- Luminous efficacy is a measure of how well a light source produces visible light expressed as Lumens/Watt

Lux(lx)- The international (SI) unit of illuminance, or luminous flux incident on a unit area, frequently defined as one lumen per square meter (lm/m²)

Maintained Efficacy- Luminaire available for general lighting and emergency lighting

NCF- Non-corrosive fitting or weather proof fitting

NiCd- Nickel-Cadmium battery. A type of re-chargeable battery
Non-Maintained- Luminaire available for emergency lighting only

Polymethylmethacrylate (PMMA)- A clear plastic material that can be used as a replacement for glass Commonly used in places where shatter-proof glass or windows are required

Power Factor- The active power divided by the apparent power (i.e. product of the rms input voltage and rms input current of a driver)

Smart Lighting- Automated Lighting Control using sensors and/or scheduling switches

SMDS- Surface-mount LEDs

Thermoplastic- A material with a relatively low softening point. Diffusers used in LED lighting products will be rate to show that they have fire retardant properties. Examples of fire ratings include TP(a), TP(b), VO and HB

Tri-Color- Option to select the the color temperature of some white light Topco Lighting products

UGR- Unified Glare Rating

Ultraviolet (UV)- Electromagnetic radiation with wavelength shorter than that of visible light

Volt- The term used to describe the electrical potential difference between oppositely charged conductors

Watt- The unit of electrical power as used by an electrical device during its operation Many lamps come with rating in watts to indicate their power consumption

ZigBee- A low-power, low data rate, local area wireless network, ideal for lighting control

IK Ratings Explained

IK Ratings are defined as a number Ik XX indicating the level of impact protection provided by the luminaire enclosure The IK Rating scale identifies the ability of an enclosure to resist impact energy levels measured in joules (J) IEC 62262 specifies how the enclosure must be mounted for testing, the atmospheric conditions required, the quantity and distribution of the test impacts and the impact hammer to be used for each level of IK rating

IK00	IK02	IK03	IK05	IK06	IK07	IK08	IK10	
Non-protected	0.2J	0.35J	0.5J	0.7J	2J	5J	10J	20J

IP Ratings Explained

IP Ratings are defined as a number IP XX indicating the level of ingress protection provided by the luminaire enclosure

IP ratings are defined as IPXX where the first X indicates the degree of protection against solid objects and the second X indicates the degrees of protection against water. A luminaire or lighting component with a rating of IP66 is dust-tight and protected against powerful water jets

Degrees of Protection Against Solid Objects

IP0X	Non-protecte
IP1X	50mm diameter and greater
IP2X	12.55mm diameter and greater
IP3X	2.5mm diameter and greater
IP4X	1.0mm diameter and greater
IP5X	Dust-protected
IP6X	Dust-tight

Degrees of Protection Against Water

IPX0	Non-protected
IPX1	Vertically falling water drops
IPX2	Vertically falling water drops with enclosure tilted
IPX3	Spraying water
IPX4	Splashing water
IPX5	Water jets
IPX6	Powerful water jets
IPX7	Temporary immersion
IPX8	Continuous immersion

